

Bilshu



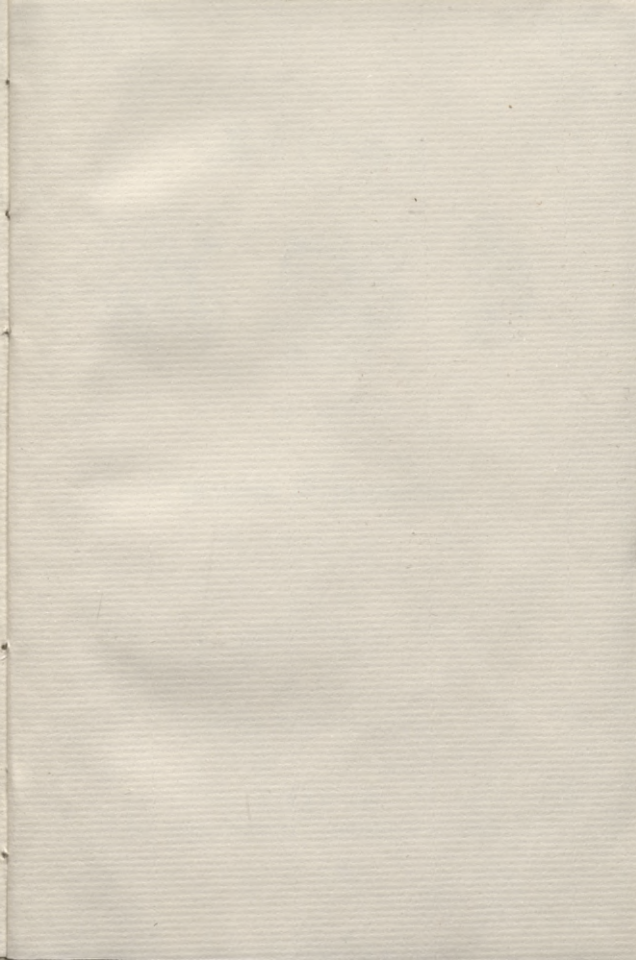
paſ. preektu

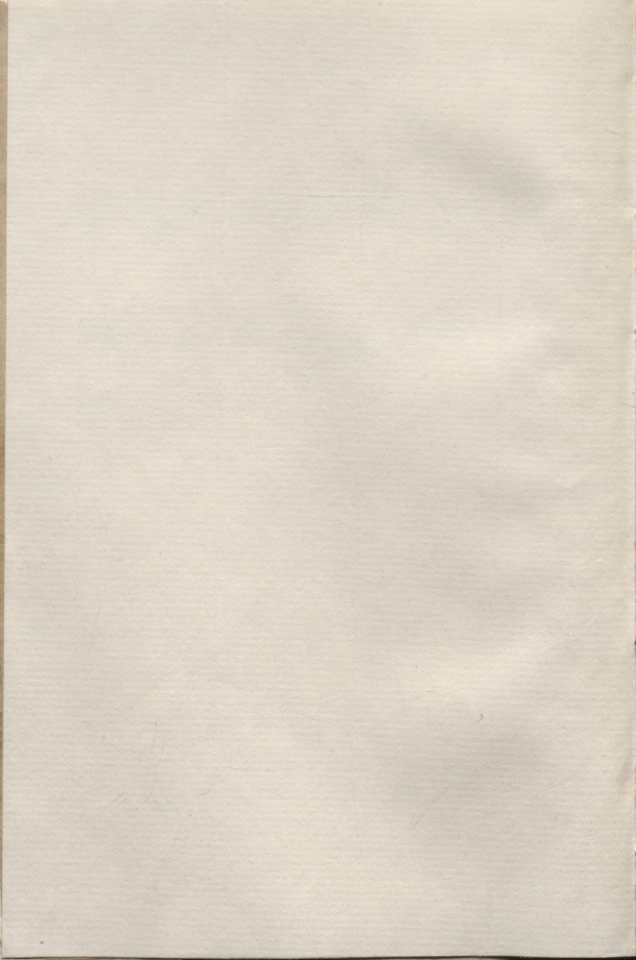
maſeem beyrninee n.

Schigramata peder

Carl Kaufherr

1845





2000-9

L 57

L
A

B i l s c h u



par. preeku

maseem Behrnineem.

(Dhtra druffa.)

Jelgawâ,
pee Jahna Wridrikka Steffenhagen un dehta.

1871.

0309106109

L. V. B.	
№	In. 328.418

р.г.б. 278 2003.7.0.
4.06.04.73

Latvijas Nacionālā
BIBLIOTĒKA

Дозволено цензурою.

Рига, 5. Апрѣля 1871 г.



Masee bohkstabi:

a b z d e f g g h i j
k l l m n n o p r r
s sch s s sch st t tsch (ds
dsch) u w.

Seelee bohkstabi:

A B z D E F G G H
I K K L L M N N O
P R R S Sch S Sch St
T Tsch (Ds Dsch) U W.

I.

i u e o a

a e i o u

ai au ee ei oi ui

a e o u i ai au ee ei ui

II.

n an en on un in aun een un
nee na ne no nu ni nau nee

o an am om um im am im in
im mee eem.

r ir or ar er ri ir ro or re
er ra ar rau rei ree eer.

w wa we wo wu we wi wau wei
wee eew.

l il ol al le lei li lu il lau
al lai li lo ol lee lui.

b bau bei bi bo ab ba eb be ob
bi bau eb ib ub ob bau bee eeb.

d di de du dau dei do de eid aud
dau dee eed.

t da ta de te do to du tu di ti
dau tau dei tei dee tee doi toi dui
tui it ut et at ot it tee eet.

f a af fa o of fo u uf fu i if fi fau
fei ef fee fui foi of uf if fu fai.

j ja ji je jau fei jai jei kau je
ji jo eej.

g ja ga je ju gu ji gi gau jau
jei gei gu ag gai aig eeg ga eg
ef og of uf ug gi fi je fe
ju gu fu ef eg eeg.

p ap pa ep pe ip pi bi op po bo
up pu bu ip pi pau bau pei pee
bee eip pi gi fi pui pai aip ni in
ro ur jau je if il im in di du wu.

z iz zi uz zu ez ze zau auz eiz zei zi
zo uz zee eez ze ez nu un me em ar
ra wei dau ed ta it ul li aub bei
pu bu fa ga ja ji gi fi ap pa bo
iz zau aiz zai eez zee uiz.

f s fa fe fi as is us aus eis fa za es
ez es ees zau sau soi zei fei is si so
us is iz ib ir ri si wi fi li il if
un ur us su zu no bo ob go ja
sau aus eef ois ais uif.

f wo fo we fe wu fu wei fei eif auf
fau if fi uf fi ef fe fei eif fau wa

sch sch

ſcha, ſche, ſchahm, ſchis, ſchee, ſcho, ſchaut,
ſchaurſ, ſchfelt, ſchaut, ſchilbt, ſchags.

ſt tſch

nahrſt, lihſt, ſwihſt, kohſt, puhſt, ſtahw, ſtenn,
ſtumj, tſchabb, tſchuhkſt, tſchauhſt, tſchumm.

df dſch

dfenn, dfell, dferr, dſimſt, dſeſtrs, dſeeſt,
mudſch, da dſchi, wa dſchi.

ts = dſ = z

pats, welts, zeets, auts, ſchauts, leets, fiſts,
dads, naidſ.

III.

S = ſ Sa mu elſ, Sa la mans, Seh we le,
Sih tarſ, Sih rakſ.

S = f Sig gul de, Sih mans, Sih polſ,
Sah rumſ.

R = n Rau da, Rih gartſ, Rih tau re,
Ro uſ.

M = m Meh neſſ, Mil fiſ, Mad de,
Mah re, Mut te.

R = r Rit tenſ, Rut fiſ, Rib ba, Rei niſ.

W = w Wil lumſ, Wilkſ, Wih gantſ,
Wehr fiſ, Wih toſ.

ba fa fai fau fee fei foi fui ib iw
uf ub uf fe ef we iw bi be.

ni wi di an ab fa ra fa es el lo
ru um ir ap be ge auz ze se ne wo
ra auf wei je zi ab ag fi fi ad de.

h hi he hu hau ha hei hi ha fei
gei hai ro hoi hui so or su ru
ir ri fi wi sa ja ga so wo.

I n f g r f

la af ef le if li lo lu uf lau lee an
un na nau nee en on no af if fee fi
lau uf eef lui ge gau gu ra ar rau ri
ir ur ru fa af fau fe if fi fui auf.

â ê î ô û

af kâ, lau kâ, juh râ, nag gâ, fat lâ,
nah wê, up pê, au sê, sem mê, puſ kê,
pih lê, muh rî, wid dû, doh bê, zee môs,
rih jâ, loh fôs, lau fôs.

ai au ee ei oi ui

tai, lai, wai, augſ, tee, woi, eet, nau, mui,
mee, mai, rei, rai, ais, fau, fee, pai, pui,
dau, gau, fau, fai, lau.

T = t Ti tus, Teh winſch, Tih ters,
Tah lumſ.

S = j Tſh kabſ, Tſh ſepſ, Tſht neekſ,
Tſe juſ, Tſa i ruſ.

P = p Peh ters, Pils kungs, Pih le,
Put niſ, Pih rags.

Z = z Zil wekſ, Zih ruls, Zelms, Zit rohnſ,

G = g Galds, Gohds, Grahſ.

G = g Ged derts, Geſ kis, Gih miſ.

D = d Dah wiſ, Did ri kiſ, Dee naſts.

F = f Firſts, Fa mih li ja, Frid ri kiſ.

Sch = ſch Schags, Schihds, Schur ka.

Sch = ſch Schkel miſ, Schkuh tes.

L = l Lee pa, Lagſ da, Lih ba.

L = l Lip pa.

B = b Bur fans, Pehr tuls, Ber nards.

K = k Kahr te, Kahr liſ, Kup riſ.

K = k Kil das, Keſ bers, Ke ſa.

H = h Her mans, Hu go.

O = o Oh la, Ohr mans, Oh ſols.

A = a Ah dams, Ah bols, Ah ronſ.

U = u Uh traps, Un dups, Ul riſ.

E = e Eh ſels, Er neſts, Ee wa.

I = i Ih ſakſ, Ih lenſ, Ir be.

N

a



No awota teff uhdentinsch.

B

b



Us basnizu eet nabbadsinsch.

3

3



Pa zekku reisneeks steidsahs eet.

D

D



Skatt' dahrsneeks taisahs pukkes leet.

6

8

THE UNIVERSITY OF CHICAGO

10

12

THE UNIVERSITY OF CHICAGO

G

e



Gefsch aplohka sweeds ehrelis.

F

i



Ur flinti jakte gehgeris.

G

g



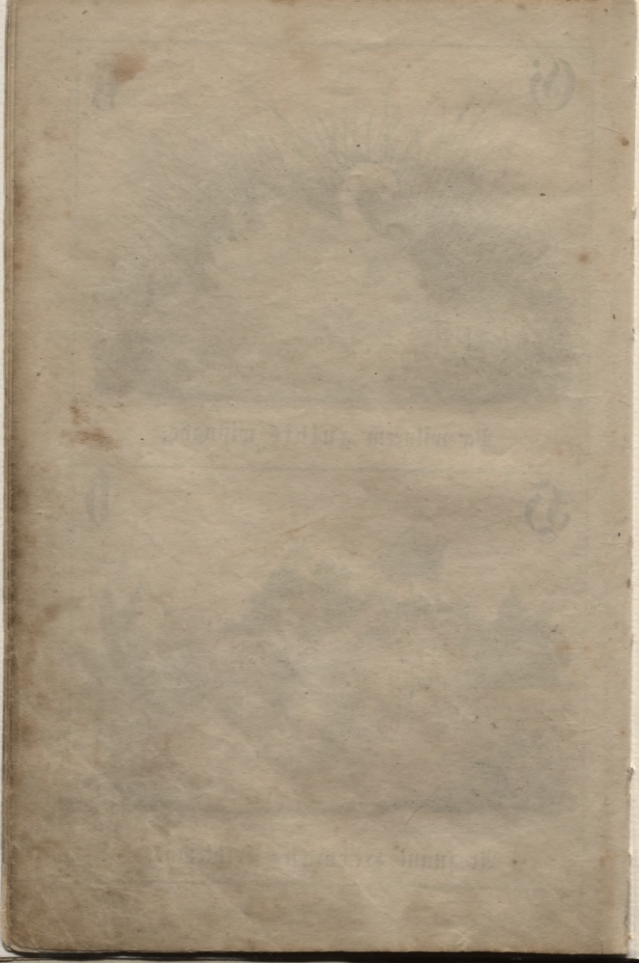
Pa wilneem gulbis wišinahs.

S

h



Ar funni Hermanš spehlejahs.



S

i



Ar iskapti wihrs wahu greesch.

R

f



To farrogu sehns gaisâ sweesch.

Q



I

La lagsdigalla jauki dseed.

M



III

Woi redsi maggones fur seed.

I

2

1840

III

1840

1840

11

30



THE GREAT EASTERN

11

30



THE GREAT EASTERN

R

II



Ar nau du kuptscho kohymannis.

D

D



Pee ohfola fehsh wezzitis.

B

p



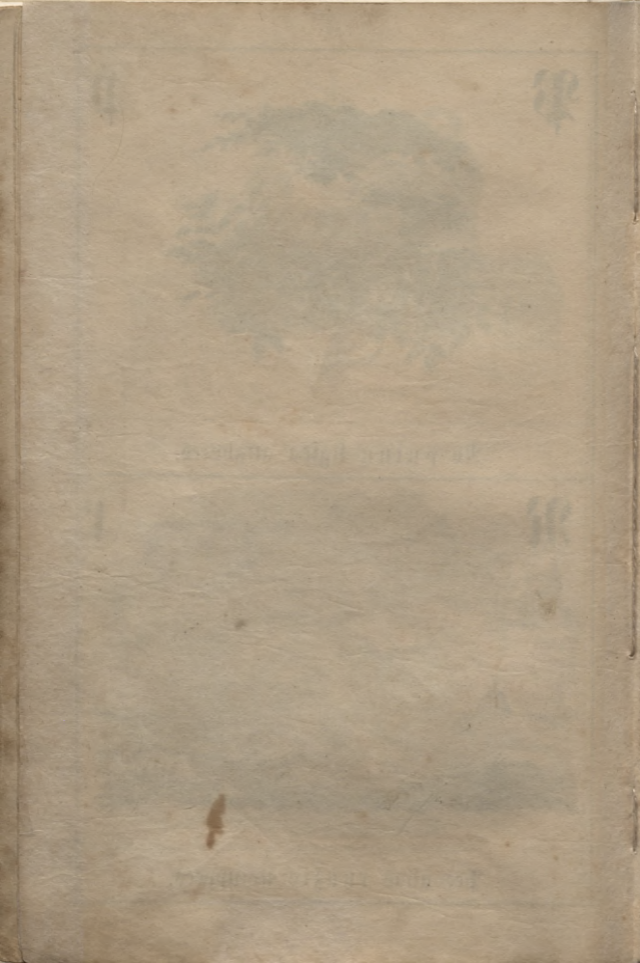
No putnu ligſda affahpees.

R

r



Pee allas runzis notuppees.



S

f



Ar tibflu fweijneeks fivis ferr.

Sch

sch



Dit lehnus fohlus schihdinsch sperr.

S

f



Us fudmallahm eet melderis.

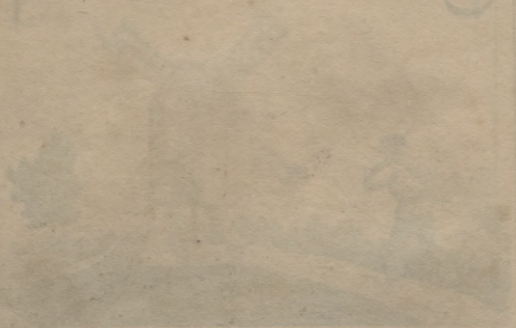
Sch

fch

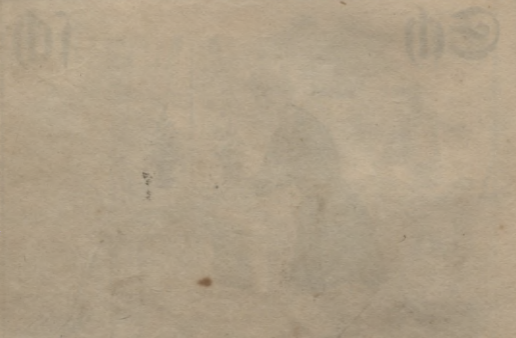


Ur fchkehrehm strahda ftrahderis.

10



The first part of the document is



of the document is the following



It plehfigs swehrs irr tihgeris.



Us firga tschiggans usfabpis.

U

U



Zaur eeleiju tell uppite.

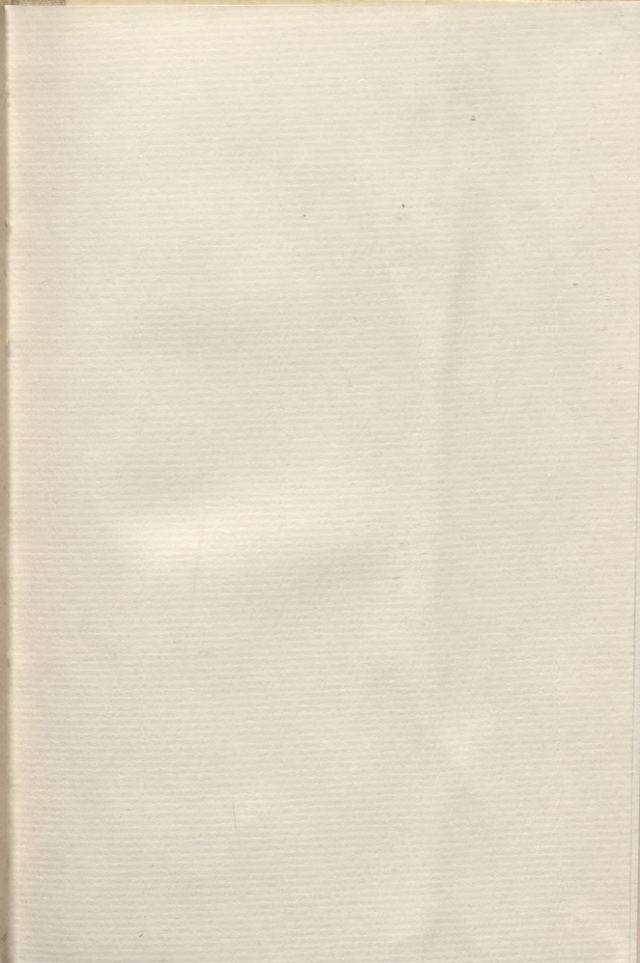
W

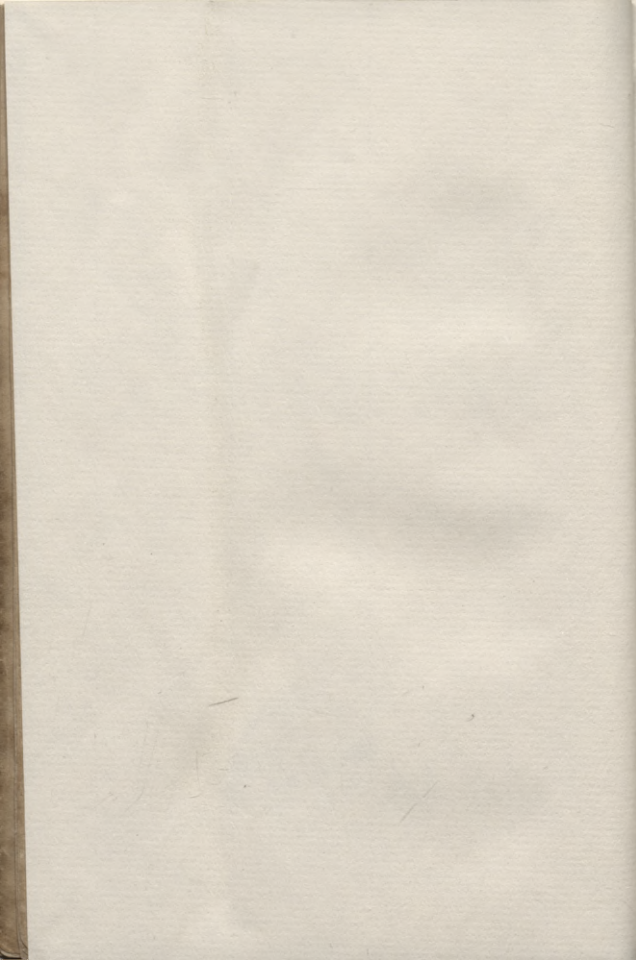
W



Þee wehrkula fehsch meitene.







LATVIJAS NACIONĀLĀ BIBLIOTĒKA



0309106109

2000-9

57

Pee J. B. Steffenhagen un dehta Jelgawā warr
Dabbuht:

Jelgawā

Bilšu-lappas.

Melnās un ar pehrwehm iēpuschkotās.

Aluhsu Tehws debbesis.

Bilde ar pehrwehm iēpuschkota.

Kafsa 50 lap.

Drifte ar pee J. B. Steffenhagen un dehta Jelgawā