

Lerungbna

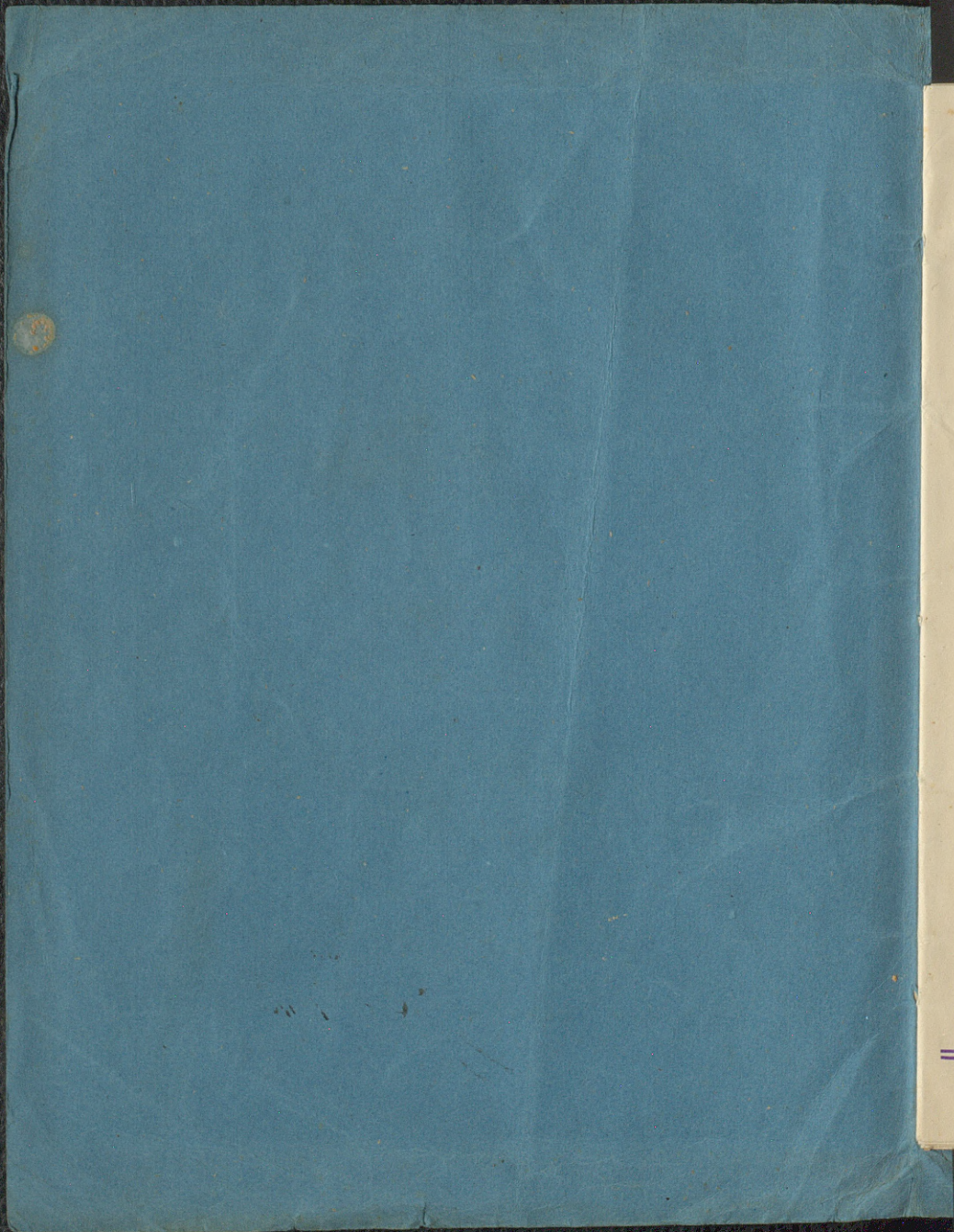
Mubfa

laira-nilwers.

III.

T a m a n .

Kaudsicht.



*Muhfulaira-zitwers*

---

*1839 - 1840.*

---

*Kandjild*

*27 Sept 1868.*

LATVIJAS SKOLOTA  
SAVIENIBAS

MUZEJS

*12/1218*

*No?*

RVLM  
6908

# Taman.

Taman - in parte fluitans pilosissima,  
nec uiffatim Pinacoides fulminatus pilosissimus.  
Es tunc ten teno renouuuntur tunc, bet tunc laht  
wintti wehl manni quibbija nos licti in aht. —  
Es abtraugetur an proffleem wahgiffleem  
wehla nakte. Tubnmannis apstunioja no  
gumna fchus finguo pte weenigis, tui pilosiffleht  
buhelancis mubna machja, wat uiteem, num  
na fluitus netuhtu no pilosifflehtas wat uiteem.  
— Warts faldat, nun fch bij mella's juhr  
nas nafans, eos finis puluflena fup pte,  
eentee fchis it na pa meegam, anglicheu  
balfi, na' tur naku? — Tad is nakt, e warts  
meiffens un defmitneens. Es wintam  
peemelolejokis, na' es efme affixens, brau,  
dam' uotipa uarnif, hant' us Kaunafja's  
not' beff'as fangacamebr' kanno pulkeem

un fahku pagetnelet nohrlela. Desmit  
neens muris nu fahku wadacht pa pilo  
sehtas celatim. Teenundas matijas pree  
braurechim - jau copemita. Bij sehti fallö  
läins; un es ne bije trahs nantis gutlijis, us  
tahdu wifse es bije glufchi no mokrilitö, un  
fahku awwinne bohrtes. Wedd man  
ni nuu wefdans, tu nastawincus! soaip  
pascha wella, bet wedd manni ton pree  
nantis matijas! uleijes. „Wedd insucus  
nohrlets, „at bildeja desmitneens, paunnefi  
naffidans; ten las buks juhsu gahdibaine  
palihnamö: tun miht netihra! Ne  
fa paschans ad no glufchi winhra pchdi  
ge wahtidifimjahö, es linu winhran  
cet preepcha, un pchitgao malolifcha,  
natis padublainatim fchucturfeelatim,  
nannam paabbam pufferi bij neffamas  
tin ween wexras sehtas, mehs nonlijatim  
pree netelas behdinas us pascha jichnas  
renafte.

— Tilis mehmis uppsikotje manna  
jauna ofitwanta neenu jurntu un  
bahlas seenas; pougalmä, nunsch bij

aplaifchets an fleppu faktes feltu, flakua  
ja juu gannif fogatfiefetes olitna buhwa,  
mafaka un weggara parohtru. Futenas  
nnafts no paftham wirpna<sup>3</sup> fennalm, ee  
flepsi, un teelalm gnawalm, noloudehs  
us jekna, nunna<sup>3</sup> tumfch fellu iwilmi orub-  
nigi nutredamid aufjaki<sup>3</sup> pce nnafta. —

Mekes letni luhrajaki<sup>3</sup> us <sup>me</sup>neerigu, bot  
tonnehn wirpnam padewigu teeloudehs  
nnahtjuma, un pce wirpna fpiritoluma us  
wanaju isfchaint, riewus, tahtlu no nnafta  
jekna flakua amus nuggus, nunna nnafti  
an fauabmi neepabmi, isfchaltjaki<sup>3</sup> na  
femenda tehtnis, pnett bahtlu rebheswelwi.  
"Nuggi un gan offta, dohnaju ei: — nitu  
dohfchaki<sup>3</sup> us Gelenfchian."

Tecmannis felluina ummatu is pil-  
olija luhrijas nafans. Faweblyis wirpnam  
isnemt fthomadame nowahgeem un at-  
laeft fukmanni, es fakuu faunt fain-  
neera — wirpnauffu, nlanaju — nenahda  
athtilde... nas ta, par lectu? Tirdigi no  
potmufftha is libdama puina, nahdu<sup>3</sup> 14 g.  
we<sup>3</sup>

„Kun sammeneis? — Sammeneis nau.  
„Sia, woi pawiffam nau? — Pawiffam nau.  
„Kul sammeneis? — Wonna ufancljca bekula.  
„Kias ta maen cunweis utwehns? — farräjuis,  
Speneumis an nahju cunwi. Dünwöpatte  
utwehns; no bekulas man spnetli ionahne  
mit nödgäp. Es urwitka an schwel, schri-  
pu regguri un pagnefcha wipm uis pui-  
nu: ugguns apschidija diwas ballas arriis.  
Winfcha bijantli, glufchi antli jous nodas  
beis. Winfcha flahwoja munnäpneefchä  
na flabs un eisfabnu apfaatlit wipm  
gibmi.

Inchtat, es lokli ne urtiraju antem,  
anohyleem, dunnem, mehnem,  
napmainem u. x. Es efme ewelmojes,  
na weemehr in nahde fwefcha flah-  
piba ftamp xilwena abram eefch, pufsi,  
it nä deht, lokrentu truchnume arri dweh-  
feli beklu nahdas jufthanas truchis.  
Un tä eisfabnu ftwa antli gibmi ap-  
faatlit, bet nolad juht turwehlat no-  
lehmt no tahda gibma, nam nau arri?  
... Hzi eisfaatljshis uis wipm anfaqrav-



flu findi, na us' ecerneif tinno cevelnogaime  
fmaidifhana pahnfunclija pahnwignafmal.  
nahn luhpsam, unnefima pahn, wippra  
manni atgahdina ja pahnfluctuans dohnab  
pant. Man galwa nahpstanti netixni  
gas dohnas, na wipfih pahnfih nou lin  
aalis, na wipfih exleenas; pahnwetti es pahn  
lejohi fawi pahnlecinahit, na fahfihiga  
baltmanus axnim neivann ustajehit, un  
ponceufih nam tad toann darridu? Bet  
tur nenas nepalidif. — Laujruifese fma pahn  
dohle ne uolixibai...

— Woi tu esse fimmecena dehtis? pahnfijiu  
es pahncligi wippram. — Ne. — Taa tad tu  
effi? — Nabbaga bahresichts. — Bet woi  
fimmeceri an betmni inn? — Ne, bijgan  
wipprai meita, bet ta uisfunclija uisjuh  
nas an tattari. — Anahdu tattari? —  
Tad welsu wipprufim! lainam bijnim  
mas tattanis, laiweneas no fentsthas.

Es cogatijer baha: diwas latwaisim  
galas, leela nafte pahnahfnes, bijwiffab  
wipprab, wipprais mehbels. Tee fennis ne  
bijneweenas bildes — flinta fihme! Taur

isdaufilabim nachtem feilpoja juhmas welyjle;  
esiwilka no ftkomowana wafju fweres jal  
luun, usflakidjes wiffju, fahnu is unatimot  
teetas, nolim unantje fohbim un flinti,  
piftotes nolim us galda, ustannu fawahnus  
us galda) lahwas, p, kafans atnal fawies us  
obtrus lahwas, p, h, naholabim so mir.  
winfthjan fahna unatim, betes ne-  
wanneju comigt: manna p, neccaftha  
wchlowenadi grolfijaks p, uina un bal-  
tahim arzim.

Ta pagahj wiffa flunna. Mehneshat-  
tyahs) f, p, h, d, e, j, a, n, a, u, n, l, o, g, u, u, n, w, i, s, s, a  
flanni mindeja us buhdas fmijskaina  
nulla. Teepefthi par to f, p, h, s, h, o, mehneshat  
flunnsu, murna dallya buhdas us di-  
wi dallabim, f, p, h, n, u, i, l, u, a, t, i, s, n, a, h, d, a, e, l, i, n, a.  
Eo p, a, r, e, h, l, o, h, i, n, o, g, u, e, l, l, a, s, u, n, f, a, h, n, u, f, a, t, t, i, e,  
les us logu, nur to etim mannyju: at-  
nal uahis us obtru neifi nofuchija garr  
wiffju un Decus firm nur palinna.  
Tos newanneju terehet, na wiffth (ar-  
nenu xitton) buhla nofuchijis ne nnafla  
lega, to mehn wiffth an nenu xitton

newarnejapalint. Es fleigdamies uornet,  
tu fwahtnuss, apjohje fohbenn un leh-  
ni, lehm is lidu no buhdas: le es fatinnu  
atkaal anto pinne. Es dat lidu psee felitas,  
un wipfche pategi, un apochmigeem foh-  
leem pagahja mangarnam. Taduffe  
tam bij wipfche nahola nafhina, un pagnee  
fies us ohflas puffi: fahaa eet pof flaturu  
un fleispu xellim leija. Tee antineef un  
mehminuma, patandotmajus, ee-  
damo wipham pankal, na wipfche ne-  
pafuffe no mannam arxim.

Starp to metnis fatma flehpstees aie  
padebbefheem, uo jatmao paxehletis  
migla, tiino raw wippu wauja neefht  
wehja luntura fpihdunus, flaturwedama  
us tuwana nugga flehnes; psee knafta  
fpihdaja leeli puttu blatni narnus wip-  
pi dnauweja katni minnali naflihrinabt.  
Es ar leela gnubitama nolai fahamees leija  
lidu nahala gabballa pa knubneem,  
un luhk no eerau fju: antais ap flafjahis,  
pchtam pagneefehis us labbo puffi, wipfa  
gahja tin tuhwe garrukalni, na es dohma-

ju, na wimmu tuhdaal wi, lsi fagnak biko  
un wairaud; bet na liinaki, bad wirfch fche  
nereerija wis pinna nise, jolo es fapnattu  
nota xiva podo mige wirfch lai pojaki  
no amipna us aximmi, un le xaja pa  
gnawatu un dachafelm. Tehigi wirfch  
apflajaki, ill ka buktu setauj ees, ap  
jehdaki semme un noliana na flime  
lihefch fch few. Es usmamija wiipna  
lefchanas, fleh pces aidkaida xlinto flah  
na. Tehy nexia minnutehne tajni no  
ohtra pusses panahdijaki nahela bal  
ta ebna, nunna psegahja pce wala un  
noskolaki antam lihefch fch.

— Tio dohma antois? faxxija fewifch  
nas baes: — wehtna flipsri pubfch, Fanna  
lainam ne abnauns.

— Fanna wis nebaidaki no wehtnoes, at  
beldja antai. — Nigla puleen becfena,  
faxxija atial fewifchnas baes, nas io  
nahdja pitnigi wimmas behdais.

— Nigla wehl labbaai wanni passant  
gani wanto nuggem, atfammaja at  
bilde. — Bet ju wirfch noslikust? —

Taggad sahnatis n luffa xeeftana; tomelun  
mian parwocena teote by britnumis: anlais  
rumaja an mami peha mafe ncewew  
wihji; bet taggad wihji kumaja spaidi pa  
ncewifji.

— Reifna man taifribe, farrija atnal  
anlais plau nftas fiftani: Tunkane bai  
datis no wetras ne no miglas, ne wanting  
gis; us mami: wai tun ne plihafek uhdans,  
mami wis nenomahifi; — lce winnajar  
nee aini.

Soewifhna ulekre un fahna nemeni  
gi puallitec tahlumā.

— Frotu anlais muldi? farrija wisimoi:  
es nekane reefju.

Es atrimmu, xii es an puhelejtis eenau  
fihit tahlumā was buhta laiwai lishifji;  
bet nena... Fā pagabja nahotus 10 min,  
noewimeif parahedjahi ftans wihpu kal  
neem melna punkte: wihpate panah  
dijahi, te nofudda. Fā winna letiri  
us nahpdamas wihpu wins gallem, un  
ahli fancedama no winneem bedidbi  
nā, luhwojahi pce nnafta, — un ta by laiwā.

Droeftham wājag buhl tam laiwene  
nam, nunnsh eedroshkinnajēs tū breefnigā  
nantē braunt raar 12 wenslēs plōstē jēh.  
nās schawunne, un ewetwōjam ai wājagē  
buhl tai leelai, nās wimm pēetam faub  
bēnajuē. <sup>3</sup> Ta dohmajōht es an ewebbedw  
mū (baljā) findi fuatlijōhi us to matēnā  
laiwē, wippa lōledaja pa wēd, sēn nā  
piltē, un pēhtam, wehl aktrē isfōhau  
dama aiwē, nā spabmū gāijā, wippa ee  
laidēhō schlawstē amōs puttās; - es dohmē  
ja, nā wimm an ewēn tēēēēē tūō pēē  
kwaflā dōēf nās fū au fētā; - bel wippa  
weegli pēēēēēē fāhmū pēē mātās un  
uolēhē us mōfā bulwēnā nēf nā hētā.  
No wippa sōgātija nachōs rēlwēō nōnd  
dōjā ougūmā, ar willaimē talam nēf sūnē,  
wīnshk pāmētē ar nōhū - un wīsttichō  
nēhmōhō is nā hētē nō laiwōō, nunnsh  
bij tū leelē, nā es wehl lēhōf schin lūixam  
nēf nāmētē, nā wippa wehl nē bō rōgnim  
mūfē. Wīppi nēhmē us plēēēēē nāf  
tā, un dēwēhō sōhōm pā kwāflē,  
un dūhōf is fū dā nō māmātīm ar rēē.

Man waja gaja gnefles is mahji, bet  
wiffas latis fleppenas leelas padunnija man  
leelas bailes, la, na is liwano warneju sagai,  
dihl nitlu.

Man nafans, lohli britnejahis, nad  
winfle pamohides nad cenauiffa mammi  
apgehrobfchots; is winham lo tomelw ne  
isfnaidnija. Shaltjees nahdi britidi pa  
lofqu is fellu debbefi, apulahlu an doffha,  
deem padebbefcheem, is tahlu <sup>atp</sup> fimm  
mas nneftu, nurfle fleppchis na litja fthih-  
pa un beifchis an fthahwuntinti, is nunnas  
winfgalla bijnefjans bonas tohmis, es  
aisgatsju is Toragonija. nnepproftu nawar,  
na nowinpa nomebanta is luhgt lo liinu  
munnas aisneje fthanas is Gelonfthiwa.

Bet ah! nomebant is lo wna fnaid-  
ni newarnija abbiddeht. Kuggi, fthahweda-  
ni offta, bijwsi me waxto jebmideles nuz-  
gi, nunni weht pawiffam lahdtas. "Warr  
buhl pchis nahdem trim ceana hrr albraues  
fthunp transports, farrija nomebant; tadjan  
gan neffejann. Egnce fthohis atpannat is  
mahju findig, un behdigs. Dunwes mammi

fatirna nasans, an bailiga zihmi.

— Sinti jehsu gordiba, teire wipfeh man.

— Ja, bracht, Deewo firri, nad mehr nafsche  
jeeno wisbraunfame.

Dee fcheend wahrd een wipfeh wehl wairan  
fabruhracht un, peeleeres pce mun fcheun  
fheja nufe: — Siche nun labbi! Ei fcheo een  
liuxehs annachde napsuali; wipfeh irr man  
pafets flams, — pchongadd mehr an wimmu  
deeng zehmi weona rinda, nad es us wipnafar  
rij, na mehr fche apmettemees, tad wipfeh  
teire: — fche bracht nau labbi, laudis fche  
irr flenti! ... Un pafetsi, nad tas tahob  
parant! ... — weens pats wiffun flaiza, no  
tingu, pchirmaifer un pchun dier, taifau  
neifam, na fcheitan pce ta apnad ufchi  
— Bet nas? woi faim nezi anreffine  
fjis? ...

— Siod een bes jarrs cenahje wezene  
un lififan wimmu mita.

— Kadda meita? wipnai jau meitas.  
— Tad Deewo an wimmu firri, nad wip  
na bij, ja wezene ten fche fawar buh  
Ja.



Es egahju tai flabbata. Traspne bij flipni  
pauuminata, un wintna wahrijahs matte  
te, deeffan baggata pncepsh nabbageem.  
Werrere us wiffam mamatm jowita  
sharanam at beldeja, na wintna effehl xur  
ta. No lares warngju an wintna iddarnicht.  
Es pseeftah jahs psee ucla, un fsh sehdja psee  
psee xnatsh nes un unminaja uggum an shag  
goeneem. — Na antais fshenreffem farrju  
es, fahelomis wintpu psee aufa: — fanni nurtu  
nanti wafajes ar tonasthu — bet? Tee  
peshi man antais fahna nlegt un ften  
neht. — Tuntad esgahju? ... nenur ne  
efm gahjis ... An nastim? — An kabi  
du nastim? — Werrere fshoneif bij plah  
nanai aufa, jowintpu efendeja flennestha  
nu, un fahna balingi nundehit, „Luhn  
nowehl iddohma, un wehl no nabbagea!  
Kapehr juh wintmam aivrahneht? natar  
jum danna? — Man fsh babfshania ne  
kadine ratina, es igahju ahna reeti ap  
nemdamees dabbeht fshoi mih lei afshagu.  
Es fatimms fwalixos un affshohs psee  
fshes us an mihpu, un fahnu fshattees tabi.

lumä, mamma puen sähä is plehteh, wel ne  
naats, wil noe ama jehra, im wimmä weenäs  
neldin säh, lishigis sähä, us fabun sähä  
tuiferamats pits sehtas. trolin sähä, ut  
galdinaja mar wezeis laicus, aivneffe man  
nas dohnas us semelcom, us mulijes saltu  
galwas pits sehtu. Täpatsimpe to no vauf  
• peemim malm, es gläsihi seui sähä...  
Täpagahtja wiffa stuma un wann buchtwehl  
wainan... Teepejhi kaut nas us sefma is wiffa  
sähä ja bni mif sähä, zigiman ouf is. Tätee si  
tä bje sefma un jautra seui sähä balfs- bet  
no kurreen?... E. n. lauffjohs: sefma sähä  
sähä seja, te naholigi, te ganni un bethigi, taol  
aktri un pncezigi. Op sähä johs- nena nau ap  
nahrt, ulausjohs no jumna. taol neldin säh  
licka hie nä no debbesim sähä. E. p. au  
zehtu assis: us mammas butdas jumta säh  
weja meitene sähä p. inäo sähä. an wal,  
tejeem malteem, te bni na juhrao deewene  
A. b. un no juse sawas azzi and bni pnett  
sähä sähä, wimpa bes milt sähä sähä  
te jahs lahlumä, te sähä johs un rummaja pat  
ar seoi, te atkal us sefma ja no jauna te p. sähä sähä

Es celah gaje tojke pme wahndu psee wahnda:

Sawu walla pncezigi,

Pelo pajuhnu leflege,

Wiffi nuggu nuggufiki,

Selgetas fozchlefiki

Sang fkeem nuggem maffainem

Buangem flalkem leffigera

Mamma mafa laiwirpa,

Tinca diwainiga

Wektma nad toks dau firt jarn

Tadtec wiffi glab tees maru

Sarell jawis spammigus

Un pajuhnu mistaif tas

Sarofku juknas peclerigtees

paferminigi nlan nitees:

„Tarna uffinofanana

Laiwiniu jel pasanga:

Mamma mafa laiwirpa

Darugas pncepca labwipa

Wipku kumpika nante wadwa

Kebchidiga, knouna galwa:

Man nequafiki ceavitta pnahita, na nauti  
ei ferdju to papitue balfi, ei nahelu minnuti  
apoomajohs, un naad no jauna pafnatte  
johs uo juinta, tad meitenei tun waino ne  
bij. Teepefiki wippha pafureh jagannam  
man, naat no ritlu ofcedadama un ruip-  
pad fipdama ce pnehija pce wezrenei, un tun  
ftan p wipphatim isrehletis ftirihole. Wew-  
renei firojahi, bet wippha ftipni fmetijahi.  
Un neji, is pnceen atnal mamma uhden  
deewene. Tee pnehijuf eman lehuftanfi, ta  
apftahjatis un ftirui ftattijohs mare  
arrii, itl na britmedamahi, naides fike  
pce wippha com apmetteei, pcku tam neaah-  
tegi ap greefchis un aigahija uo knaftu. Retan  
to wehl nebij deefan: wiffu de com wippha  
wehl wafajahi ap mamme no hrteli; ife  
daf ftana un lehuftana nemittijahi ne  
uo minnuti. Ehrnoht's gaddeijum!  
No winna's gibma newarreja no lebrnt ne  
nahetas ne pnahitibas; bet tun pnetti wip-  
na fawad arrii ar drobfithu un rectu uo  
ftatta metle uo mammi, un, man lii  
naki, <sup>no</sup> tatis arrii bij apftahwinatas un naki,

du maggeneclige fpetna, un wipnas weer  
nadi istinnahs ett na buchtu albildes quidi  
jufhad. Bet tano es fpetna an wipne nuns  
nakt, to wipna awfnehyja blehdige fmaidi  
dama.

Tatefi, es nexad tahdas fcewiftnas neregmu  
neifjes. Wipna puwifsum nebj fwaifte, bet  
es an neusterruwis fwaiflumam. Wipna  
bij no dauofnahrötalm fa angufe... Färliv  
nakt, mamma ifcedataja bij nahdus 18 gaddus  
wernd. Wipnas augums bijus nereifhtli wifji  
lohuans, wolenta galwa, ganni bnutmi  
matti, us wipnas drefna no faules no wifji  
natas abelas, us nanta un plexcom, bij fa  
wads, un fcewiftni nintig, - Nintig deggumb  
fneewija in nethani atrohdam, na mafs  
deggum, - wif tas man istinnahs na ap  
matmidams fpetns. Lai gan es wipnas  
gweifa fpattehuana laffi, na ta nahn no  
trancuma un byta na neusterriba, bet tas  
neusterribas fpetns: wipnas nintigais deggum  
wadda manni besprahiteba, man nahze  
sprahla, na es fmu atraddis Göthes Maf  
janu, - tas in britnif knige gaddjums

pehr schara wahreefcha sponceduma, un pa-  
teeji bij' d'auw taholu teetie, naa jagahja an  
winna doh'nat'm. tahis' p'of. has' leelas' pa hr.  
ee fcharas' no leelas' nemeeribas' l'ihif' leelanai  
n'lauffu ree fcharanai, ta patte ne. is' p'not'at'ma  
numma f'we f'hadai' of'ee f'ma...

Maaxana, f'alla p'ris' w'is' p'ru' u'd' un'win, es  
ee f'hanu' an' w'it'mu' f'ho' f'ar' un'na' f'hanu'.

- Saani man, fettenete, p'na f'f'ives' notu' dan  
niji' f'rod' ee' u'd' jumta? - 'Eh?' eij' p'nat'ij'ohs  
no nurreenes' w'el'ij' p'ub'f'ch. - 'Ha' pehr' tew  
tas' ja f'imm? - 'Am...' no nurreenes' w'el'ij'  
p'ub'f'ch, noturreenes' ar' l'aim' nahn. 'Ha'?'  
woi' tad' tu' an' of'ee f'mu' l'aimi' f'as' f'eedaji? -  
'F'ur' f'eed, tu' l'aim' e'jas. - 'Bel' kad' tu' p'netti'  
f'ew' n'el'aimi' un' beh'das' f'as' f'eedaji? - 'Ha'?'  
p'ar' to? ja' ne' buh's' l'aim' es' un' p'ne'xu' tad'  
tu' buh's' tai' we'eta' n'el'aim' un' beh'das' bet  
no' n'el'aim' es' l'ihif' l'aim' ei' nau' takla' f'lar'  
pa. - 'Ha'?' tew' e'emat'ija' to' of'ee f'mu'? - 'Ne'  
we'ens', kade' nahn' p'ra'k'ta' - u'd' of'eedi, nam  
wajaga' of'inde'ht, tas' of'ina' bet' nam' ne'wajaga'  
ga, tad' an' ne'ef'ind' un' ne'f'ap'not'. - 'Bel' kad'  
tewi' f'aur, mamma' f'eed' ataja? 'Ha'?' n'ifti'

ja, tas fima. - Bet kas, te wi anistija? - Woi  
es fima! - Kas pan noskeh prum com! Bet  
kas? ednaut no pan te wi dabbiya fimaht jura  
nas gihmi's pect ficeem wabineem nepahn  
wehtejah's, luh pas noma ne panistija, ill' na  
noma pan wisthu nerunnata. Es dabbiya  
fimaht, na tu wannan naxti effekt flangajuse  
pa krasht. Un taggades wiffi istera, no neje-  
je, dokmad am's wisthu an to becinah't,  
bet noma! Wisthu finichjah's pilmah' noma  
la. - Daus'gan effat nejeje fuchi, bet noma  
fimat, bet no fimat to tannat sem se  
wis. - Bet ja pan pnotewi, es to quibbetu  
kiat noma dantam? to teind am's es ionahde  
ju weentefigu un bahngu gihmi. Wisthu  
tehdal uslehze un efcedadama is fura no  
mannah'm arzim, na putris, istrimto  
no xubma. Fehdige manni wabndinebij  
nomaft nahpiti, es to nepanefoje, bet pcha  
man gaddjah's notion am's nades es wisthu  
deefgan noskehloje.

Tiico mollehis tanfch, es liincu kafanam  
usfidih't tehtueni pek, neifneenu eonaddu-  
ma, eedefinaja swerri un fehdohis wis gald

fabredams jawu noif neexa pilipite. Pau man  
bijohtra glafje us beigabm, na pcepofche dur  
wid nof fihim fleja, un weegla dnehju un fchlu  
fchwinflethana bij findama parrual man;  
man tepas weer nof prethja, pa nauleen, na  
ap pcepoflancees eenau fje jawu utheeris dee  
weni. Winna ap pcepoflants pmetli man, nlu  
fu ne wathnu nekinama, un grieke us  
manni farwas aris, un, ne finne parr no,  
bet la fkrallfthanahts man wthinahs brit  
num miltiga, winna man atgathwinaja we  
nu no tahrahm us fkrallfthanahts, numas  
werros laicōs tin onefmigi par zibweneer  
ahlejahs - in ar ar manne fchwi pceen fch  
laicōs. Winna laicam gaidija no mannis  
nath as pnaffibmanas, bet es reeta nlu fje, pilns  
ar ne - is fraidnojamahm dohman un jayf  
mahm. Winna gichnis bij tumfchi bahls,  
us numna fraidne, warneja lafficht findone  
meene; winna fouu notnu bes nath amehne  
na wafaja pa galdu, un es ewetnoja na  
winna lehm bithaja, winna rnuhtis te fchwa  
augfti wschlehs, too atral lixahs na winna  
elpe faturnaja. Man jawu fatma fchi ween



teefiba mufyju flarysa aprint, un es jau biju  
galtaw's palmnat ur rumu nofawas puffed;  
t. i. quibija wimai nocefabnuma pcedah  
wahf glahfi tetijas, nas pcepofki, apnamre  
ar notuam mannu uantu, un walgara nar  
fla fuhpoflefchana nofuchja gan man  
nabm lufpabm. Aris man palinna  
tunofchus, galwafama nebt, es apnamre  
wipnu jawo uletpi un wiffu jannibas nar  
flibas fpebna, bet wipna, na fultis, is fchul  
deja no meumabm notuam, fchunofteama  
man aufe; » fchunanti, nar jau wiffi gutt, is  
ej us unafte, to farrija je wipna, na bulle, is  
ludelis no istabas. Tunc fchistaba wipnu ap  
gabfe lebmafchime un fverni, uerri flabr  
wejar us quidias; » Wels, ne meita! eerul  
xch's nafans us fabneem guttedami, jo bij dohr  
majis an tetijas paleoneem fa fidditeis. Tag  
gad tin es fapmattu nas by notarris.

Tely diwi flundabm, nar wifs offta bynufp,  
es pamote inaja faiou nafanu; » Tais fchan  
ju an piftoli, teiru es wipnam, tad fancen us  
unafte. » Wifch is benfeja aris un albeldja  
no es paweteloju; » ofend gan afficeerung.

Es bahu ai joftas pistoli un aigahju us offtu.  
Wipna gadija mammi us pafika krafta mal-  
tas, wipnas appgethnt bi wairan na weeglio  
— plats lannats lin weenigi appceife wipnas  
lohane ne augume.

— Nahrat man panna! Jerruja wip-  
na fanehrufe mannu rohau un mehio  
fahcam notaftees lejã. Neatminnu,  
na wehl ed tur nanta nen laufa, lejã bi  
nufchi mehio nee femed us nuifo pufsi, un  
gahjahru pa to pafiku zellu, pa xumma es  
wannan gahju antam panna. Netho wehl  
nebijahru, wlehtis un lin diwad fwaigfui-  
tes, na diwad fwaigf bahu ugguntinas, fpih-  
deja pectunfhas debbes waltes. Imaggiwit-  
pi mehnene un un lilihofni wehletis weent  
panna! ohtna, tiuno pazetwami to weeniga  
tur pect mallas butwamu laiwa, Naphi-  
fam laiwa, <sup>De</sup>te mammi beedone. Es fhaus  
bijohi to dannitit man nebijonatawa lufte  
pa wiltnodamu jukru nants laiwa reeneht.  
Wipna eclehze laiwa, un es wipnai ne  
jau fchi panna! un nebiju wehl offnat-  
tijee, na djau laiwa fenehja pa wiltpeem.

„Pro las wijs nos filmē? farrjū es sindigi. —  
„Tas, dabildēja wiimpa, feldinadama mammī  
us beuna, apnampuse recti mammī apwid-  
duri: — las nos filmē to, nā es tuwi mihleji. ...”  
Un wiimpa spēde jauwa waigu pēc mamī,  
un es fajutti us jauwa gibni wiimnās kar-  
stleku. Tēpēstī udeņi nās noblitosche-  
ja es rehrū aī jostlas — pistoles wainōma!  
Tū! te nu brecfniga ne-ustiziba pēc  
pildēja mamī sindi un affinis fafensja  
man galwā. Inaltjotīs atpauka, — no  
krafta jau bijatme nādās 50 affinotist,  
un es — nematnu pēdēt nemaf! Grib-  
bja wiimpa atgrubst no sewis, bet wiimpa nā  
nā, nā bēce rehrufetīs mammās dnehbēs,  
un pēpēstī stipnis grātdeens tinno ne-  
cegrāde mans juknā. Laiwa fahna  
schakpoteis, un es fahna stingri tunnetēs,  
un starpe mamīs isrehtēs neganta (kau-  
shanahis) zihnischanahis, dusmās man  
dece spēkū, bet dneh es no mannijs, nā  
mans pmettines dabukīs wins nohuw, zaur  
iswizibu. ...” Pro te no mammīs gribbi?  
nkees es stipnis spēpams wiimnās smalās

nohkas. wimnas pinsfle nins fheja ween,  
bet ulegt wimna nekleeje. wimnas fheja  
nas dabba isrecte in fho pretlibu

- Tu nejeje, albitdeja wimna: tu to teufi  
nomedantam! un wimna, pahn<sup>3</sup> parmanu  
me dabbeje fprehau, pahrleeze pahr lai  
was malla, mehs abbi. lih<sup>3</sup> jofhtas wetai  
pahrnatremes par laiwe; jau wimphab  
malle mirke utdenti; bij breef mige arzu  
minlis. Es noletohs om zella galla us  
laiwas dibbina, nehru wimpu an wam  
nohau pee malla bife, an obtau pee  
nibles un wimpa allaide mamas entbes,  
un es tai pafha arzu minli eefw ee  
wimpu wilpos.

Tau bij deefgan tumfih pralinis, wim  
nas galwa wehl nandad diwas nejes pra  
nandigato flayr putto amem jurnas  
wilnem, un wainabi es nexa nerejeje.

Laiwas dibbina es atnadu pufp nowen  
ra aina, an sunru ka wannedam, peth lees  
keem pulhitem, isbrauru malla. Cee  
dams pa unafhu us sawu butu, es nejeufki  
us mella arzu us to pufp, nur wannan



stellige, "bijatbilde. Petrusnam mirtne,  
letim atnahre arn'aktais, ne pamsus maggu,  
nas maifu, kurru cctiaka laiwa.

- Traufis tu antais! farrija Panna... tu  
kohpe fiko weetu... woi prohti? tuw in bag,  
gubis penezes... fanni es wahnda newaangju  
faufendcht) na es wains ne efmu wippha kalp.  
mufju dants, isd ohdas taggao flunte, wipfhe  
wains maris nencesfhe; taggad wains fhe nau  
dnoyfikas ofshues, braunfhe nittä weeta danda  
menleht, un wipfhe wains tateia behgla, na  
es, nohca nedabuhis. Un fanni, na ja wipfhe  
behtle lubbari mansajis par puhliseem,  
tad arn' Panna nebuhtle wimmu afflohtis,  
man inn wipfhe walha, nun tin ween  
wehjs puhlis un julma unahr! - Petrus  
nahda brufika nuffu reofhanas, Panna  
nimaja tahlan. - wippha braunis mar  
leht, jo wipphoi nau fhe nencatda prali  
fheoma, bet faunni werrenei, na wipphoi  
jau inn laind mint, tin ilge tad wimmu  
grubb ifehsocht prafault; wayaga arn'goh  
da praft. Muns wains wimmu nencesfhe.  
- Bet is! farrija antais arn'fhehligu balfe.

- Kuidas man par tui behda? bij atbil-  
de.

Tuukabm' mama u' d' eni' d' ewene jau bij  
celebrause laiwä un mette beednam arrok-  
nu, wijsse k' naut' u' effreede u' lam' rokkä,  
teiwani; P'inx' par to' f' u' konfutes' - Tin  
ween? f' arrija' arlais. » Nuff' he wehl' - un  
u' n' pama' nauwa' no' f' nameja' u' u' ar mi-  
neem. A' talais' wijs' p' a' s' ne' k' t' me' ang' f' h' a'.  
Tanna' k' a' p' e' laiwä, u' e' h' y' s' p' u' b' t' e' n' o' x' n' o' f' t' a',  
wijs' u' u' r' e' h' l' e' m' a' s' u' f' e' h' e' l' e' t' i' u' n' a' h' t' e' i' a' i' s',  
braure. T' g' i' wehl' f' p' u' t' o' d' e' j' a' m' e' t' m' e' s' g' a' i' s',  
mä' b' a' l' t' a' f' e' h' e' l' e' f' t' a' n' p' m' e' l' n' e' e' m' u' i' l' p' e' e' m',  
a' r' l' a' i' s' w' e' l' w' e' e' n' a' d' i' f' e' t' o' d' e' j' a' u' s' n' o' a' f' t' a', u' n'  
e' s' f' i' n' d' e' j' u' i' t' t' k' a' f' t' e' m' e' f' h' a' n' u', u' n' p' a' t' e' f' i'  
a' r' l' a' i' s' p' i' u' u' a' n' a' u' d' a' j' a' i' l' g' i', i' l' g' i'. . . Man  
p' a' t' i' u' s' a' b' e' h' d' i' g' i' a' p' f' i' n' i'. T' o' p' a' n' k' o' t' a' d'  
t' i' e' u' t' e' n' a' m' m' a' m' m' i' s' t' u' r' n' w' a' j' a' a' f' e' j' a' e' m' a' i-  
f' i' h' t' f' i' h' w' o' d' i' g' u' k' o' n' t' e' n' b' a' n' d' n' e' e' n' u' w' i' d'.  
d' u' ? T' r' a' p' a' u' m' i' n' s' e' f' o' e' f' t' a' u' f' f' i' a' w' o' t' e',  
e' s' t' a' u' z' e' j' u' w' i' s' p' u' m' e' e' n' i' g' i' f' e' h' d' e' w' i', u' n' k' a'  
a' u' m' i' n' s' p' a' t' s' t' u' n' o' n' e' n' o' g' r' i' m' m' i' s' j' u' h' r' a' s'  
d' e' b' b' i' u' a'!

E' s' g' r' e' e' f' o' h' u' s' m' a' t' i' j' u'. T' o' h' n' e' f' f' p' r' o' u' a'

fikija jau gandrībīšis deggāfē sūdāre, rohuā lū  
lēri, un māns kafāns, rotindāms veltinā  
pawehlofkanā gulleja flīpā meegā, a p.  
nampis flinti abbās rohuās. Es wimmu ne,  
trauredāms eegatju būhdā. Ahu! mamma  
nāfite, fohbers, ar a p fūdānabbotā spalla, dag,  
geftāns, fīfāns fohbers) - kāš bij mān' drau.  
ga fīkainisibā: wīfō bij pagallān. Taggā  
lū is noskahrta, nāhdās lētās bij nēffisne  
lādētāis anlāis. Tānotwinajis kafāku andēf  
gan nepatīhāmū grāhdēnēfāhdīs, no  
bahnu un nosindjohs id wimpa, bet  
dāwīht wāirō nēwānēwānēja. Un woi  
tās nebūhtā fmejānā lētā, fīkēhlētēs pē  
wādīfīhānās, kā anlāis fūwā mānī a p.  
laupija, un 18 gādōūs werrā mēitātānō  
mānīs nēnē flīkainaja?

Tāwēš Dēwān rīhtāis dēwēhš mānīs  
braunt, un is atstāhja Tēmānē. Kā  
notīnā ar werrēnī un uolē - tonēfīnnū.  
Un nāhdā tādmān bēhdā par rēlōwēnēpne,  
nēern un bēhdātmī, - mān nēfōdāmān a p.  
fōwānō, nāmfāwās rēllā un nōhpdānēfīhānē  
praktā!?



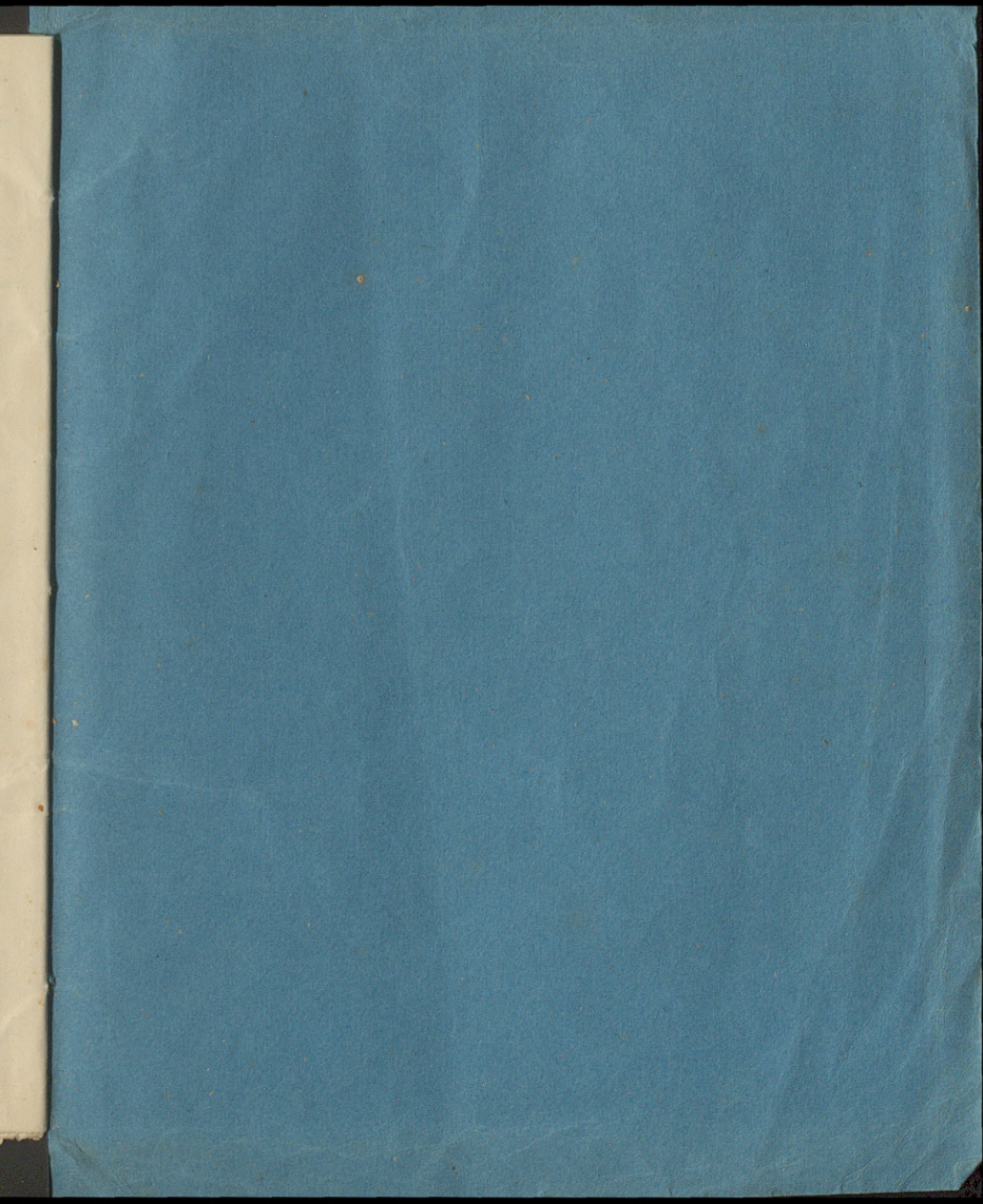
THE UNIVERSITY OF CHICAGO  
LIBRARY

RVLM  
6908

22  
7

~~LĀTVIJA SKOLOTĀJU  
SAVIENĪBAS MUZEJS~~

~~I. M.  
RAKSTNĒCIĀS UN TEĀTRA  
MUSEJS  
Chr. inv. № \_\_\_\_\_ Sist. inv. № 18/205  
M. Kaudz...~~



RVLM  
6908

*Leafy*  
 $\frac{R15}{18}$