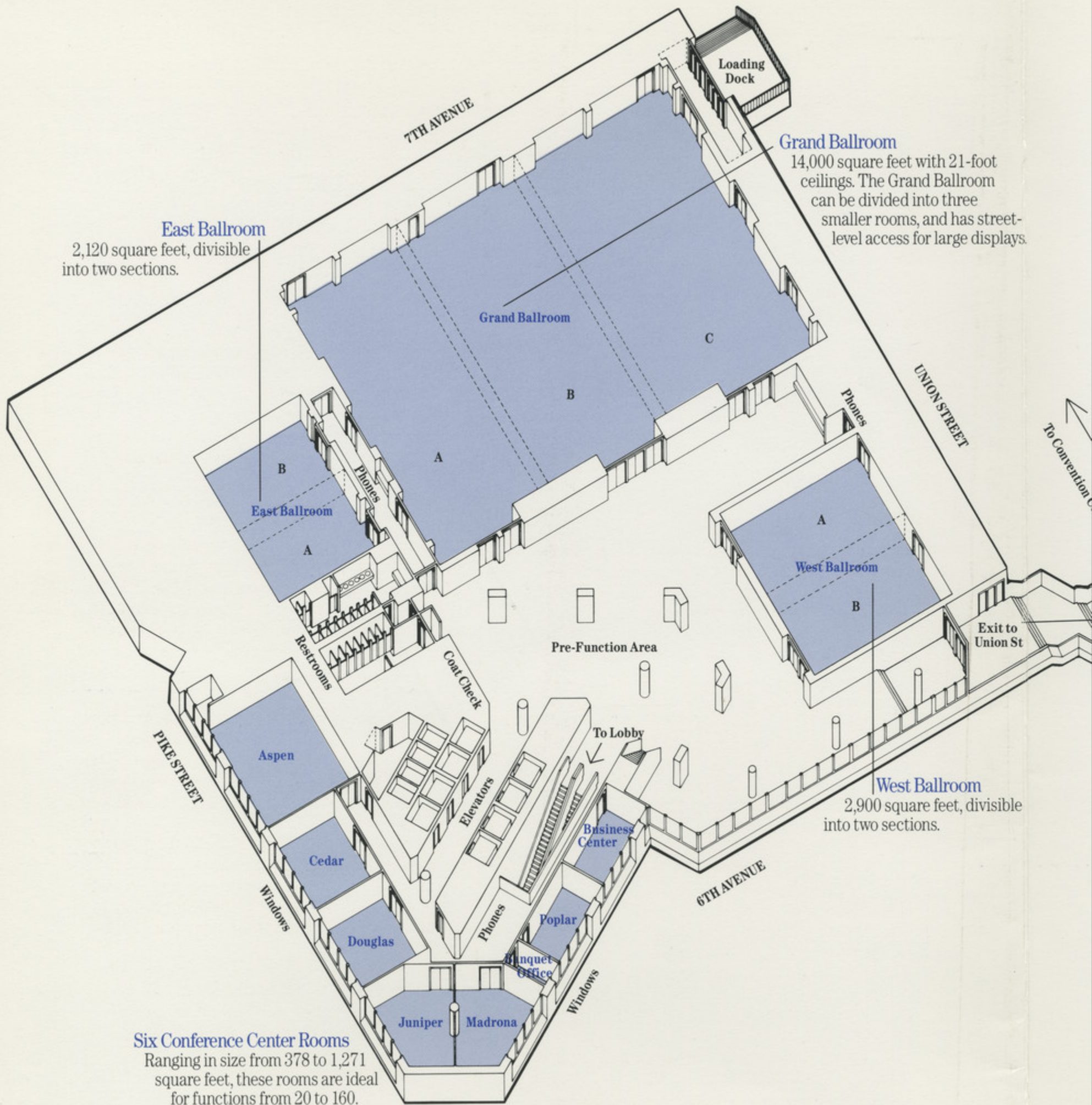

THE SEATTLE SHERATON HOTEL & TOWERS

FACILITIES GUIDE



2ND FLOOR

More meeting space on one level than any other hotel in Seattle.



East Ballroom
2,120 square feet, divisible into two sections.

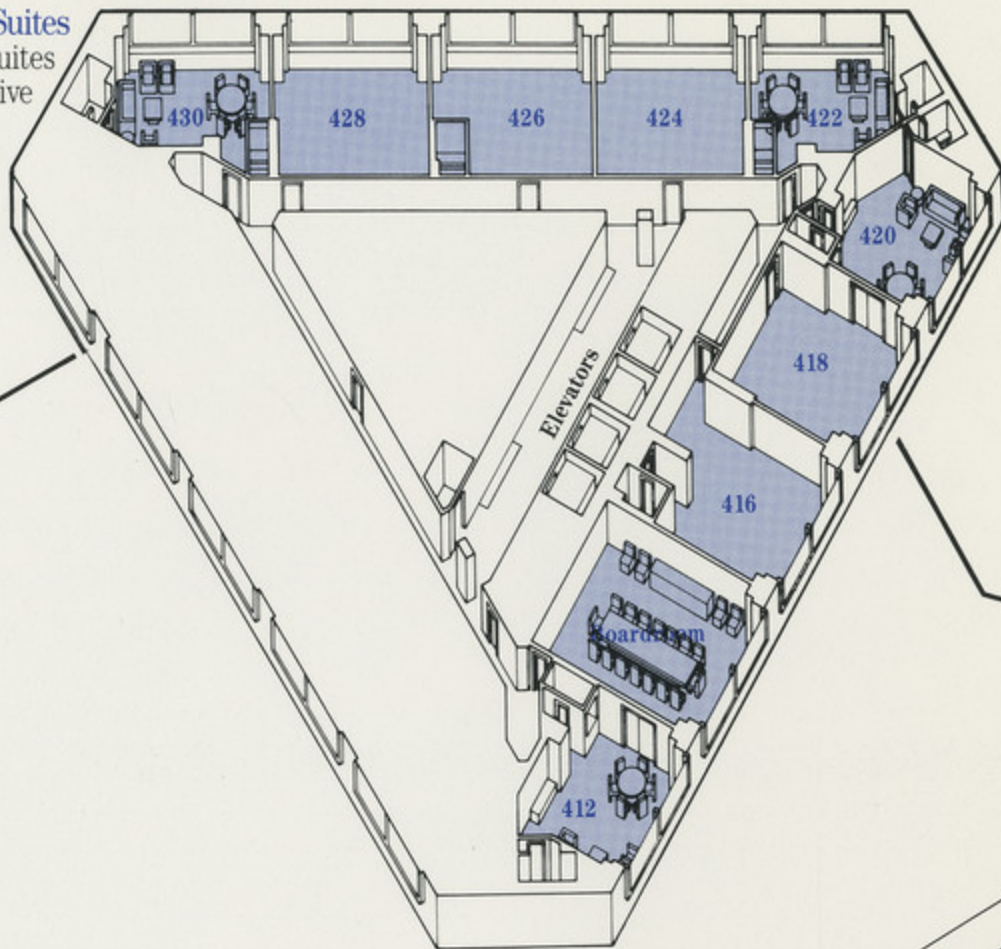
Grand Ballroom
14,000 square feet with 21-foot ceilings. The Grand Ballroom can be divided into three smaller rooms, and has street-level access for large displays.

West Ballroom
2,900 square feet, divisible into two sections.

Six Conference Center Rooms
Ranging in size from 378 to 1,271 square feet, these rooms are ideal for functions from 20 to 160.

4TH FLOOR

Meeting Suites
Ten meeting suites including an executive boardroom.



To Convention Center

Exit to Union St

Restrooms

To 2nd Floor

Metropolitan Ballroom

Phones

Windows

Elevators

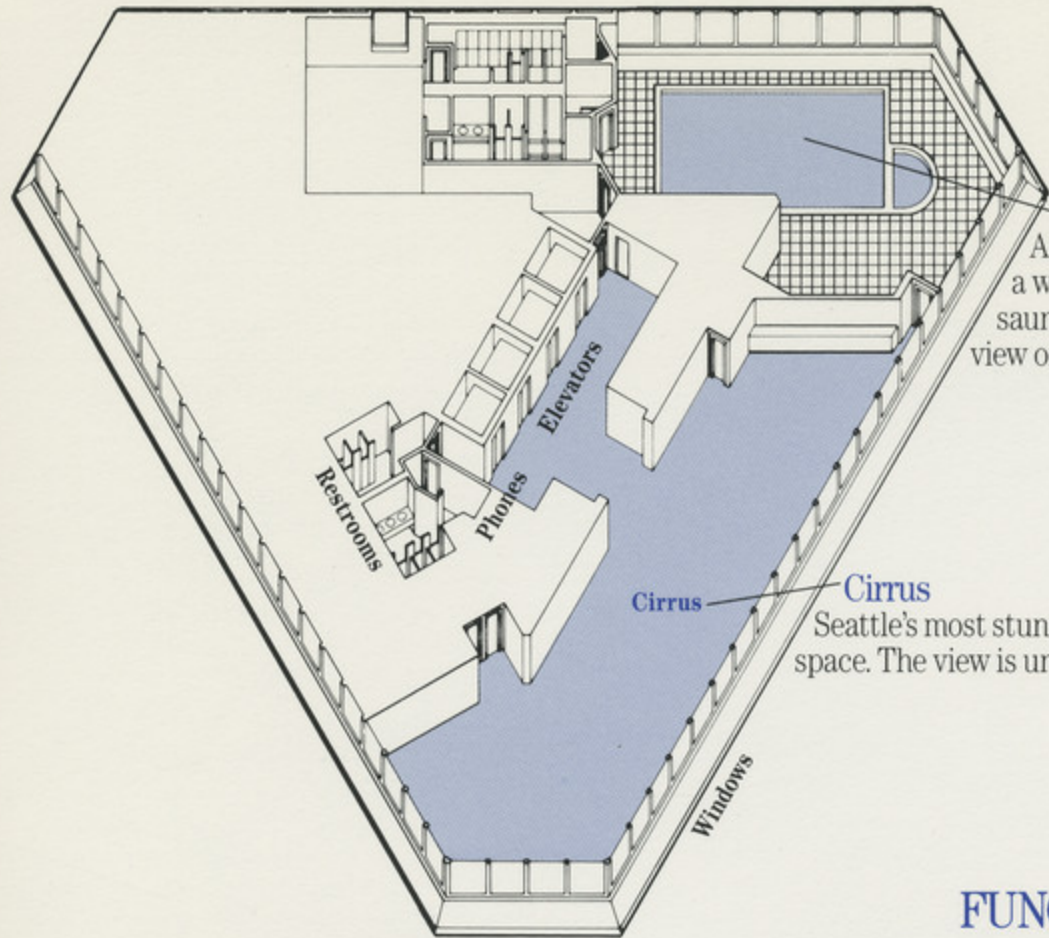
Metropolitan Ballroom
4,372 square feet of function space, with easy access to 2nd floor areas.

3RD FLOOR

foot
om
e
s street-
displays

m
divisible

35TH FLOOR



Pool and Health Club
An indoor pool and Jacuzzi adjoin a well-equipped weight room and sauna. And of course, a spectacular view of the city.

Cirrus
Seattle's most stunning function space. The view is unparalleled.

FUNCTION SPACE SIZE AND CAPACITY

	Square Feet	Dimensions	Theatre	Classroom	Conference	Banquet	Reception	8x10 Exhibits	Ceiling Height
SECOND FLOOR									
Pre-Function Area	7,500	—	—	—	—	—	1070	36	
Grand Ballroom	14,000	100x140	1750	875	—	1140	2000	91	21
Section A	4,200	100x42	525	250	—	340	600	24	21
Section B	4,200	100x42	525	250	—	340	600	24	21
Section C	5,600	100x56	700	350	—	430	800	32	21
West Ballroom	2,900	58x50	390	150	—	240	250	18	10
Section A	1,450	50x29	200	75	—	120	125	—	10
Section B	1,450	50x29	200	75	—	120	125	—	10
East Ballroom	2,120	53x40	200	100	—	140	200	12	10
Section A	1,060	40x26½	100	50	—	60	100	—	10
Section B	1,060	40x26½	100	50	—	60	100	—	10
Conference Center Rooms									
Aspen	1,271	41x31	150	80	30	100	125	—	9
Cedar	696	24x29	75	42	27	50	60	—	9
Douglas	624	24x26	65	40	25	50	50	—	9
Juniper	676	32x21	65	35	25	50	50	—	9
Madrona	676	32x21	65	35	25	50	50	—	9
Poplar	378	14x27	30	20	15	20	20	—	9
THIRD FLOOR									
Metropolitan Ballroom	4,372	91x52	450	275	—	300	550	31	12
FOURTH FLOOR									
Suite 412	468	26x18	20	—	10	20	50	—	9
Boardroom	720	24x30	—	—	18	18	—	—	9
Suite 416	676	26x26	65	35	20	40	50	—	9
Suite 418	676	26x26	65	35	24	40	50	—	9
Suite 420	468	26x18	25	—	10	20	50	—	9
Suite 422	468	26x18	25	—	10	20	50	—	9
Suite 424	676	26x26	65	35	20	40	50	—	9
Suite 426	468	26x18	40	25	20	40	50	—	9
Suite 428	676	26x26	65	35	20	40	50	—	9
Suite 430	468	26x18	25	—	10	20	50	—	9
35TH FLOOR									
Cirrus*	3,000	100x30	325	175	—	250	425	—	11

*Video equipment not recommended

Surprising Seattle

We hear those words often. But that really isn't too surprising. Seattle is the closest West Coast city to Boston, New York, Chicago, Europe and Asia.

With the majestic Olympic mountains to the west, the Cascades to the east, towering Mt. Rainier to the south and Puget Sound in the middle, Seattle provides a notable playground for outdoor enthusiasts. From sailing to just enjoying the magnificent scenery, Seattle offers something for everyone.

Seattle is also the cultural center of the northwest. The Seattle Symphony, the Pacific Northwest Ballet, Seattle's Contemporary and Repertory theaters, the Seattle Art Museum, and dozens of fine galleries are all just minutes from the front door of the Sheraton.

Sports are king. There's professional football with the Seahawks, basketball with the Sonics, baseball with the Mariners, and of course, the University of Washington Huskies in all seasons.

Seattle is also the home of the 1962 World's Fair. You can still ride up the Space Needle or just stroll through the park-like grounds of Seattle Center.

Seattle—with a vibrant central core where shopping abounds, and visitors and locals alike flock to the famous Pike Place Market. Historic Pioneer Square is another favorite.

Along Seattle's colorful waterfront, you can explore the undersea world at the Aquarium, shop for curios along the pier, or enjoy some of our famous seafood.

Seattle. There isn't one single thing that makes it so attractive. Rather, it's the right combination of many things that makes Seattle one of those rare cities that people are always falling in love with.

At last, a Seattle hotel actually designed for meetings

The Seattle Sheraton is a meeting planner's dream. Forty thousand square feet of meeting space. 13 meeting rooms on one level with easy access to twelve more, a 14,000 sq. ft. grand ballroom and direct off-street access for equipment and displays. And 840 guest rooms, including 40 of the most luxurious suites around.

The Grand Ballroom with 21-foot ceilings and 14,000 total square feet is the finest in Seattle. With street level access through oversized doors and divisible into three smaller rooms, it is also the most flexible.

In addition to the Grand Ballroom there are 2 smaller ballrooms and 6 other conference rooms each sharing a generous 7,500 square foot pre-function area.

The floors above hold ten meeting suites and two other large function areas: the 4,372 square foot Metropolitan Ballroom on the 3rd floor, and Cirrus on the 35th with a breathtaking view of the city.

Most importantly, you'll find a qualified and experienced staff. From a Convention Service staff that can work miracles to a multi-lingual concierge who can do

the same, our people bring the best traditions of hospitality to one of the most modern hotels on the West Coast. The Seattle Sheraton Hotel & Towers was named 1986 Hotel of the Year and 1987 Hotel of the Year/1st Runner Up Convention Division for the Sheraton Corporation.

Washington State Convention Center

Just one block from the Seattle Sheraton Hotel & Towers is the spectacular Washington State Convention and Trade Center. The Center provides 140,000 square feet of exhibit space and 50,000 square feet of meeting space. All this "right next door."

Making business a pleasure

Each of the 840 guestrooms and 40 suites are appointed with rich fabrics, subtle tones and original Northwest artwork. The unique triangular shape of the hotel allows each room a sweeping view of the city, Puget Sound, or the mountains.

The health club located on the 35th floor is complete with a pool, Jacuzzi, weightroom, sauna and inspiring views.

The Sheraton Towers

Experience the unparalleled service of the Sheraton Towers. Here, you'll find complimentary continental breakfasts, afternoon tea and hors d'oeuvre served in the intimate Towers lounge, plush terry cloth robes in your room, a separate registration desk, special butler service and other thoughtful touches.

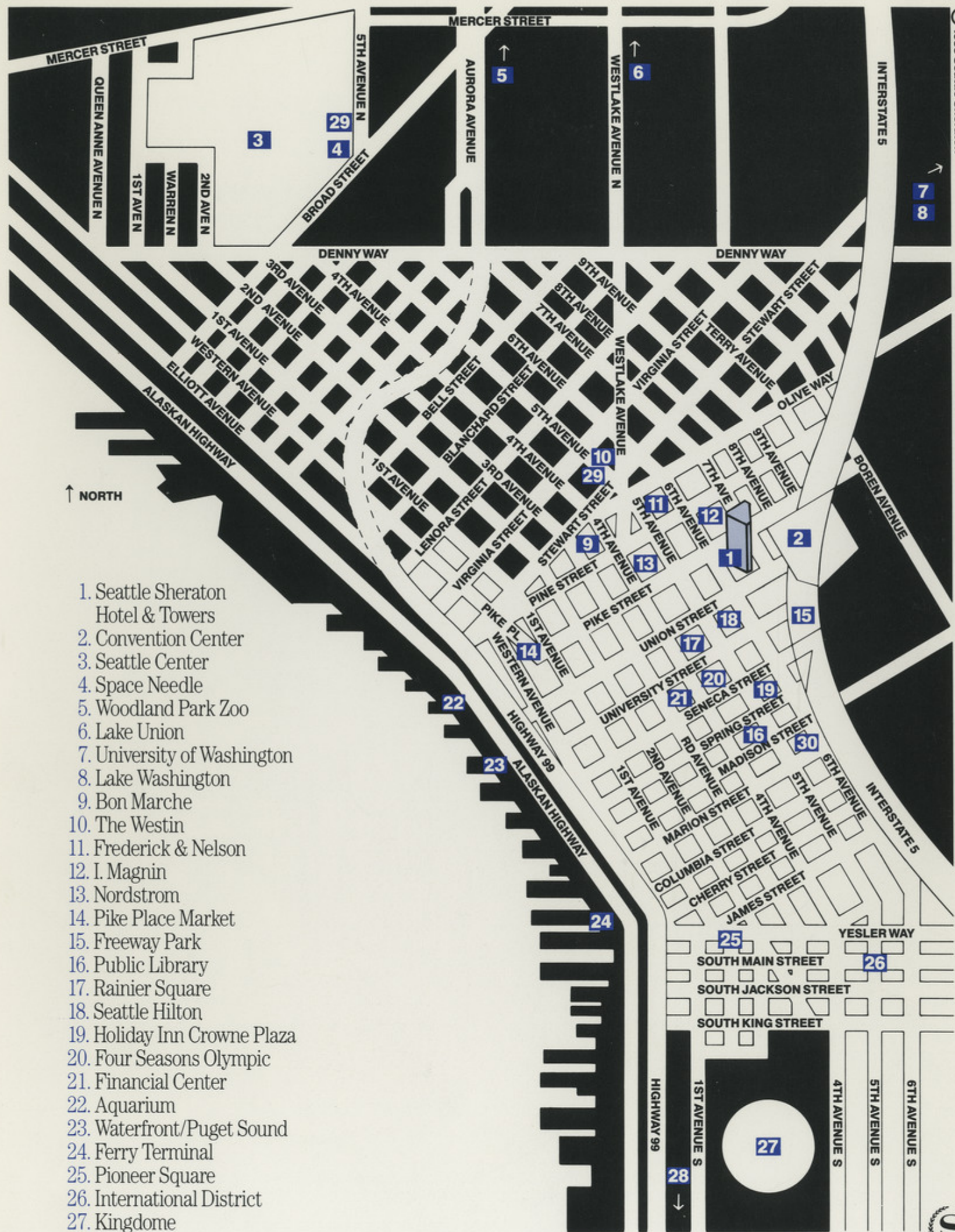
Where to meet after the meeting

With a clear view of the hotel's comings and goings, The Gallery off the main lobby is a comfortable and convenient place to rendezvous with other members of your party. From there you can follow your ears to Gooney's, a lively nightclub with some of the best entertainment in the city.

For appetites on a tight schedule, Banners is a perfect place for a breakfast, lunch or dinner. Although your meal arrives in a hurry, it's a far cry from fast food. And every evening, Banners' dessert buffet lets you sample as many cheesecakes, tortes and truffles as your conscience will allow.

At the Seattle Sheraton you'll also find our Mobil 4-Star Travel-Holiday Award winning restaurant, Fullers, offering fine dining in the classic sense, with fresh seafoods and Northwest specialties skillfully prepared and exquisitely presented.

Of course, when you're ready to take in the rest of Seattle—the sights, sounds, shopping and entertainment—you needn't go too far. It's all waiting right outside the lobby doors.



- 1. Seattle Sheraton Hotel & Towers
- 2. Convention Center
- 3. Seattle Center
- 4. Space Needle
- 5. Woodland Park Zoo
- 6. Lake Union
- 7. University of Washington
- 8. Lake Washington
- 9. Bon Marche
- 10. The Westin
- 11. Frederick & Nelson
- 12. I. Magnin
- 13. Nordstrom
- 14. Pike Place Market
- 15. Freeway Park
- 16. Public Library
- 17. Rainier Square
- 18. Seattle Hilton
- 19. Holiday Inn Crowne Plaza
- 20. Four Seasons Olympic
- 21. Financial Center
- 22. Aquarium
- 23. Waterfront/Puget Sound
- 24. Ferry Terminal
- 25. Pioneer Square
- 26. International District
- 27. Kingdome
- 28. Boeing
- 29. Monorail
- 30. The Stouffer Madison


Seattle Sheraton
Hotel & Towers
 The hospitality people of **ITT**
 1400 SIXTH AVENUE,
 SEATTLE, WASHINGTON 98101, 206/621-9000

RTMM 743037/8
 Bick. KR. D. 1/1037