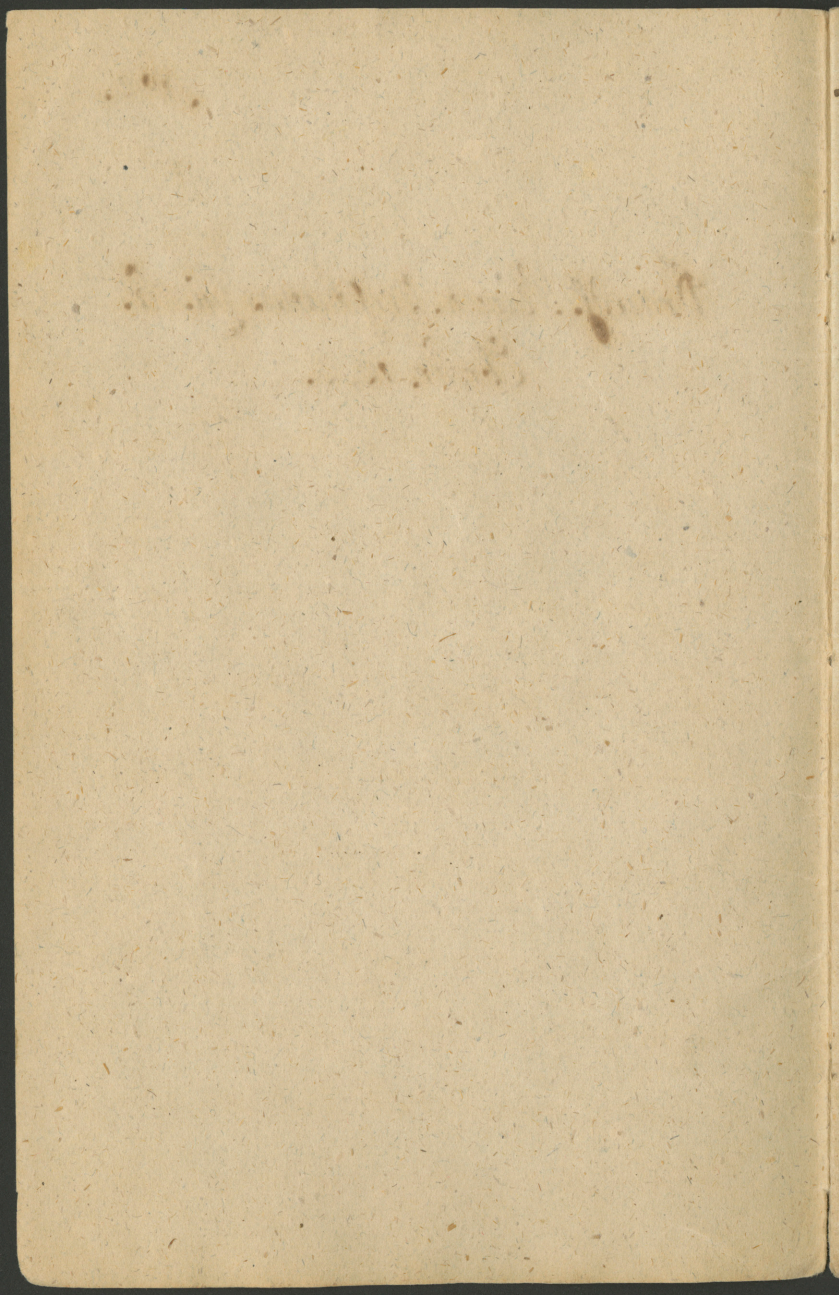


Draudf. Runn. Geeschanas Laiskâ.

Ebreer. 12, 2.

1.	2.	3.	4.
	56	55.	57.



Draudses Runn. us Mohru Laisku.

Dseed: Ar Decnas, lohti swehtigas.

I. Gr. No 280.

Terssts: Lai mehs us raugam us Jesu,
to Esahzeju un Sabidzeju tahs
Sizribas: jebshu warrejis Treestā
buht, Wensch to Krustu in panefis
un par to Maunu ne behdajis. Ebr. 12, 2.

Un nu Winda Zeschana, is-
dohdahs mums par Treestu.

Mihli Brahli un Mahsas! Na muhsu
mihlais Kungs un Testitais buhtu
warrejis Treestā buht, pee ta mums
nessahds schaubigs Trahts naw.

Wensch bija pee Jehwa eerssch Gohdibas,

preersch Sasauls Dibbinaschanas, un
baudija Deewa Preesu pee Winqa :

Was gaur ne Mo ne warreja aiska=
weta tapt, ja Winqsch ne no tihras
Mihlestibas buhtu apnehmees to
Gohdibas Krehslu atstakt, un teem
Preereem atzayiht was Winqam pee
Lawa m. Sekwa bija, un Ma weens
nabbags Zilwers Sasaulē nahst.

Pet arri Zilwers buhdams Winqsch
buhtu warrejis Preesā buht, tas stahweja
Winqa Wamā, wiffus Preerus, Mo Sasaulē
ween war doht, dabuht un baudiht.

Winqsch gan buhtu warrejis Sasaulē nahst
Ma Winqu tee Israēla Behrni sagaidija,
Ma weens leels warrens Kehninqsch eerssch
Gohdibas.

Bet schis Winnam ne patissere, schis
ne derreja pee to Mehtxi Mas Winnam
bija had Sasaulē nahye, tas ne derreja
us to Darbu, no Witsch gribbeja padar-
riht. Tadehl Witsch apnehmaks teem
Inneem atfarriht, eerssch nabbagas
Buhshanas, nigginachts un apsmets
wits Semmes staigakt.

Scho sawu Apnehmenschanu Witsch lissre
jaw senn papneersch gaur Sasajasu
sluddinaht, Mas Witsch tu apmesta:
Winnam ne bija nestrakhs Ausrums un
Straistums, Ma mehs Witsch usluhsrotum,
un nestrakhs Ninschnums, Mas mums
buktu patizis. Witsch bija neewakts, un
Lauschu atstahts, pilns Sahpju un Wahjibu.
Un ta Ma Witsch lissre no sewis rarssticht
un sluddinaht,

ta patt Wijnch pateesi Sasaulê atnahre.

Leelâ ~~...~~ Nabbadsibâ tappo Wijnch
peedsimmis, nabbags ~~...~~ palirre
Wijnch wiffu sawu Muhschu zauri, Wijnam
ne bij, siur tas sawu galwu nolixt warretu.
Nahyaretê tanni flintâ Silfatina Wijnch
sawus Saunerla Gaddus pawaddija.

Daudseem schis ne patirre, bet Wijnch
is skaidroja na Wijnna Walftiba newa
no schiks Sasaulê. Bet tas ne ween
pee ta palirre na Wijnch teem
Preereem atfazzija, bet Wijnch nesse
to Kruftu labpraktigi, Wijnam sawu
Muhschu zauri bija daud. Behdas un
Nosrumshanas, nas Wijnna fwehtu
Dwehfeli lohti speede.

Betti tas gan notirre na warreja preera-
tees

pahr teem ar No Wifsch sadraudsejahs.
Mehs retti atrohdam tahdas weetas
fwehtos Praxstos, Nur Jesus warreja
Garna preeyatees. Tas weens notisre
Kad Wifsch us sawu masu Pulziqu
Lukroja, Nam tas Jehus to bija sinnamas
darrjis, Na Jesus Kristus Decwa Dehls
effoht, un Mas eersch Wifschu tizzeja.
Tahr to Jesus preeyajahs Garna un farrja,
"Es Sew pateizu, Jehus, Debbes un Semmes
Kungs, Na. Tu schih Leetas effi slehpis teem
Gudrcem un Trahtneecreem, un tahs teem
nesamannigeem effi sinnamas darrjis."
Paet daudfreis atrohdam fwehtos Praxstos,
Wifsch behdajahs Garna. Kad Wifsch us to
leelaru Lauschu Pulru farrtija, Nam
Wifsch allaschin weenu Mihlestibas pilnu
firdi pretti nesse,

gribbedams tohs swehtiht, teem labbu
darriht, un Deewam schehl! bij ja reed,
Ma Winna leela, warsta. Mihlestiba
tappe smahdeta, Ma tee ne gribbeje
tizzeht eerssch Winna; as tas Winnam
hohti sahpeja sirdi.

Sahr teem Pilsateem eerssch Kurreem
Wissch tise dauds Brihnumus bij darris
Wissch nopuhtahs un behdajahs. Un stad
Wissch Jerusalemi weenreis uskrattija, un
apdohmaja, zise dauds reis Wissch tohs
Eedshwotajus effoht pee sew peelabbinajis,
Ma tas Winnam tise gauschi pee sirds
effoht gullejis, tohs sarirakt, un tee naw
gribbejuschi, tad tas Winnam tise hohti
pee sirds gahje, Ma Wissch sahpeju stganz,
paher Jerusalemi raudaja.

Winfch jaw finnaja papreersch, was
Wintam pehdigäs Dshiwes Deenäs bij
ja zeesch, ta Affins Kristiba Wintam gan
bij sinnama, ar no Wintam bij list
Kristitees, tadehl, jaw fenn Winfch papreersch
fayrija: Man buhs Kristitam layt ar
weenu Kristibu, un nã man in tin bail,
teerams tas tohp pabeigts.

Ta Usluhroschana us tahm pehdigahm
gruhtahm un ruhrtahm Zeeschanahm
pehy Meefas un Dwehseles, was Wintam
bij ja zeesch, peepildija Wintam Sindi ar
Behdahm un Bailehm.

Un nad ta Stunda atnahze, nurnã Win-
tam bij zihnitees, tad Winfch fayrija:
Manna Dwehsele in wiss notal nosrummufi
lihdj Nahwei! Winfch eesahze bailotees un
Trihzeht,

Winnu Dwehsele strahdaja apparsch grehru
Nasta was us Winnu gullija, un schis Winnu
Dwehseles Darbs tir gruhts bija, un Winfch
Deewu peelhofe jo Karstari; bet Winnu Swawu
bija ka Affins Lahses, tahs norritte us Semmi.
Ja nowahjehts no Zihnischanas Winfch
tas Taisnois tappa zeeti nemts, un ta ka
Sleprawa wests pee teem Winfneeseem,
was Winnu ismehje un pasuddinaja pee
Nahwes.

Winfch na tappe nodohs Taganu Bohria,
was Winnu apsmehje, schaute, apsplahwe,
Winnu Galwu ar Chrschseem Krokneja,
un beidscht pee Krusta sitte, nur Winfch
ka Launadarritais feschas bailigas un
gruhtas Stundas eersch Nahwes Zihni-
schanas pawaddija, no Deewa atstahits
juttahs, kamehr pehdigi warreja isfaurt:
Tas ir peepildihits!

ru Ta panesse Wunsch, was gan warreja
ta Treerâ buht, to Krustu.

Mad nu weens pahr to dohma, an tad
di drihs yellahs schi Trassischana Sirdi:
Mahta in ta Waina was to mihlu Kungu
un Radditaju Speede, ne ween wisseem
Treereem atzayicht, bet tahdas gruhtas
Mohras un Teeschanas pee Meefas un
Dwehseles iszeest? Un ta Atbildeschana
us to Trassischana in: Winda leela
ne apraxstijama Mihlestiba us teem
pasude schcem Zilweereem in Wirtu
Speedusi; ween muhs pestiht no muh-
schigahm Bailehm un Mohrahm in
Wunsch to Krustu panessis, mums Meerer
un Treeru pelniht in Wunsch teem
Treereem atzayijis. Tee Grehyineeri
at: bija Bailes un Mohras pelnijuschi;

jo tee Grehxi padanna Mohras un sahpe,
un ne has kâ Mohras schein laizigi un
tur muhschigi. Tas Grehyineess has
no sawa Deewa narittis, ~~teem~~ teem Grehra,
par Kalpu in padewees, tam jaw schinni
Lairâ in ja zeesch Behdas un Mohras,
jo ta sinnama sirds to Grehyineessu
weenumehr pasuddina, un eerssch Muh-
schibas ne no zittu ne warr sagaidiht,
kâ atstunts no Deewa Waiga muhschi,
gas Mohras zeeft. Eerssch tahdahm
behdigahm Kilahshanahm mehs nabbag.
Zilwersi wiffi bijam, un schis muhsu
mihham Kungam un Radditajam lohti
pee sirds gahje. Wirsch has weenigi ween
Spehje palihofeht, gribbeja scho padarnit,
no neisdibbinajamas sirds shehlastibas

Wunsch tappe tas Deewa Jehrs un us-
Krahwahs muhsu un wiffas Pasauls
Grehrus us sew. Teescham Wunsch nesse
muhsu Schrgas, un usKrahwahs muhsu
Schpes. Bet Wunsch in muhsu Pahrrahp-
schanu dehl. eewainohts, un muhsu Apwai,
noschanu dehl. sagrauft. Ja Soudiba
gull us Wunsch, Zaur Mo mums Meers
nahs, un Zaur Wunsch. Bruhzechm
effam meh's dseedinati.

Un Saldees Deewam! Wunsch in wiffu
Labpraktigi nessis, Wunsch in muhsu
Paradus lihdsinajis, Wunsch in wiffu
iszeetis, Has pee muhsu Testischanas
by wajaga. Muhschiga Slawa un
Teeluhgschana lai muhsu. Schehlotajan,
pat to tohp dohta. Nu war isweens

nabbags Grehynceess, Mas juhtahs
Sirdi apgruktinahts, Nam tee Grehsi
Speesch un sahpes padama, Nuttu ta
sinnama Sirds pasuddina, isglahbts
tapt, Mad Wunsch tam pee-eet Mas
preersch Besdeewigeem in nomine,
Mad Wunsch pee Jesus Krusta eet un no
Sirds luhds: Kristus Tu Deewa Jehrs,
Tu Mas Pasauls Grehsius effi nessis,
Tu Mas art mannus Grehsius effi
nessis, apshehlojees paht manni!

Mas scho itt no Sirds darra, tas dablu
Grehriu Seedohschanu, tam teer tee
Tamadi schrynsyoti, tahs Strahpes
atlaistas, ta sinnama Sirds tohp ap-
meerinata, ne Mas wihtu wains
pasuddina.

Bet ne ween tahds nabbags Grehyinee
tohp brihws no Pasuddinaschanas un
Strahpehm, bet tas tur silaht arriidjan dabb
Meera un Treeru sawa sirdi baudiht.

Ta Pasaulé lohti maldahs, had winna
dohma, Na Deewa Behtneem weena behdig
Ghiwofchana ween in, Na teem ne shahdi
Treeri schinni Pasaulé effohti.

Ar m. Por. un Mahsas! to meh's warram,
Nas meh's pateefigi pee Jesus zaururbtohm
Mahjahm Scheklastibu atradduschi, no
paschas Sirds- Tuschanas apleezinaht,
Na muhsu m. Tefitais mums ne ween
Grehsus peedohd un Tarradus atlaisch,
bet Na meh's ^{pee} winna, eersich winna sweht
Nopelna tahdu swehtu Treeru atrahda
No wiffa Pasaulé mums ne war doht.

Mehs fassram no wiffas. Sirds: Mad meh,
Jesu passihstam, tadehl meh. smahdam
Pasauls Preerus. Meh effam labbaru
Preeru atradduschi, tahdu Preeru, mas
muhfu Sirdis atspirdsina un stiprina.
Tas Pasauls Preerus in ihso, bet tas Preerus
no mums muhfu m. Pestitais dohd, neween,
ne atpems no mums. Mad meh. peetizige
pee hwinpa palceram, un pee hwinpa
turamees, tad meh an warram isdeenas
pah hwinpa un pah hwinpa. Schelastibu
augsti preeyatees. Schim Preeram ne ta
na teem Pasauls Preerem. Behdas un
Nosrumshanas no passialas nahs,
bet tas pass atspirdsina un stiprina
muhfu eerschkirigu Sirds Lilweru.
Schis Preerus ne ta na Pasauls Preerus,
Preerschannu padana, bet jo wairan meh

ſcho paſchu laudam, jo wairas mehſ
pehy to nahrojamees. ſchis Preers in Wipna
Laufchu Stiprums, ſchis gudana mums
drohſchu Prahtu Na mehſ ioanam ſawu
Gahjumu yaur ſcho Prehdu Celeiju drohſchu
un bes Bailehm prohm eet.

Mihli Pr. un Mahſas! ſcho Preeru
eerſch ta Nunga allaschin wairas
bandiht, un itt ihſteni ſahr to preezatees,
ſchai buhs muhſu ſinds- Wehſchanaibuh.
Muhſu mihhais Nungs un Feſtitais Naſ
mums ſcho Preeru liſt gruhiti ſuhri in
nopelnijis, gribb mums to paſchu lab-
praht irdeenas peeſchert.

Lai jel Wiſch no Schehlaſtibas mums
tahdas ſindis dohtu, Naſ Nahrigas, iſſal-
ſchas un iſſlahpuschas pehy Wipna
Preera in, tad mums neſrad. Baudischan
peetruhys.

Daschuteis schis Preests pee mums gan
Tohys aissrawehts, wiss wairas zaur to
Zuschanu muhsu leelas Wahrsibas un
Dsilhas Samaitaschanas. Bet rad mehs
paher to behdigi effam un ar Nossum
schanu pee Jesus Mahjahm raudam;
Tad Wunsch muhs eestreyina, tad Wunsch
apmeerina muhsu firdis no jauna ar
sawu Meeru, un ar sawu Preestu.

Tur slakt Wunsch mums aridjan dohd
Garrâ redseht, tra tas sairs nahes,
Kuffâ mums tises hauts, ee-eet muhsu
Kunga Preestâ, pee Wipna nahet, un
scho Preestu no Wunsch mums zaur sawu
ruhretu Zeeschanu un Mirschanu in
nopelnijis, ar pilnu Mehru bes Mitte-
schanas un Aissraweschanas baudiht.

Tise ilgi mehs dsihwojam, buhs muhsu dee=
nisch mai sirds = Wehleschanai un. Nopuhtai
buht, sia Winpa. Mohru un. Nahwes =

Gihmis mums allaschin preeesch sirds un
Aryim paleen, un sia ta Eespeeschana no
Winna gruhtahm Zeeschanahm un ruhritas
Krufta Nahwes allaschin muhs pawadda,
jo eesesch ta pastah ^{un} muhsu Swehtiba.

Dseed. Nahwes Gihmis! Tu man sia zowt=
greesig. G. Df. 64, 3. 4. vordr. Einow.

[Faint, illegible handwriting, likely bleed-through from the reverse side of the page.]