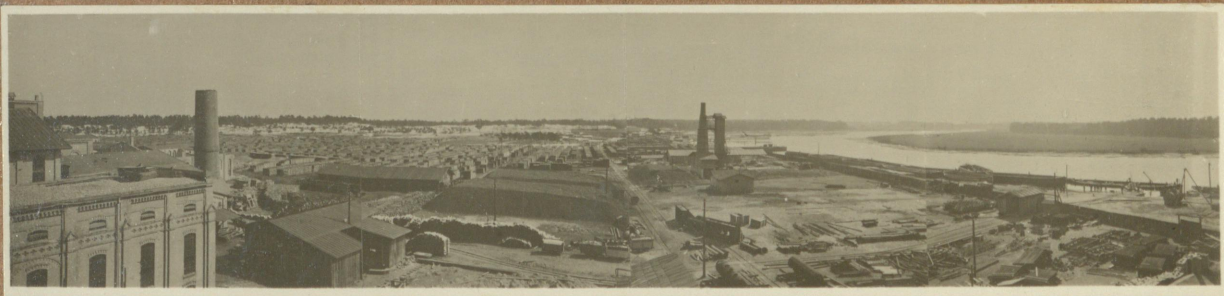




Fabrikas kopskats no rītiem.



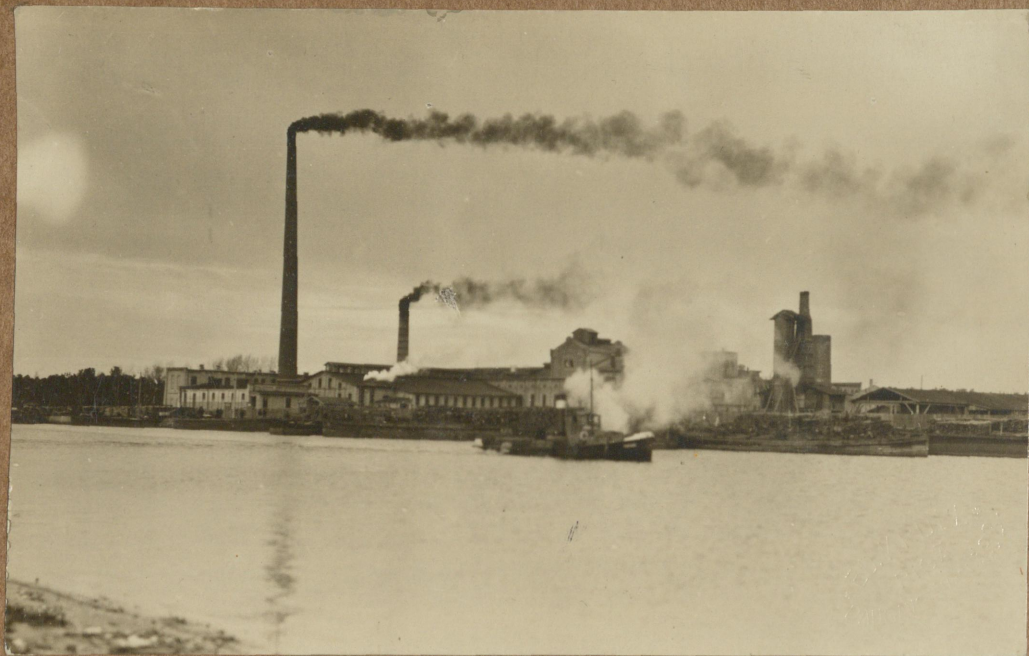
Skats uz fabrikas laukumu no  
putnu lidojuma.



Fabrikas kopskats no vakariem.



Skats uz fabriku no zāgetavas II.



Skats uz fabriku. no Lielupes.



Skats uz fabriku no kāpām.

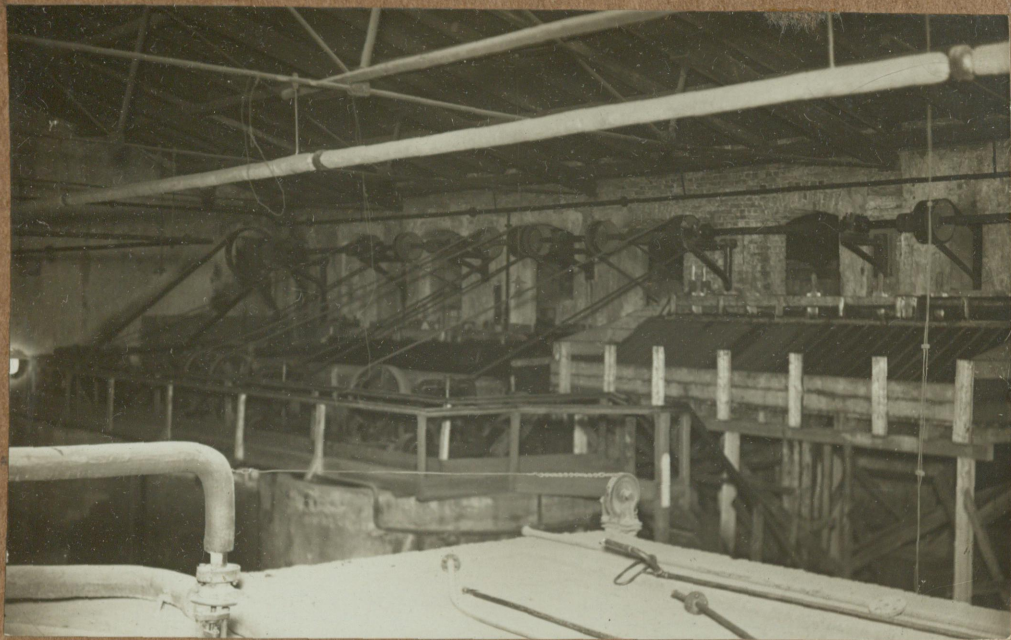


Ie-eja papīru fabrikā.



Fabrikas kantoris.

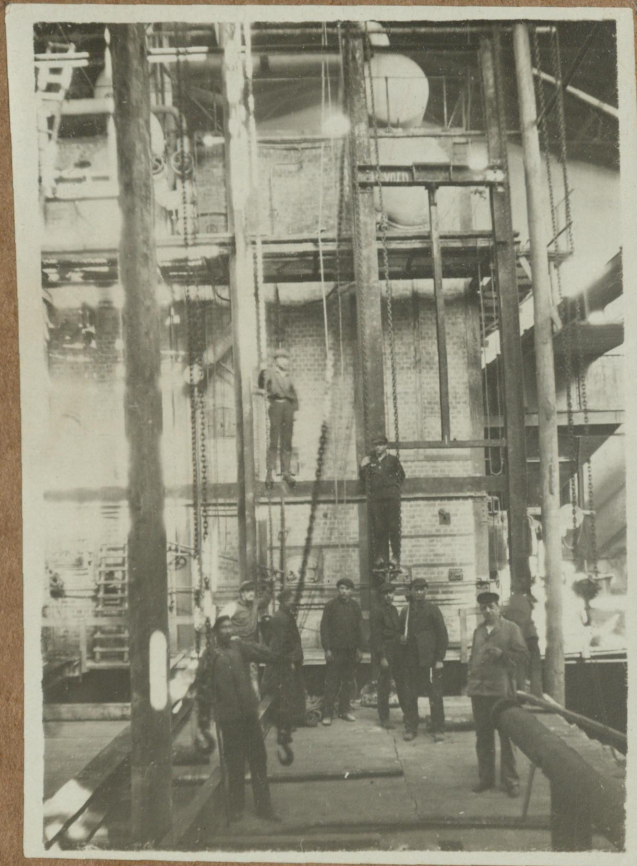




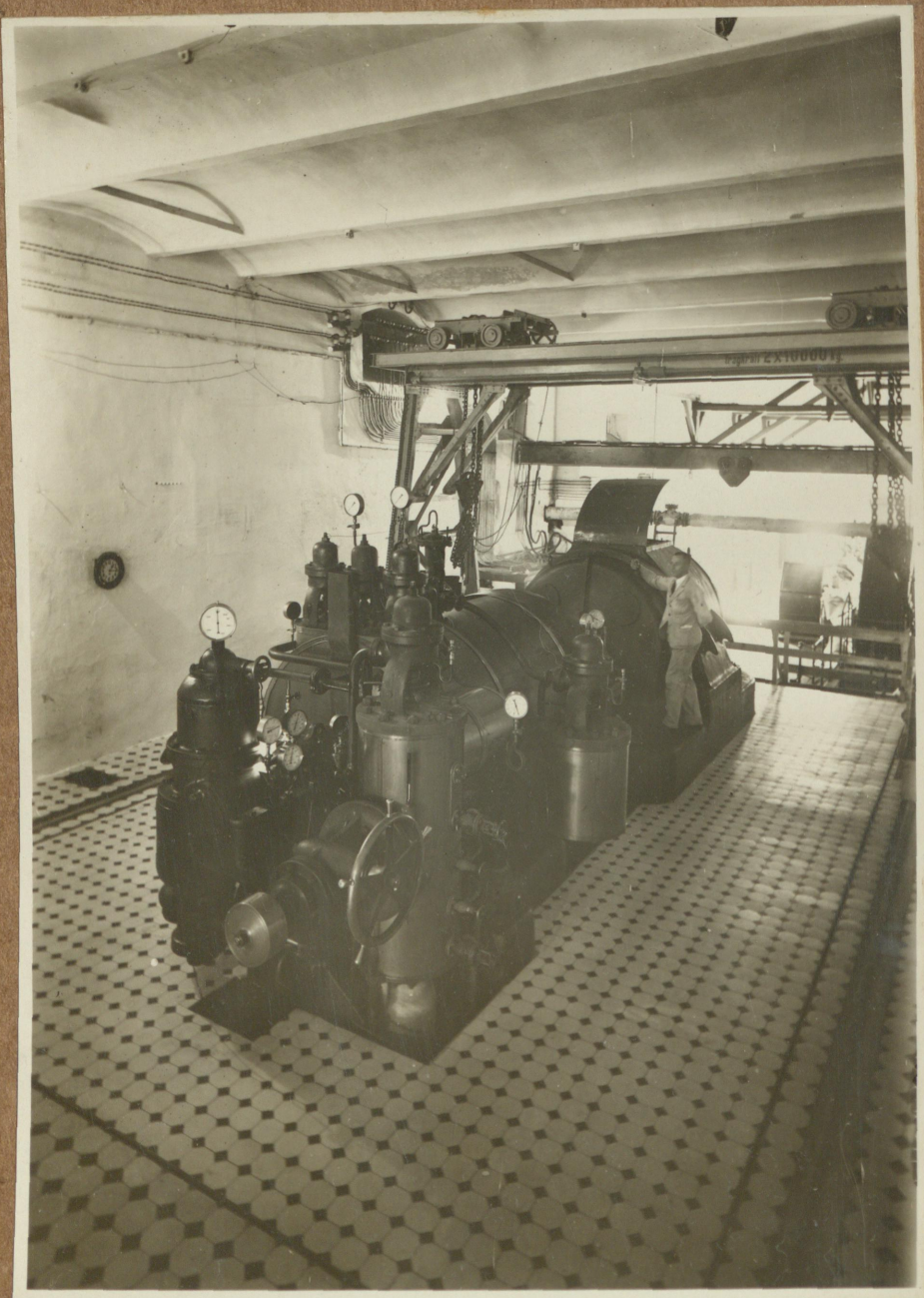
Fabrikas ūdeņa filtrācija.



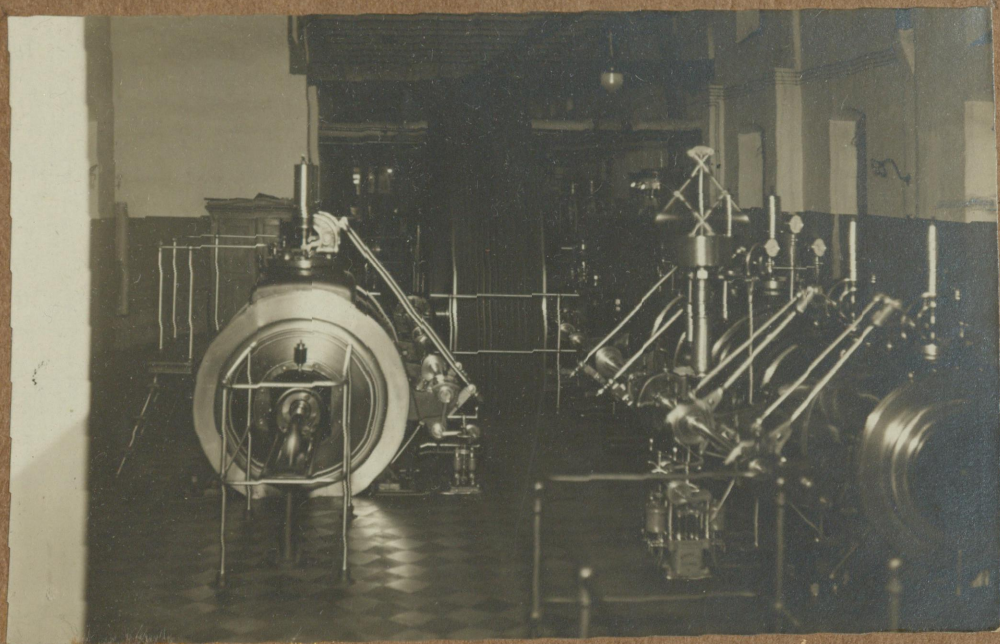
Katlu barošanas ūdeņa filtrācija.



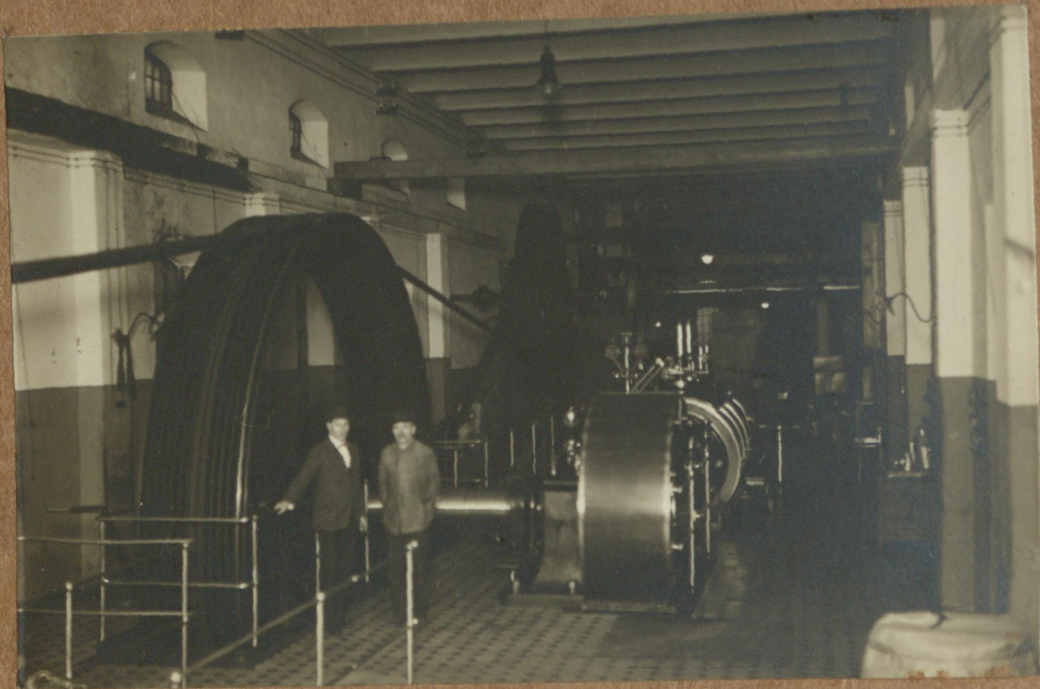
Divu ūdenscauruļu katlu ar  
600 kv.m.sildvirsmas uzbūve.



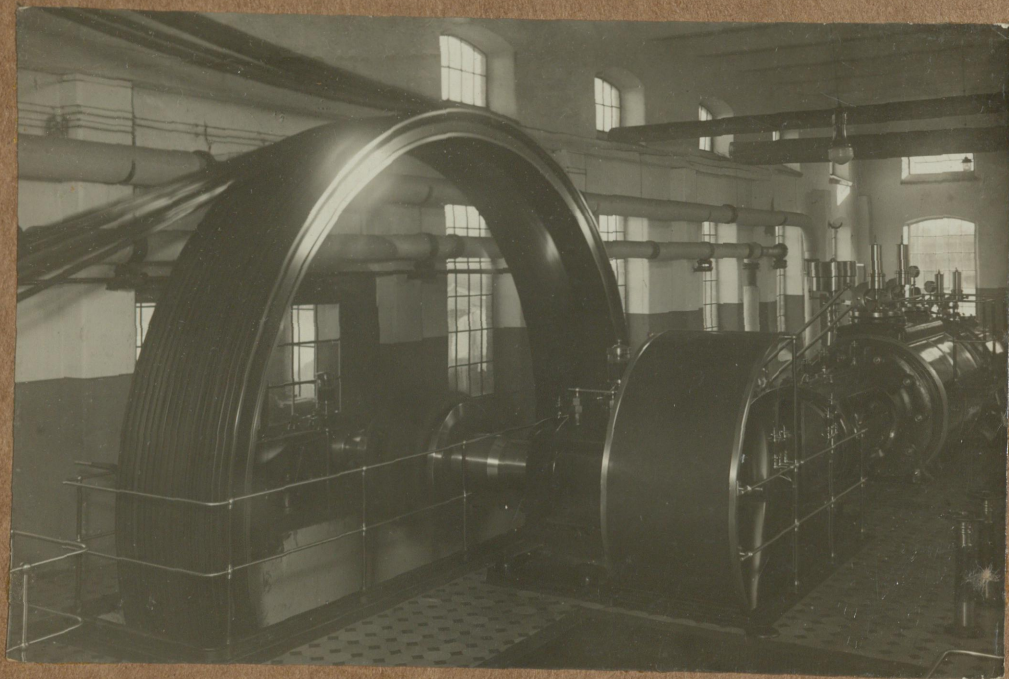
Tvaika turbine 3200 KW.



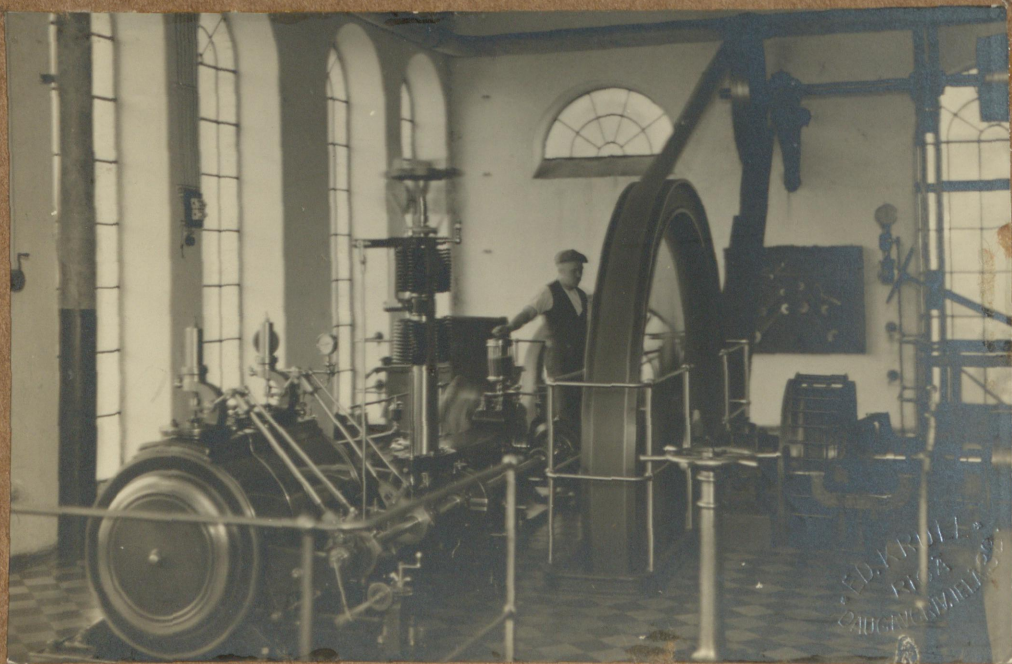
II.tvaika mašina ar 750 z.sp.



I. tvaika mašina ar 700 z.sp.

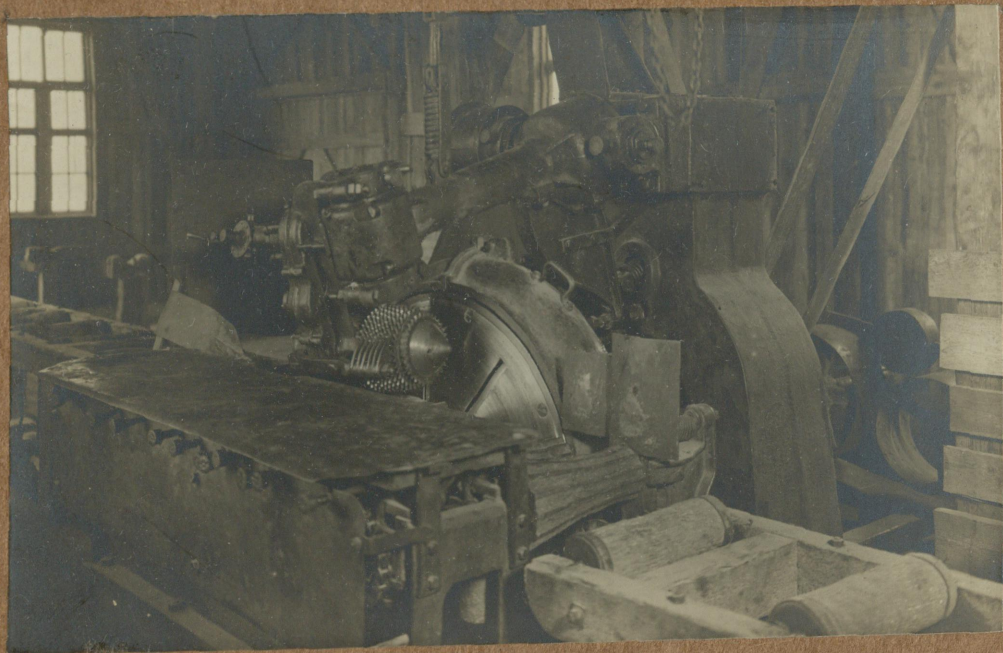


. III. tvaika mašina ar 1000 z.sp.



200 zirgu spēku tvaika mašīna.





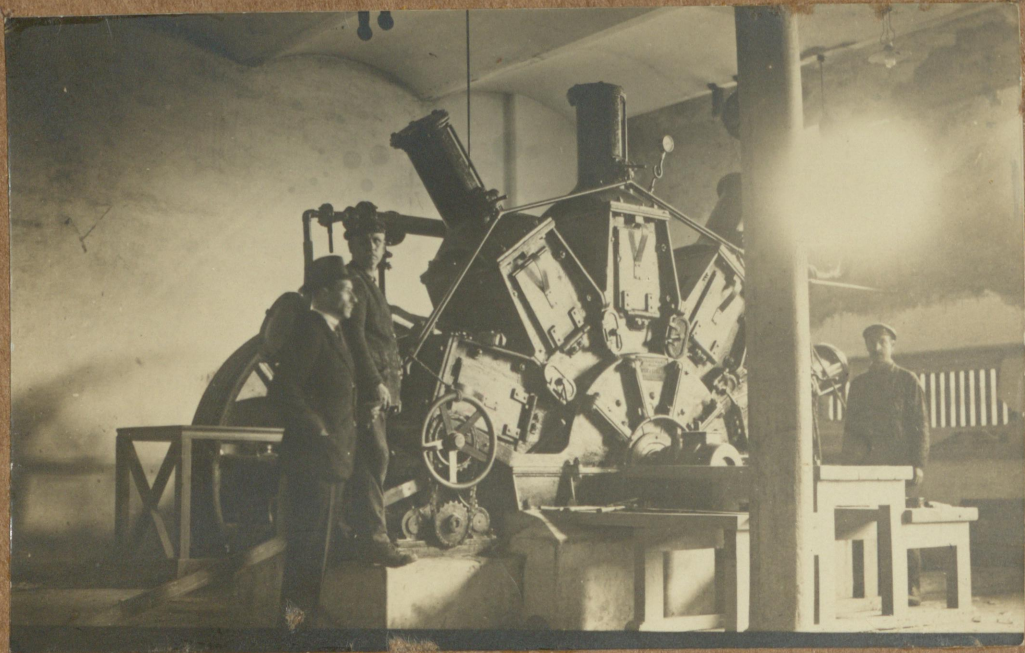
Autom.koku mizošanas mašina.



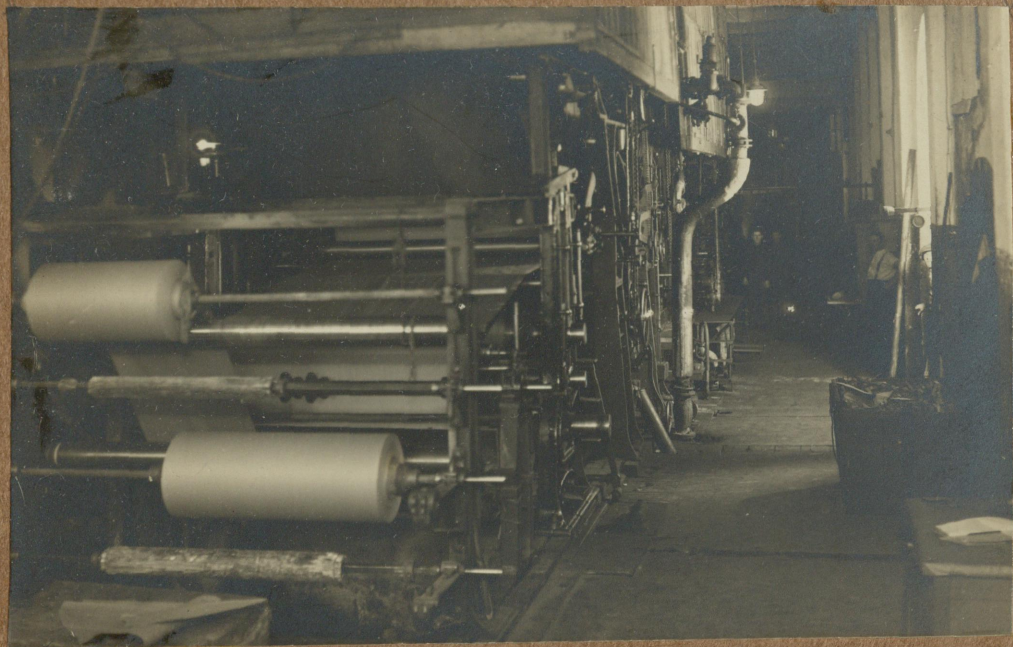
Koku kapatava.



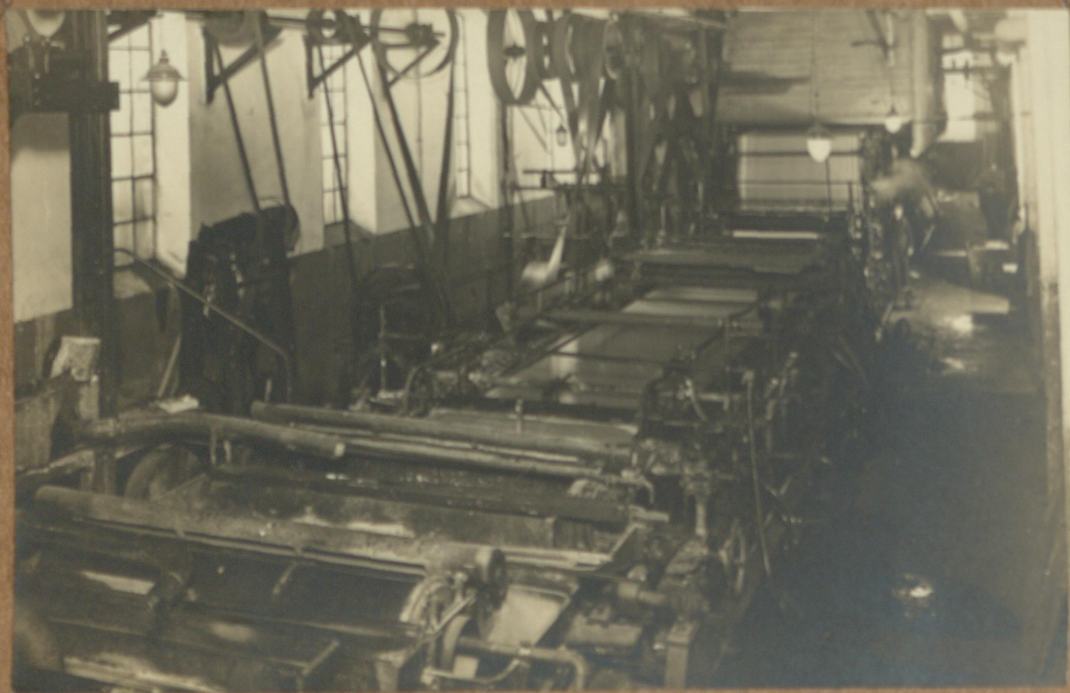
Skaidu transports.



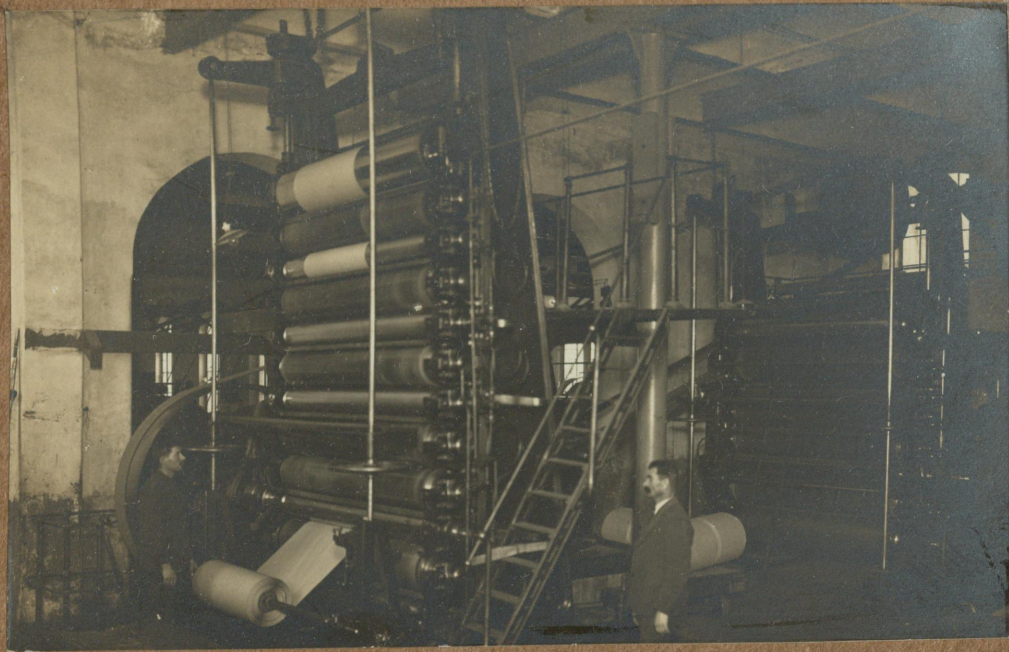
Koku slīpetava.



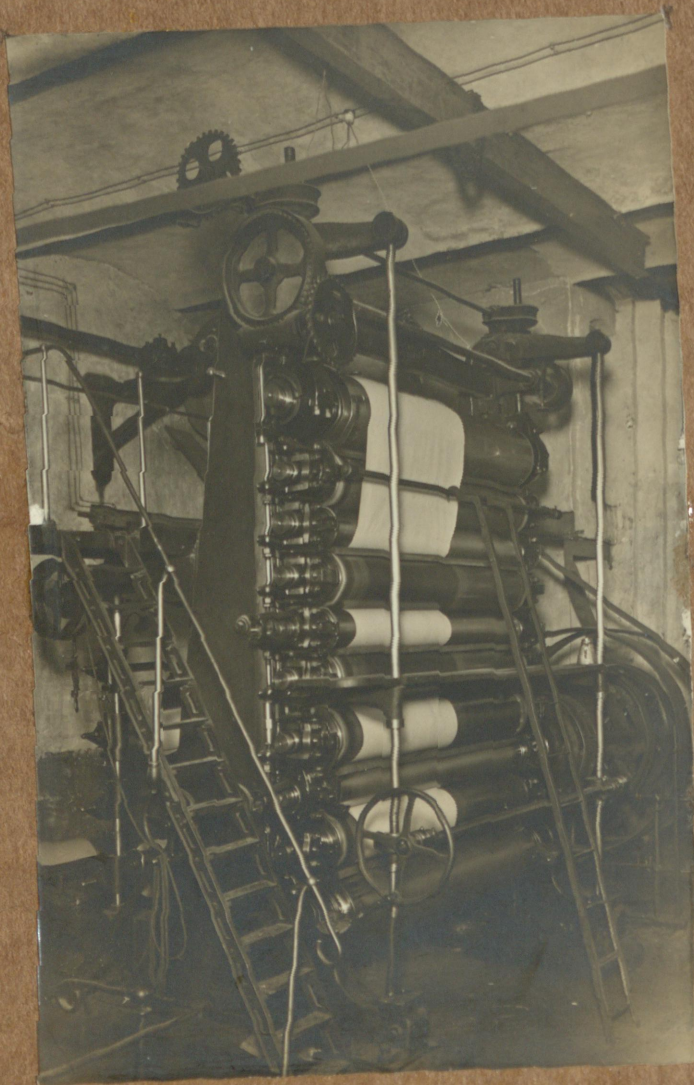
Otrà papiru mašina.



Pirmā papiru mašīna.

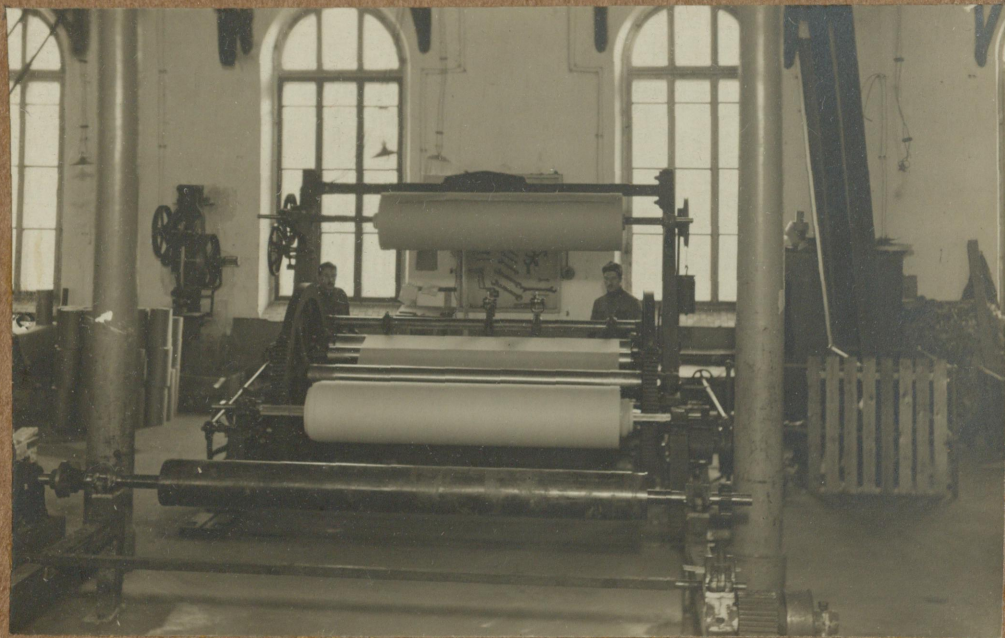


Kalanderi II & III.



Kalanders I.

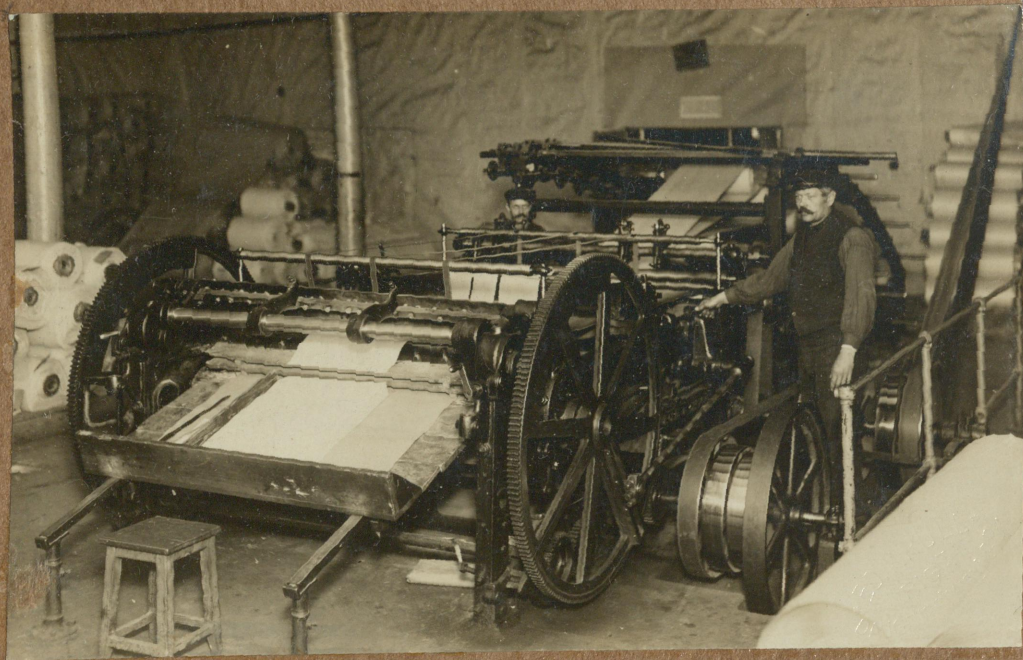




Ruļļu aparats priekš rotācijas  
iespiežamā papīra.



Rulju aparati Nr.Nr.3,4 & 5.



14

Skērsgriežama mašīna VI.



Papiru škirotava.



Papiru pakotava.