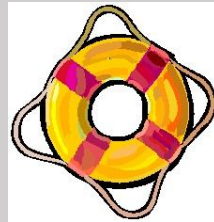


# Is it possible to standardise preparations for disaster?

*ISO 21110:2019*  
*Emergency preparedness and response*



**Anna Czajka**

Central Laboratory of Conservation of Archival Records, AGAD

2022











# 10 primary threats

- Physical forces
- Thieves and vandals
- Fire
- Water
- Pests
- Pollutants
- Light, ultraviolet and infrared
- Incorrect temperature
- Incorrect relative humidity
- Dissociation

# TYPES OF THREATS

1

Rare events – devastating effects

2

Common events - sporadic with  
intermediate severity

3

Cumulative processes

Physical forces  
Thieves and vandals  
Fire  
Water  
Dissociation

TYPES 1 AND 2



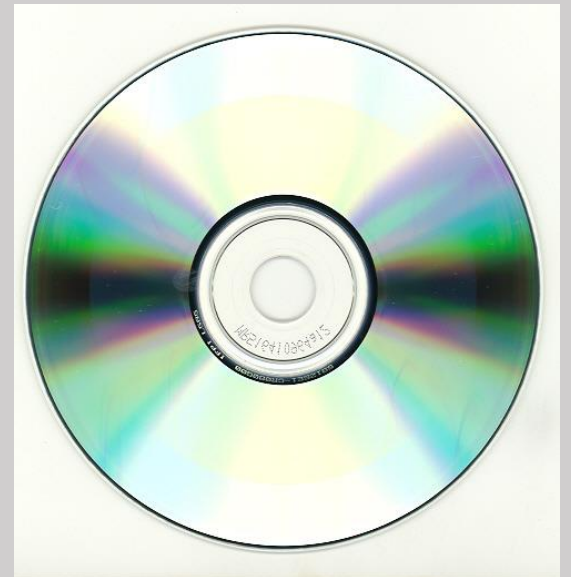
# Vulnerability



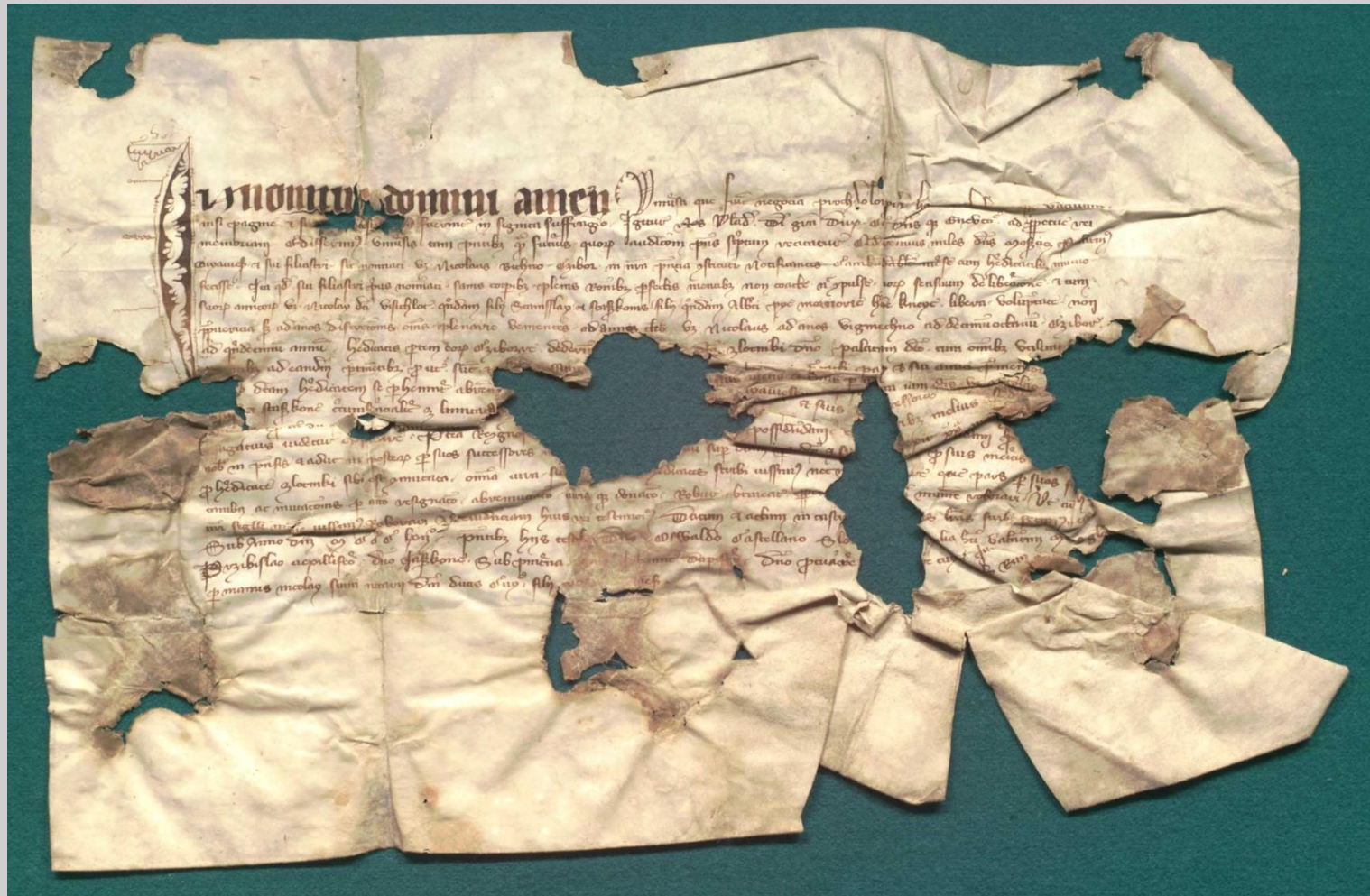
Paper



Plastic



# VALUES



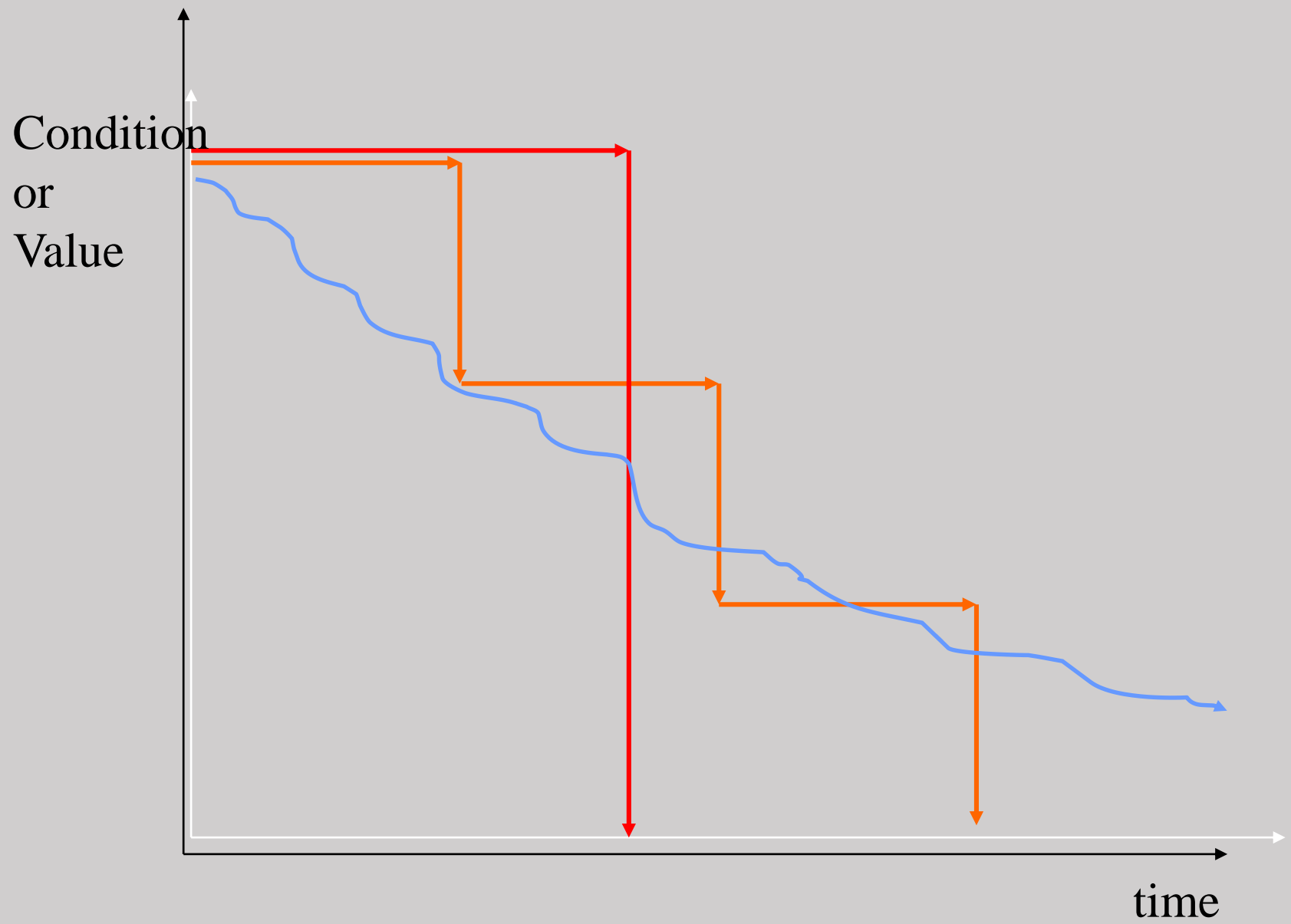
# TALKING ABOUT VALUES

**Loss in value** – maximum possible reduction of utility for known or anticipated uses...

...estimate of absolute values are not required. Only ratios of value lost.\*

- **Economic Value**
- **Informational Value**
- **Cultural Value**
- **Emotional Value**
- **Other ?**

\*Robert Waller „Cultural property risk analysis model”

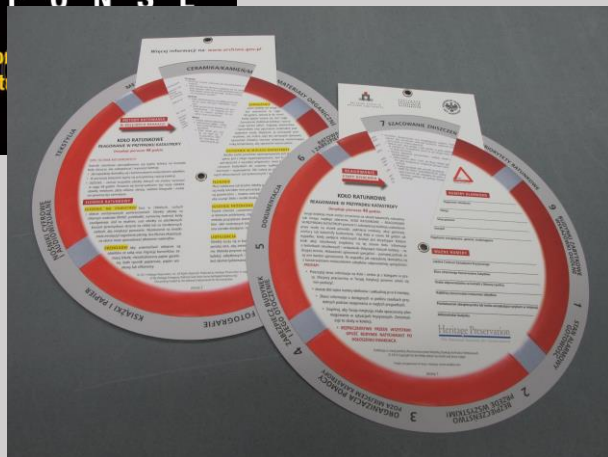
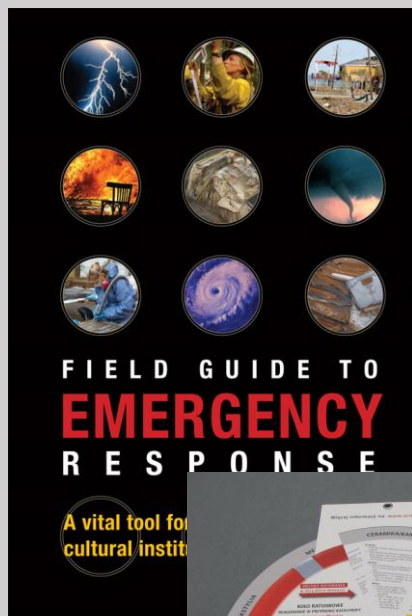




# National legislation

# International legislation

National and international guidelines and  
recommendations  
organisational guidelines



# International Standard

A document that has been developed through the consensus of experts from many countries and is approved and published by a globally recognized body. It comprises rules, guidelines, processes, or characteristics that allow users to achieve the same outcome time and time again.

Standards are an essential element of quality management and allow it to be assessed on the basis of specific indicators.

In a voluntary standardization system, a standard is a document that constitutes a recognized technical or procedural rule that reflects the current state of technical knowledge

ISO 46 Technical Committee "Information and documentation"  
Subcommittee 10 "Storage conditions and requirements for the  
preservation of collections"

## *ISO 21110:2019 - Emergency preparedness and response*

Context for emergency planning, response and corrective actions for  
any kind of archives, libraries and museum collections in relation to  
other existing plans



# FROM RISK ASSESSMENT TO RISK MANAGEMENT

## Means of control

AVOID    DETECT    PROTECT    RESPOND

## Level of control

location site – building – storage room

cbinet/shelf – enclosure

policy - procedure



# ASSESSMENT

Using judgment to combine present observation with past experience to aid the prediction of future events or to guide future action.

# PLANNING

The cycle of developing, executing and updating a plan in case of emergency situations.

- Identifying the weak points of the building/storage/
- Identifying weak points of the collection
- Assessment of potential damage or loss
- Risk analysis
- Security strategies
- Risk management and monitoring measures
- Preparation of the plan and its validation
- Publication, presentation and distribution of the plan

AVOID   DETECT   PROTECT   RESPOND

## INDICATORS

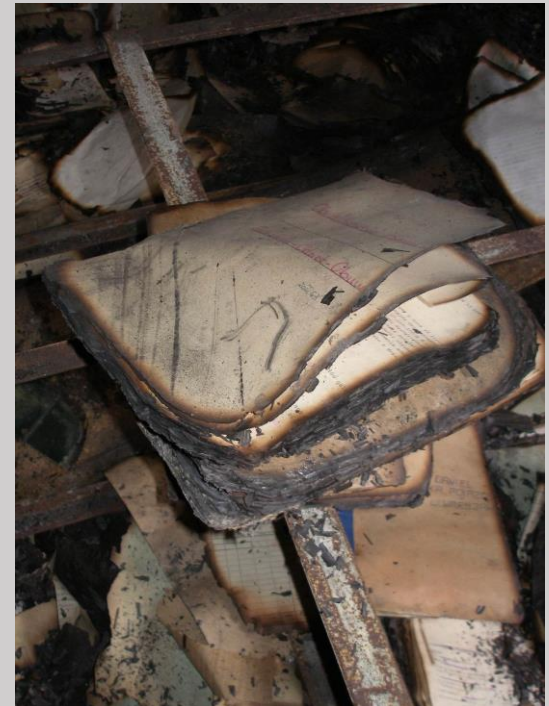
Scale for assessing the probability of threats

Scale for assessing the weak points of a building

Scale for assessing the weak points of the collection

Risk assessment scale

Scale for assessing the level of threat



# Response and remedia measures

- Principles of effective response and recovery
- Management and coordination of the response phase
- Estimating, making decisions and planning
- Working with external contractors and volunteers
- Mitigating the effects of crisis situations
- Closing an emergency operation
- Assessment of the course of events and the reaction phase





**UNESCO 2nd Memory of the World Global Policy Forum**  
Disaster Risk Reduction and Management

**EVENT DOCUMENTATION**

**PERFORMANCE INDICATORS**

**METHODOLOGY FOR EVALUATING THE  
PREPARATION LEVEL FOR CRISIS SITUATIONS**

**REFERENCE POINTS TO ASSESS THE PLAN  
IMPLEMENTATION LEVEL**



# STATE ARCHIVES

THE CENTRAL ARCHIVES  
OF HISTORICAL RECORDS

C e n t r a l n e  
L a b o r a t o r i u m  
K o n s e r w a c j i  
A r c h i w a l i ó w

[clka@agad.gov.pl](mailto:clka@agad.gov.pl)

2022