

No. 31.

Drauf. Ruon. us Atwenti.
Sohgalyr. 5, 31.

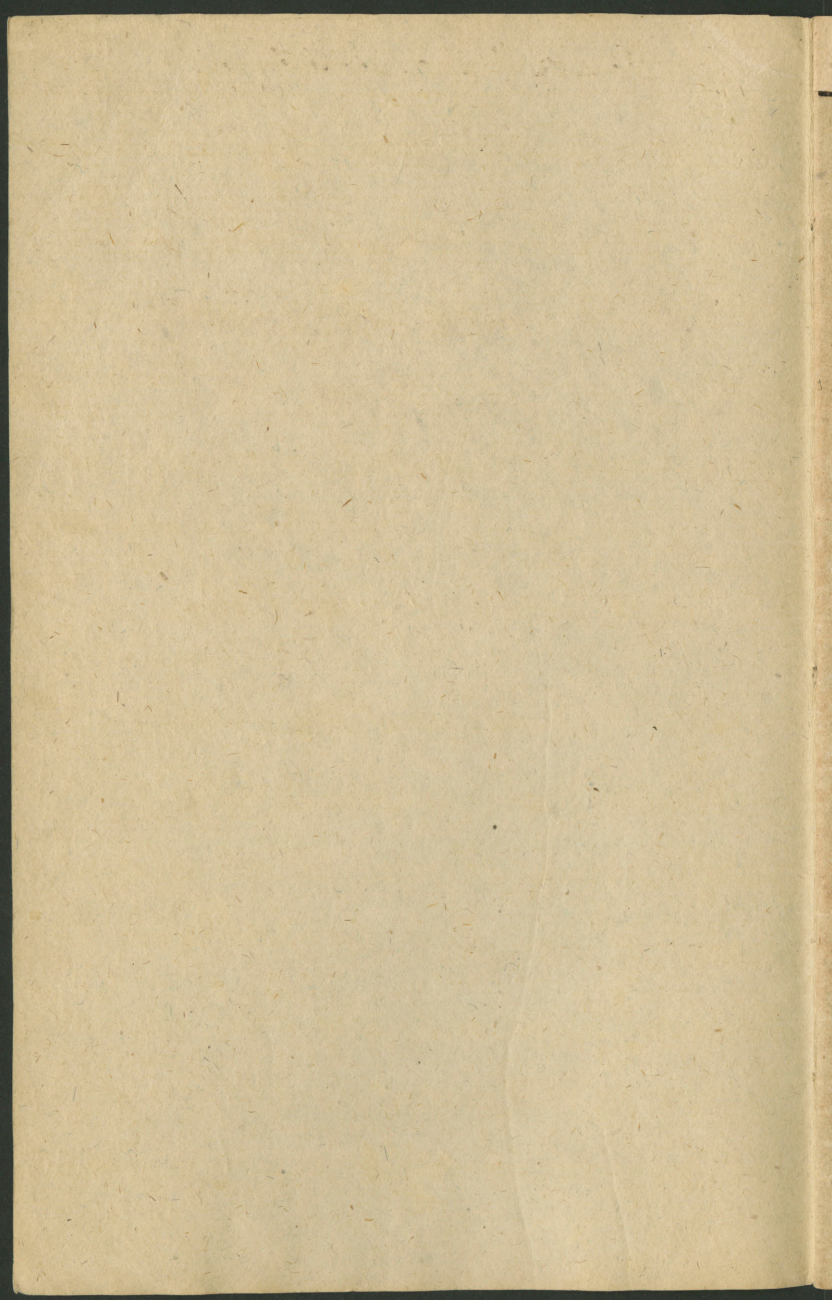
1.

2.

3.

4.

37.



Draudz. Punn. us Atwenti.

Df. Ja Schelastibas saule. I. Gr. 35, I. 1, 2, 3, 4.

Lohsinsch: Mas to Mungu mihl, lai itt,
itt ma ta saule usley, sawa Spehna.
Lohg. Gr. 5, 31.

Ja Schelastibas saule mums ley, un
spihd saule. Zaur to tee Grehyineesi
tokp Deewa Gaismas Pehni.

Mihli Brabli un Mahfas! Mums ja
brihnahs pah to Schelastibu, Mas
eesch wetras Derribas itt retti bya, pce
mums itt baggatigi itt atrohdama.

To tanni saikâ winneem wehl ta Zerriba
bya us to, Mas mums nu isdeenas itt,
Mas tur zaur Inweescheem itt sluddinahts
tappis,

tas pee mums irr notigis, Kad ta
Schehlastibas Saule, tas patefigs Gai=
schums Sasaulē irr eenahyis, no ta Laisra
tas tā sran: Sir lohti Deews to Sa=
sauli mihlejis, Ma Wensch sawu paschu
ween speedfimmuschu Dehlu irr dewis, Ma
tas gaur sawu Nopelna pilnu Zilwera=
tapschanu, gaur sawu Zeeschanu un
Mirschanu weenu muhschigu Pestischanu
un Schehlastibu mums pelnitu.

Scho Laisru sawu tee Apustubi to Gaismas
Laisru, Kurrâ teem Zilweseem fluddinachts
tappis, Ma wirri waretu no Grehseem
waha riluht, un to muhschigu Soechtibu dabluht.

Eersch scha Schehlastibas Laisra mehr
arridsan essam nahstuschi, un wirri

jaunas Derribas laudis, sewischsi mehs
schinni Semmê warram no taks leelas
Usmohdinaschanas reh^{er}eneht, sra mums
Jesus Nahwe un Zeeschana in fluddinat
tappusi, un sra tad arriofan pee mums
in peepildihts tappis: sra ta Schehla-
stibas saule sras bija uslehsrusi Pasaulē,
leelu Sulru no mums nabbageem Grehjince-
meem in darrjusi par Gaismas Behrneem.

Tas swehtais hats in to Ammatu us sewi
nehmis, in sratrai sirdi to mihsu Peltitaju
Winna Mohru un Nahwes Gihmi itt
dsihwu preevsch mahleht, itt sra srad
Wunsch preevsch muhsu Atzim buhtu
Krusta sists.

Sras to nu sanemm, tas dabu sawu

Schehlastibas Isredseschanu eesisch m.
Pestitaja Wahtim sratihit; tahds atgree-
schahs no tahs Tumsibas us Gaismu; dabba
Grehseu Seedohschanu, un Nur Grehseu See-
dohschana int, tur int Dsihwiba un Sochtiba.

Weens Mehtsis ta m. Pestitaja Nahwes
arridsan bija wernu Talsru Lauschu seu
sa-uzinaht, shas Wintu mihletu, shas
arridsan no tahs Gaismas shas wintseem
int atspihdejsi, spihdetu, sha pee teem
Zitti warretu nomanniht, no tas Pestitais
~~weens~~ no tahdeem Grehyineeseem shas
gluschi newehrtigi un samaitati int tomehr
warr darriht. Tas arridsan pee mums ta
int notigis: Mums buhs apleezinaht
shahds laipnigs un firdschehligs Kung

muhfu dahrgais Teltitais in, un skaut ween
wiffi, was pee mums pcederr pateefigi
warretu to sew apleepinaht, ^{skahds} swehtigs
Pulzinsch mehs tad buhtu. To nu naw
tas saime Murra weenam buhs behdtees
jeb isbaifotees tahs Tumsibas dehl kro
pee sew wehrâ nemm, itt kâ skad ta
Schelastibas saule ne warretu to Tumsibu
pee inweenu pahrawaht. Ar ne m. Br.
un Mahsas! Tas in gan teef kro mehs
dfeedam: Muhfu Sapraschanâ miht
Migla, Tumsiba to apritahj, skad ta saule
mums ne spihd was Pasaulé in eenah=
husi appaismohit tohs was to haismu
ne warreja redsht.

Bet paldeers Deewam schi Schelastibas

Saule Spihd mums, un irr jaw daudſ Gaddas
Spihdejusi, tadehl mums ne buhs darbotees,
ſka mehſ to dabujam redſeht, jo taſ patſ,
ſkaſ wiſſeem meeſigi Aſkeem taſ Atyis
atdarrja, taſ arndſan mums taſ Gama
Atyis warr atdarriht wahl ſchodeen, un
ſkad Winſu uſſkattam Winſa Mohſu
un Nahweſ Gihmi, ſka Winſch preeſſch
mums mohzihtſ pee Kruſta ſtabba itt
labprahtigi ſawu ſwehtu Affini irr is=
lehjis, tad irr driht wiſſa Tumſiba noht.

ſa wainiga Leeta ween irr ſchi, ſka mehſ
wiſſi to ſſaidri ſinnam, un weena Neddeſa
pehſ ohtraſ no ta tohpam pahrlcezinati, un
daudſ no mums irr ſkam Gaiſmaſ Spihdſchanaſ,

un to Gaismas Strahdaschanu ne bauda,
jeb tadehl, Na winneem ta Wahrsiba to
Gaismu nonnem, jeb Na winni to Gaismu
ne gribb, un tadehl weenu Gaddu pehy
ohtras pawadda eersich. Krehslibas, Kur
Nasits un Gaischums mihsahs, un us tahdu
Wihsi tee warr Draudses Widdu sawu
Laisku pawaddiht neswehtigi, un Na tas
eet pee Draudses, ta pat tas eet pee
Nahrtahm, jo Kamehr waitax us Dwehseles
un Meesas Samaitaschanu frattam, tameh,
ne wannam pateefigi muhsu m. Testitaja
Atnahrschanas eersich Meesas preegates,
un tad atti ne drihscht luhgt: Lai Kristus
Dwehsele swehti mannu neschrifstu

Ischuhf. raina Dwehsele; un lai Winna
Mohru = Meesa ahrste mannu giptigu
Meesas Buhdu. Mums gan buhs miham
Pestitajam par Gohdu un slawu apleeyi =
naht un faryiht, wa Winsch eerssch
Schelastibas pce mums apleeyinajahs un
muhfu Widdu itt, bet no muhsu Sufes irr
tas Truhsums, wa meh's Winnu ta ne
mihlejam un Winnam pce Herramces
ta wa tas wajadsetu.

Mehs nu eesahram atsal tahs mihas
un swehtigas Deenas Winna pasemmoda =
mas Atnahschanas eerssch Meesas, un
mums nu itt tee preeyigi un swehtigi
Seemas Swehtsi wehl preeerschâ.

Asi Haut meh's eersich wiffahm
Kahrtahm warretu leelu Pulsu sraitih
Kas Winpa sweichai Lilweyibai ne ween
gribbetu par Gohdu tapt, bet arndjan pa-
teesigi taptu; Ma isweene, no mums par
wiffu nahroschu Laisa ta buhtu:

No scheem Seemas Swehtsreem warru
es sawu pateesu. Kahrtas Swehtibu reh-
Kenecht, tad jo preeyigasru jaunu Gaddu
eersich wiffahm Kahrtahm swehtisim.

Df. Meh's Tew ar Srannu. I. Gr. 38. 1. 2. 3.

Luhgshana Zellös.

Ar d'illas Tasmimibas un Atsichshanas
tawas leelas Mihlestibas, meh's sché gullam
Garrä un Tizgibä pee tawahm Taururbtahm
Kahrtahm,

Tu muhsu m. Kungs un Pestitais, un no
Sirds tewim par to pateizam, ka Tu
weenu neisrunnajuamu leelu Schehlafibu
mums parahdijis, un muhsu nabbagu
Meesu un Affini effi peereh mis, ka Tu
weens Uppuris par muhsu Grehreem
tappis, un gaur to muhs ar Deewu effi
Salihofinajis.

Un Tu muhsu mihbais Debbesu Tehus,
kas Tu sawu mihtu weenpeedsimmuschu
Dehtu effi nodewis mums par Aglahb-
schanu un Swehtibu, effi arridsan no
mums Nabbageem Tihshlōs peeluhgt,
eersich Muhschibas flawehts unghodinahts.
Pet mehs Tewi arridsan itt sirsniigi luhdsam,

Tu gribbetu mums scho yawr tauw Scheh-
lastibu itt leclu un dahrgu darriht.

Isleij tauw Mihlestibu yawr tauw swochtu
Garru eersich muhsu Sirdim, un dohd Ma
muhsu Sirdis yawr to Auschanu tauwas
leelas Mihlestibas prett Tew itt Marstas
paleese, Ma mehs allaschin itt behrnisch-
hygi prett Tew paleesam, un weenumehr
ar Sirds= Drohschibu ar wiffahm sawahm
Behdahm un Waimanahm pee Tewim
steidsamees.

Ar m. Pestitais! Tu effi preeersch mums
Zilweess tappis, Tu effi tauw swochtu
Dsihwibu preeersch mums Nahwê nodewis
un tauw dahrgu Affini par mums islehyis,

un wehl allaschin tise daudf pree mums
datti, meh's schodeen no jauna Tew ususpou=
rejamees, un silaht luhdsam, mums to
Schehlastibu schreihroht, Ma meh's Tew par
Preehu effam un palceessam.

Apschehlojees arridsan Mungs Jesus pabr
teem daudf tuhrestosch Zilwerseem, Ma's scho
Schehlastibu wehl ne pasihft, bet eerssch
fawas Arlibas apsiahrt maldahs, un
par scho Schehlastibu ne pateiz, bet Tew
ar Grehseem wehl apbehdina. Lai arri
winneem tahs Atzis atdarritas tohp
Zaur tarou swehtu Ewangeliumu, un
weh' tohs no Schehlastibas pree sewim,
Ma arridsan winni to Spekhu tawa swehta
Nopelna warr baudiht. Mungs Jesu! darrijel

pehy tawas neisdibbinajamas leelas Schek-
lastibas wehl wairas Ma mehs luhofam
un prohtam. Amen!

Dfeed. Sabbais Gans, no Debbes nahzisz.

P. Gr. 212, 1.

