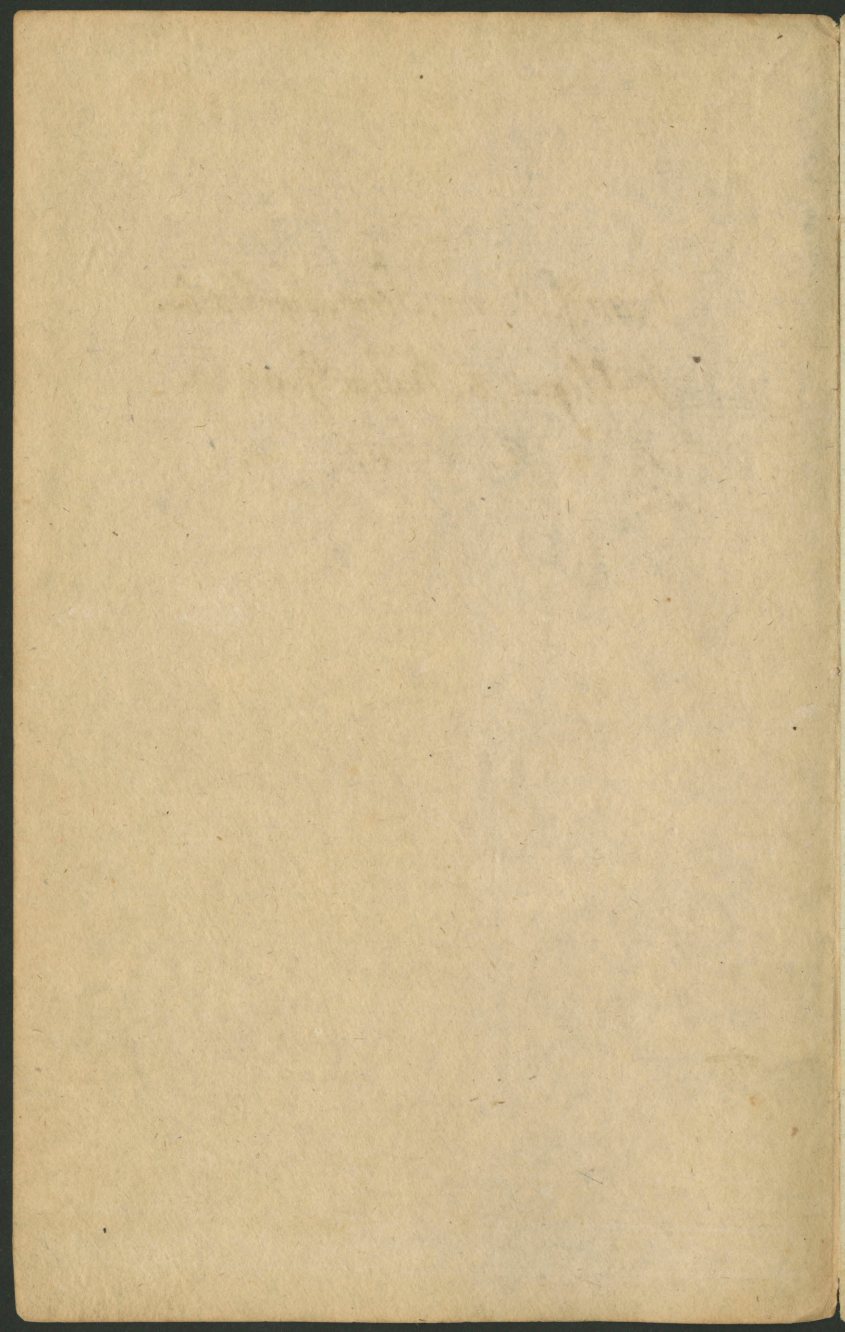


Drauf. Runn. Sem. Sweht. rös.

Wihlip. 2, 8. Dahw. Gf. 68, 29.

1.            2.            3.            4.  
54.





Dr. Runn. Scemas Swehtacōs

Iseed. Deewa Schls newahits no Pasaulēs z. P. Gr. 68.

Mihli Brahli un Mahsar! muhsu schodeenas  
Tercstā tas m. Pestitais eersch Winpa dsillhas  
Pasemmoschanas mums preersch Azim tohp,  
zelts:

Zilwexa Nahrtā atrasts, seiwi paschu irr  
pasemmojees, parlausigs tappis lihōf Nah-  
wei, lihōf tai Krusta Nahwei. Wiklip. 2, 3.

Un read mehs to leelu Lectu gruntigi apdok-  
mejam, weas muhsu mihlu Kungu un Pest-  
titaju us to irr speedusi, tad mehs ar swehtu  
Brihnoschanu isfauzam:

Aor lecla Mihlestib'ar Mihlestib'bes Mehreem  
Kas Tew weddusi us scheem Mohreu-Zelleem.

Bot muhsu Schsiussch tur pretti rahōw mums  
Winpu eersch Winpa Pa-augstinafchanas pehz  
tam read Winsch seiwi paschu tix dsilli bijaw  
pasemmojees.

Tawo Deews irr pawchlejis tawai Walstibai  
stiprai buht, stiprini ase Deews! weo Tu mums  
par labbu essi darrijis. Dahn. Df. 68, 29.

Manni m. Brahmi un Mahas! Mufsu  
mihla Psttataj dilla Pasemmoschana un  
Winnu Pa=augstinaschana us Gohda=Kireh-  
lu, allasch peederr' xohpa. To abbas Lectas,  
Winnu Krufts un Winnu Pa=augstinaschane  
us Gohda Kireflu, irr Winnu Peederrigeem  
tive patt leelas, mihlas un Preocupilnas.  
Un mehs nescad warram us Winnu doh-  
maht, bes tahs Apdohmaschanas, sca Wunsch  
pasclausigs tappis lihof tai Krufta Nahwei,  
un scas tadehl ar Gohdu un slawu irr  
Krohnehts un pa=augstinakts.

Kad mehs Winnu apdohmajam un ap-  
scattam Winnu wifs dillaxca Pasemmo-  
schana tad mehs tur xlaht preeajamees  
sca Wunsch nu muhsehigi dshwo, tadehl  
dshwo, sca Wunsch nu arridfan weenumeh,  
warr fwehtus darriht wiffus scas Winnam  
peegreeschaks un zaur Winnu pee Deewa  
nahse, un sca Winnam us to wiffa Warra  
irr dohta no ta Tehwa.



Un rad meh's Wijnfu eersch Wijnja Gohdibas  
apscattam, kas Wijnjam pehy pahryestahm  
Zeeschanahm us Gohdibas = Trehflu irraid;  
tad gan drihs ta Dohma pee ta irr rloht:  
Ase Wijnseh fuhri gruhti sewim to irr nopel-  
nijis, Wijnjam bij zaur sawu Pawlausi-  
schanu lihof Krufta Nahwei scho Gohdibu,  
scho Warru, kas Wijnjam irr dohtas, pa-  
preersch pelnitees. So tas ta bija ar muh-  
su mihla Pestitaja. Wijnjam bij ka Fil-  
wersam un muhsu Widdutajam wissu to  
zaur Teesu nopelnitees, so meh's nu zaur  
Wijnfu un no Wijnja Pilnibas no tihras  
Schehlastibas dabbujam dahwinatu.

Wijnseh sewi paschu irr pasemmojees.  
Tur eerscha gull tas leels Deewabihjascha-  
nas Noslehpums: Deews irr parahdihts Meesä.  
Kad Filwers no Seewas ofsimmis, misstams

Filwexs, un scà gaddahs arridsan nabbags  
Filwexs irr, scam wahresiga Dsihwibaw ir=  
raid, sca scad Wehrgabuhshana peedsem  
faiou Muhshu zauri nabbags pahrseh=  
lojams Wehrgs paleex, tas zittadi ne warr  
bukht, un no tahda Filwexa ne warr fax=  
zikt, sca pats effoht pasemmojees.

Bet scad tas no muhsu mihta Pestitaja  
tohp faxzichts, tad tas irr weena neisfasc=  
xama leela Leeta scas mums par sirds  
Preescw irraid. Wunsch sewi paschu irr  
pasemmojees. Tas irr taw gluschi zitta  
Leeta, scà scad arri tas wissu leelascas  
Engelis par nabbagu Jahrpipu palixtu,  
tas gan arr buktu Pasemmoshana bet  
wunsch zaur to taw ween no weenas Nahr=  
tas eexsch ohtras no Praddibahm pahrmiktu.



Bet no muhsu m. Pestilaja tosp teisets:  
Wünsch bija Deewam lihds, Wünsch bija  
tas Wahrds, un tas Wahrds bija pee  
Deewa, un Deew's bija tas Wahrds. Un  
tas Wahrds tappe Meesa. Neweens Zilwera  
Prahts scho warr aisneet un saprast.  
Scho neismehrojamu Stapsibu starp Wünnu,  
tam taifnam Deewam, tam swehtam  
Pradditajam wissu Leetu un starp weenu  
nabbeagu mirstamu Zilwera, mehs ne war-  
ram saprast. Pee ta tee Prahti mums  
skluffu paleere to apdohmajocht. Bet  
tas swehts Pradditais wissu Leetu itt  
pateesi to irr darrjis. Wünsch fewi pa-  
schu irr istuweschojees, Kalpa Gihmi  
nemdams, un tà scà zits Zilwera's tap-  
pis. Kad nu tas Apustulis scheitan

Winna dſihlu Paſemmoſchanu apraxſta,  
tað mehs tomehr tur eevſchã no muhſu  
mihla Peſtitaja Deewibas warram ſio mannikt.  
Winſch ſewi paſchu irr paſemmojees no tihras  
ſchehlaſtibas un ſirds ſpeeſchanas. Winſch  
peats ſaxſca: „Neuweens mannu Dſihwibu  
no mannim nemm, bet es to dohm u no ſewis.

Man irr Warra to doht, un man irr Warra  
to atſcal nemt. ſeho Bauſli es eſmu dab-  
bujis no manna Tehwa, prokti ſca Winna  
dſihlã Paſemmoſchanã tam bij alleſchin  
pee Winna paſcha ſtahweht, woi Winſch  
gribbeja zeeſt woi ne.

Tadehly Winſch arri ſiad Grehzineeſcu  
Prohwaſ labprahtigi nodehwahs us Pehteri  
ſaxſija: Woi tu ſchoſſeeti, ſca es warru  
taggadin mannu Tehwu luhgt, un Winſch  
man warretu dohd wairax nexa diwipadeſ-  
mits



Legionus Engelus: Bet Winnam pascham  
bij Labpraktiba us to. Wunsch sewi paschu  
irr pasemmojees. As, schis darra mums  
Winna Mihlestibu neismehrojamu leelu!  
Nexas zits Winnu speede us to ra Winna  
pahrleesu leela Mihlestiba, Winna sirs-  
niga Schofzetiba us mums nabbageem  
Zilwessem, was mehs bijam no Winna  
noxrittuschi, un Cenaioneesca Kalpo-  
schana bijam padewuschees. Bet muh-  
su Wahresiba Winnam tix hohti sahpeja  
Sirdi ra Wunsch pats isturfschojahs, ra  
Wunsch ~~tas~~ Kungs un Deews pahr wissu,  
was irr angsti teizams muhschigi, Zil-  
weses tappe ta ra mehs, ra Wunsch  
Lixcahs muhsu Meesa un Affini ee-  
gehrbtees, ra Wunsch sam ween irr ta  
Nemirftiba, tappe mirstams Zilweses.

Bet tas Winjam ne bij gan: bet Winſch  
nahze parclauſigs tapp, jeb xa ſoekts  
Apuſtuls ſaxxa: Parclauſſehanu mahytees.

Winſch, xam wiſſe Praddijumi xalpo,  
Kialpa Gihmi irr dehmeeſ. Winſch parclau-  
ſigs tappis lihof. Nahwei, lihof tai Kiruſta  
Nahioei Tiv tahli Mihleſtiba Winju Speede.  
Tadehl tas Tehwa Winju gauſchi mihleja,  
xa Winſch pats to apleexina, tadehl Winjam  
tahda ſewiſchwoiga Patuſſchana bija Winja  
Parclauſſehanas dehl.

Wiſſa Winja Dſchwoſchane: ſehè wirs  
Semmes bija weenumehrige Parclauſſehana.  
Winja Parriba bija, to Prahtu ſawa  
mihla Tehwa darriht, xas Winju bij  
ſuktijis un Winja Darbu padarriht.  
Winſch ſaxxa: Gramatâ ſtahn no



mannim raxstihks. Man irr lab's Prahts tauw  
labbe Prahtu, mans Deew's, padarriht un  
tauwa Baufliba irr mannâ. firds = Dibbinâ.  
Un Winna Paxlausischana itt fraidri bija  
redfama Winna pehdigâs gruhitâs Zeescha-  
nâs un Mohvâs. Tad Wiisch sawâ  
leelâ Zihsteschana Eljes = Kálnâ apparf-  
ta. Imagruma muhsu Paradu raudaja,  
Affins foidde, un pee Nahwes bija zaur  
sahwahn bes Mehra leelahm Dwechseles  
Mohwahn, tad tomehr Wiisch fazzija:  
Tehws, ne mans, bet tauw Prahts lai  
notewe! Tadehl tas Apustuls fawra:  
Wiisch irr parlausigs tappis lihof  
Nahwei. Tise tahli Mihlestiba Winnu  
speede. Tadehl arri tas Persiisch ap-  
muhsu Tersta fawra:  
Ax leela Mihlestib' ax Mihlestib' bes Mehrem,

Was Tew woddusi, us scheem Mohru. Zelleent  
scho wisse Wünsch irr darrijis mums nabba-  
geem Grehzineerocem sawu leelu Nihlestibu  
parahdiht.

Winnam pascham ne bija waijadfigs  
fewim no pelnitees. Wünsch warreja sawa  
Tehwa Nihlepsi dshwoht bes mums, Wünsch  
warreja to no Winna noscrittufschu Tautu,  
scad Wünsch gribbeja, isdeldeht, un zittu  
Tautu pehz sawas Pativschanas raddiht.  
Bet scho Wünsch ne gribbeja. Un scad  
muhfu Neparlausfischanaizittadi ne  
warreja tapt palihofehts, wa weenigi ween  
gaur Winna Parlausfischanu, tad Wünsch  
Labprahitigi nodewahs preerssch mums.  
Ar: mihli Prahlci un Mahsas! Krahds  
leels Priknume scad mehs to apdohmajam,  
wa tas Augstais Deews was augsti tei-  
zams



irr muhschigi Filoens tappe, wa Wüsch muk=  
Aesä un Affinî liscwahs egehrbtees.

Schinnî swehtâ Deenâ mehs itt semischrai  
peeminnam un pahr dohmajam to swehtu  
Peedsimschanu muhsu mihta Künge, un  
manna sirds Wehleschana irr: wa ut-ise=  
wa tra sirds itt gruntigi pahr to dohmatu,  
was Wüppu speede no sawa Gohdibas Krehf=  
la Pasaulê nahret tahdâ leelâ Nabbadfibâ!  
Es tizzu wa tas swehtais Gars tuhlip  
wa trai sirdi scho isfcaidrohs, tewis dehl,  
teu par labbu, tadehl wa isweenam  
Prihwiba buhtu tam Pestitojam pee=  
eit, Wüppam wissu to suhdseht was wüppam  
sirds = Sahpes darra. Tapseh Wüsch  
tappe Filoens wa Wüsch pahr muhsu  
Wahjibahn warretu eschehlotees, wa

tas sirdsfehligs taptu, un peetizigs  
Augsts Preesteris preersch Deewa, to  
Lpuschu Grehsus salihdsinaht. Wüsch  
gribbeja pats pee sewis wehrâ nemt xa  
nabbagam Filwercam pee sirds essoht,  
Wüsch tapse Filwercs tadehl, xa arri tam  
wiß leelawcam Grehzineercam Drohschiba  
buktu, tam Filwercu = tappuscham Dee-  
wam un Grehzineercu Pestitajam pee = eet,  
un xa nexahda Apdohmaschana to  
pafchu no sawa salihdsinataja nobaiditu.  
So ta Filwercs Dehlz irr nahzis merleht  
un swehtu darriht to, xaß pefuddis. Un  
to mehß arrißan itt sraüdi redsam pee  
muhßu mihça Pestitaja Pedsimschanas.  
No teem Augsteem leelem Kungam tapse  
pepreersch fluddinahts, xa tas Pestitais



esscht pcedsimmis, bet teem nabbageem  
pulgoteem Schpu Ganneem tas Engelis  
atnesse to Preecu Sijnu, fazzidams: Pcedsi,  
es juns pasluodinaju leelu Preecu, was  
wisseem Laudim notixs; So juns schodeen  
tas Pestitais ofsimmis, was irr Kristus tas  
Kungs Dahwida Pilsata. Un seho nem-  
meetes par Sijmi: juhs to Behrnu atref-  
sect Autos eelichtu, un sillé gullischi.  
Schee Ganni arri drihs bija labprahtigi  
us Betlemi eet, un fazzija sawá starpá:  
eima tad us Betlemi, rauchsiht, was tur  
notixis, sca tas Kungs lizzis mums  
Sijnu doht.

Us tahdu paschu Wihsi arri meh's gribbam  
darriht schinnis swehtás swehtscu Deenás,  
un to mihlu Jesus Behrniqiu Garrá un  
Sizzibá tixeruschhi apmercleht un poeluhgt

pee Winna Sillitees, fazzidami: Sirdsmihlais  
Pestitais! effi pateisets par tauu leelu  
Mihlestibu xas Tew speede muhsu Wahrgu-  
buhshanas dehl Pasaulé nahret, axc us zittu  
Wihsi muhsu Pestischana ne warreja notisct  
tu mihlodama Sirds, xà tise soeen zaur  
to, xà Tewim bij tise lohti pasemmotees, un  
zaur dsilhu Pasemmoschanu muhsu Augst-  
prahitibu no mums nonfemt. Axc xahdi  
nabbagi, nelaimigi un pahrscheklojami  
Zilwerci mehs buktum un palixtum, ja  
schis Brihnums pahr wisseem Brihnumeem  
ne buktu notixxis! Axc xemm par tomuh-  
su nabbagas Sirdis no mums par Pateisc-  
shanas = Uppuri, apmahjo tahs paschas  
ar tauu mihlu Tehwu un to zeeniqu Swehtu  
Garru, un dohd no Scheklestibas xca eexsch  
muhsu Sirdim nu nexas wairs Puhmi dabbu



un mahjo, kas Tewim pretti irr, zaur  
sko Tu warretu tapt aiskawehts, wiffas  
tawas fwehtigas Meera-Dohmas peemums  
pilnigi peepsildiht.

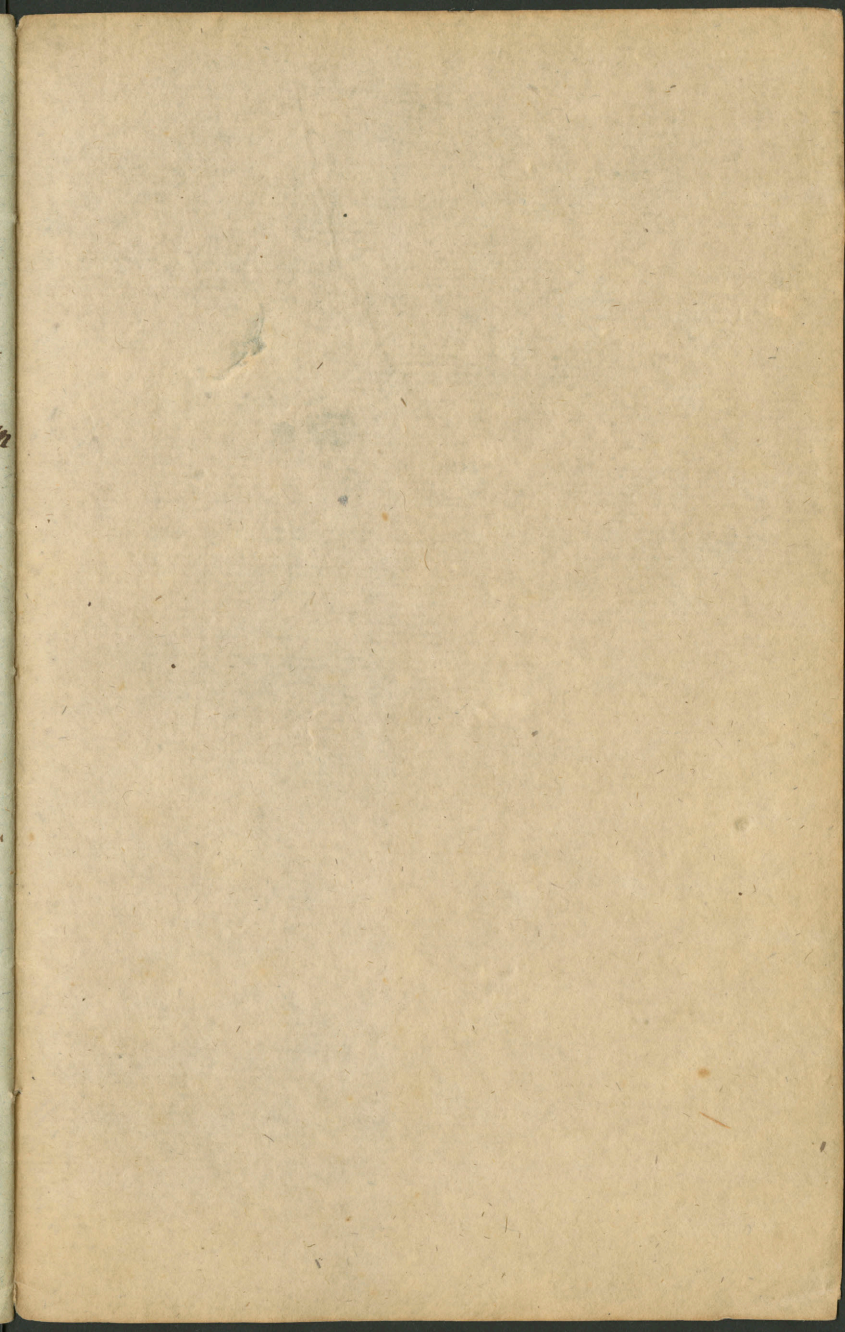
Pahrwehrosch muhsu firds-Dibbini, sca mehs  
jo deenas jo wairare Tewim lihdsigawci  
tohpam. Zaur tawou fwehtu Staigafchanu  
wirs Semmes Tu mums arriofan to effi  
nopelnijis, sca zaur tawou Scheklastibu  
staigaht warram ta sca Deewa Behrneem  
peenahrwahs, jo arri muhsu Darbeem  
buchs apleezinaht eerssch sco mehs tizzam.

Un ja muhsu grehtiga Meesa un Affins  
un muhsu wiltiga firds gribbehs muhs  
peewilt un no Tew aiskawest, are tad usnem  
muhs tawâ wiff fwehtiga Glabbafchanâ  
sca mehs ne tohpam aiskaweti, tam weeni-  
gam, tam ihstenam Mehrsam peetizzigi  
parwral dsihtes. Parclausi muhs are Schek-  
lotais!

Aze manni m. Prabli un Mahfas! Us  
tahou Wihli preezigu un swehtigu See=  
mas = Swehtreus swehtifim, tas mihlais  
Pestitais muhsu nabbagu Suhgshanu  
schehligi parclausihis, eevisch Schehlasti=  
bas pee mums apleezinafess un iseracram  
no mums par itt fewischsigu Swehtreu  
Dahwanu un Mantiv dokfess.

Geed. Sweisss, augstais Deews no Dobbes z.  
P. Gr. 37.





1. 2. 3. 4. 5. 6. 7. 8. 9. 10. 11. 12.