

Tas Latweefchu draugs.

1840. 20 Juhni.



25^{ta} lappa.

F a u n a s s i n n a s.

Is ta pilfatina Ems, Nassau's walsti Wahzsemme. (8 Juhni.)
Niswaffar tē atnahze Kreewu Keisers un Keisereene lihds ar sawu wezzaku
dehlu, sawu oheru meitu un to prinzeni Maria no Hessen-Darmstattes; tā patt arri
schahs semmes waldneeks, tas erzogs no Nassau's. Keisereene jau schodeen eeksch
teem silteem awohteeem, kas tē ar ween daschadeem sinneekem par sabbu werd,
sahze behnetees, pehz dokteru mahzibas. Lai Deews swehti!

Is Nihges. Pehrnojā gaddā us Keisera pawehleschanu tē Nihgā pirmu-
reis turreja willas tirgu, un tas tā patt pahrdewejeem, kā pirzejeem tohti irr pa-
tizis. Scho gaddu oheru reis winnu turrehs, un prohti atkal trihs deenas: 20tā,
22trā un 23schā Juhli. Wet kad nu scho reisi pee laika to fluddinajam, tad
lai nu arri semneeki no Widsemmes un Kursemmes brescht ainhalt, kam willas til
preeksch pahrdohschanas.

Lai rok labbi fargahs ikweens zilweks no sirgeem. — Eet tēweens kungs sawu
sirdsinu gannibā meelohr ar maist; nahk zits sirgs, to redsejis, winnam no pakkal un
flaudineeks winnam sakohsch waigu. — Tā pat pehrnojā gaddā notikke pee juhr-
mallas, ka semneeku sirgs masam jaunfungam, kas winnam seenus peeneffe, eekohde
wehderi.

Zitti kurpneeki muhsu pilfatā sahlf taggad suhdseht, ka winneem tē gruhti nah-
kajs deesgan labbas ahdas dabbuht, kungeem sahbakus un kurpes taisiht, kaut gan
gudru gehrmannu tē ne truhlst wis. Salka: schee laikam ne sinnoht, ka tas alkas-
uhdens, kas teem tē smilfschu kalnōs, ne mas ne deroht preeksch gehre-
schanas. Tapehz jau daschs prahrigs kurpneeks labbat' aishrauzis us semmehm, tur
few ahdas eeprkt; un iuhl' irr ar meeru. — Uhdminni, sanemmetees, un fataiseet
ahdas jo deenas jo labbakas; jo zittadi nahks zitti no sweschahm mallahm, un tad
buhš ar juhsu pelneem pa gallam!

Wahr Eehmeem, spohkeem un zitteem tahdeem baidektem.

S a r u n n a s c h a n a.

(Beidsama pufte.)

Mahz. Naudsifim nu arri, ko mehš pahr teem garreem sinnam, woi tee
zilwekam warr parahditees, woi ne? Pirmā kaherā klauhsim, ko muhsu paschu
saprashana mums par to mahza, un ko ikweens par pateesibu atsiht. — Kad
es temi behrnu-mahzibā waizaju: kas irr gars? — Ko tu tad mannim atbildeji?

Jahn. Gars irr neredfama buhſchana, tam meefas un fauli newaid, bet tam prahts un ſapraſchana irr.

Mahj. Rabbi! Mehſ Deewu noſauzam par garru, un redſam paſaulé winna warrenu ſpehku un winna leelu nezismannijamu gudribu. Muhsu dwehfele irr arri gars, winnai gan ſpehki, bet winna patte irr neredfama, tadeht to arri pee winnas ſchſirſchanas no meefahm ne warre redſeht. Neredſams irr, fo ar azzim ne warre redſeht; ka tad nu warre ſazziht: man parahdijahs gars jeb Lehms? (kas tad gan weens pats buhtu). Rà tad tu warreji redſeht to, kas ſawas buhſchanas pehz, irr neredſams? — Bet warre buht, ka ſchee garri, tahs dwehfeles to aisgahjuſchu zilweku tad, kad tee kahdam gribb rahditees, ſpehjoht few meefas peenem? Tad mums irr jawaiza: no ka tad ſchahs meefas warre buht? No ſemmes? Tas buhtu pahſmags. Wezzas bahbas gan ſtahta, ka tahds Lehms warroht zaur gaisu ſkreet, un kà migla isniht; kur tad ta meefa paleek? Woi no gaisa ſchi meefa ne warre buht? Rà tad to warretu redſeht? Jo kurſch no jums ar azzim irr redſejis wehju, kaut gan ſajuttis un dſirdejis? Ja waizajam tahtaki: kahdi tad tee garri warre buht, kas mums rahditohs? Dauds dohma: tee effoht tahs dwehfeles to nomirruſchu. Bet kurras? Woi tahs dwehfeles to labbu zilweku, kas ſcheit labbu jihniſchana jihnidamees, zerreja to debefi eemantohht, un nu tas taiſnais Deews, teem to lohni winnu tizzibas atraudams, teem kautu wehl ſchinni wahrgu ſemme apfahrt maldiht. Un kadeht? Woi lai tohs zilwekus baida? Ne, mihti draugi, tà lai mehſ ne dohmajam no ſaweem aiſmigguſcheem draugeem. Scheit wirts ſemmes dſihwodami, tee ne weenu tihtſchi apbehdinaja, un nu pehz ſawas nahwes tee ſawus ailikkuſchus brahtkus mekletu baidiht un beedeht. Ne, bet tee tur labbakòs dſihwokòs pehz gruht, ta deenasdarba to ſaldu meeru baida, fo arri mehſ ſawà laikà zerrejam panahkt. — Bet laikam to launu zilweku dwehfeles buhs tahs, kas zilwekeem parahdahs, to meeru, fo paſchas ne atrohd, arri zitteem ne wehſedamas. Mihti draugi, ſchahs, to neatgreetu zilweku dwehfeles, arri tà pat, kà tahs labbas, zaur nahmi us to weetu aiſweſtas, kur tahs no tahm labbahm atſchirtas ſawu algu dabbu, un no kurrenes tee labbi us ſcho behdupaſauli jau ne gribb atpaſkaſ greeſtees un tee launi ne warre, jo Deews, tas Kungs, teefcham ne kans, ka tee, kas ſcheit wirts ſemmes dſihwodami, ſaweem labbakeem brahteem par apgrehziibu irr bijuſchi, tohs nu wehl pehz ſawas nahwes beederu.

Dhtrà kahrtà apdohmaſim, woi jau teefcham kahds irr redſejis Lehms jeb ſpohkus? Schè gan warre atbildeht, ka daudſreis dſird runnajoht, ka ſchim un tam kahds Lehms effoht rahdijees, bet kahdi tee bij, kam parahdijahs? woi drohſchi, ſaprattigi, mahjiti wihtri? Al nè! Meſchula wezza Lihſe patti effoht redſejusi, ka leels uggunigs puhkis Kalneefcha ſkurſteni nakti eefkrehjis, ſaimneekam naudu un zittu mantu peeneſdams. Wiſſi, kam ſchi to ſtahta, mutti iſplehtuſchi bailigi klaufa, un ne weenam prahtà ne nahkt waizahkt: kas tas irr? Wiſſi jau ſinn no wezzas Lihſes, ka tas bijis Lehms. Al jums, tumſcheem lauti-neem! Ko juhs turraht par puhkeem un baidelkeem, naw zits ne kas, kà ween ſaufaini un ſehraini twaiki, kas gaisà eedeggahs un no wehja dſiht, leekahs gaisà ſkreenohht, kameht pehdigi pee ſemmes kriht un iſdſeht.

Muzzineeka Behrutkam bij no ſawa tehwa lahs naudas krahjuminiſch paliz-

zis; bet mantu=fahrigs gribbeja wehl fawu mantu wairoht. Rahdâ wakkara eenahze Tschiggans pee Behrtula, un sabbi sinnadams, ka schim naudas irr, tas eefahze kluffam us to runnaht: Eds, kahdi mulki juhs effeet! Jums laime ais durwin un ne prohteet fanemt. "Râ? kur?" fauze Behrtuls. "Zè pat ais kalna irr leels pohds ar naudu semmè eerakts." tà atbildeja Tschiggans. "Ro tu fakki?" teize Behrtuls, "woi tad to ne warr dabbuht rohkâ?" "Warr gan," atbildeja Tschiggans, "bet pats welns winnu farga un tas japeelabbina." "Rahdâ wihsè to warr padarriht?" waizaja semneeks. Nu Tschiggans tam stahstija, ka tur waijagohht melnu kalli un melnu gaili us to weetu nokaut, un ihpafchi zo spohschus dahlderus uslikt, jo zittadi welns naudas=pohdu ne dohdohht. zo dahlderi prett weffelu pohdu ar naudu irr neeka leeta! Behrtuls apfohlja wiffu, kas waijadsehs. Prett puffnakti dewehs abbi us zekku. Sedams Tschiggans pee-lohdinaja semneeku, jel ne weenu wahrdinu runnaht, jo zittadi wiffa zerriba wehjà. — Us to weetu atnahkufchi, Tschiggans ap to weetu rinkli well strihpu, pats stahjahs widdû, nokauj gaili un kalli, noseel naudu semmè un fahf kahdus swe-fschus wahrdus runnaht. Us reis nahf pats welns, melns, ar asti un abscha raggeem, is mescha, leelu nuhju rohkâ, un taifni drebbedamam Behrtulam wirfû. Schis eelsch sawahm firds=bailehm aismirkt, ka ne buhs runnaht, un isfauz: "Wai Deewin!" Uzumirkli welns to fahze neschehligi kaut, tik ko warreja is-behgt. Peekuffis, sakults un lihds nahwei isbihjees, tas pahrnahze mahjàs. Ohtrâ rihtâ gahje luhkoht, kas jel ar nabbaga Tschigganu buhs notizzis, bet ne at-radde nedf Tschigganu, nedf fawu naudu. Tschiggans, lihds ar fawu beedri, kas kâ welns bij isgehrbees, bij alsghjts; un tohs zo dahlderus lihds panemdams, preezajahs pahr Behrtula leht=tizzibu. Schis, ne gribbedams kaimineem par apfmeeklu buht, kassija galwu, fawus jaukus dahlderus peeminnoht, un zeete kluffu.

Es tew dauds kuhstohsch tahdus notiffumus warretu stahstihht, bet tà pat kâ schahs, tà arri wiffas zittas kehmu parahdischanas, ko laudis daudfina, irr tihri neeki ween. Rapeh; deenâ kehmus ne reds? Nakti, kad mehnefs spihd, wifs jau isfkattahs sawads, zilwels pats irr bailigaks, ne kâ deenâ. Mulki, zaur meschu jahjoht, balta behrse warr isbaidiht, winsch reds gaxru baltu kehmu, drebbedams steidsahs prohjam. Drohschs wihrs eet drohschi klast, un luh-ko, kas tas irr. — Pehdigi wehl japeeminn, ka wiffi tee stahsti no spohkeem un kehmu parahdischanahm zaur dauds muttehm irr gahjufchi, un weens scho, ohtrs to peelizzis. — Zè wihrs stahsta no leelahm brihnuma leetahm no kehmeem, welneem u. t. j. pr. — "Draugs, woi pats to peedsihwoji?" — Nè, mans tehws man to stahstija. "Nu, laikam tas buhs pats peedsihwojis?" — Ak ne! Deews sinn, kur winsch to irr dsirdejis. — Nu, kâ tu jel warri tizzeht, no ka tu ne mas ne sinni, kur tas notizzis, un woi tas pirmajs stahstitajs arri bij drohschs un ustizzams wihrs, jeb woi ne bij wezza, mahnu=tizziga bahba, jeb kahds bailigs gekkis, kas pats peewilts, nu ar saweem stahsteem arri zittus tahdus paschus leht=tizzigus gekkus peewilk. — Daschreis himneeki reds kehmus. Preeksch=laikôs dohmaja, ka tas effoht pateesiba, ko tee redseja; bet peh; atrad-dahs, kad zilwekam gruhcâ himmibâ affins sakahrst, tad winnam wiffadi ehmi nahf preekschâ, un ka ta ween effoht affinu waina. — Tadeht, mihtais Jahni, arri us preekschu ne tizzi stahstus no spohkeem, un kehmeem; atfihsti lihds ar

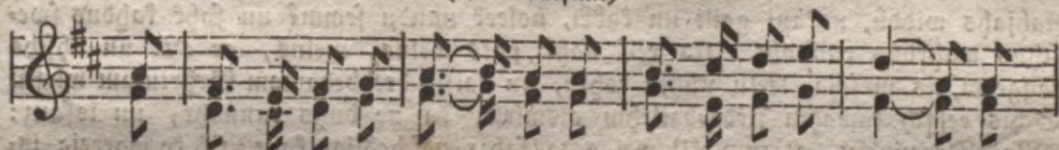
wisfeem zitteem prahtigeem zilwekem tohs par welleem; jo tu nedf patf tohs
 peedfihwojis, nedf no kahda faprahtiga zilweka dsirdejis, un kad kahdu reis' tewim
 kahds fehms rahdabs, eij' tam us mannu wahrdu drohschi wiefu, un tu redfesti,
 ka tas teefcham ne buhs fehms, bet zilweks, woi zitta kahda leeta, kas nam
 bihjama.

Zahnis. Paldeews, zeenigs mahzitajs, par mihligu pamahzifchanu; nu
 es arri Kalneefcha Anzam teefcham zerreju fskaidri parahdiht, ka winsch faue gan
 leels gudrineeks dohmadaims buht, tomehr leels nullis irr, un es no firds weh-
 leju, ka wiffi laudis juhfu mahzibas tik labba prahta un tik pateizigi peenemtu,
 fa es.

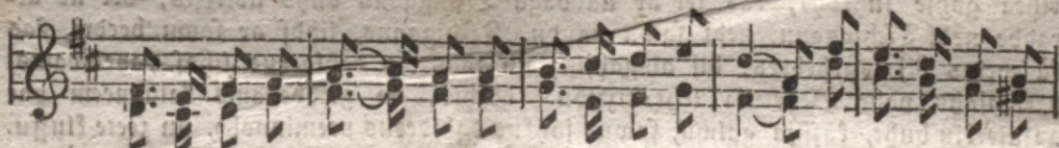
D. Et—m.

Seedu laifa.

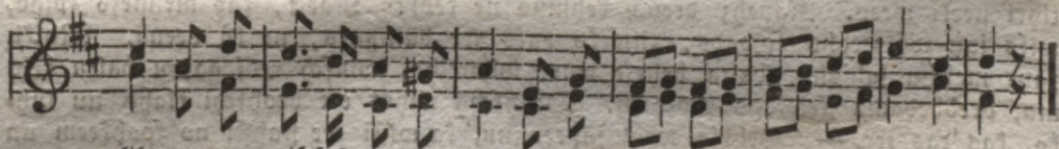
(Ue 2 balfim.)



Es scho = reis fir = di juh = tohs, fa krah-moos put = ni = ni; kab



toh-li nenmahs see = bda, tad paleef pree = zi = gi, — pa = wehni tee nu



lih-go un wis-fus meschus pil-da ar fa-wahm jau-kahm dseefmi-nahm.

2. Nu prohteet, wiffi laudis,
 Man firds irr preeziga,
 Es ne waru atkautees,
 Zadohdabs klajuma.
 Zur Deewa gohds man atspihb
 Un wianna mihlestiba
 No wiffahm ftaistahm puellitehm.

3. Man firds nu weerahs walka,
 Nihl wiffi zilweki,
 Nismirfts man irr pa gallam,
 Ka kas man pretti blif'.
 Es behdas wairs ne sinnu,
 To ween es proht' un minnu,
 Ka debbestehws man schehligs irr.
 — amc —

Elhds 19. Zuhni pee Nihges irr atnahkufchi 517 fuggi un aisbraukufchi 367.

Brihw drikkelt. No juhrmallas, gubbernemtu augstas waldischanas puffed:

Dr. C. E. Napierky.