

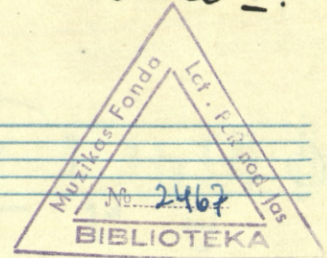
N 2007-3  
808

Latvijas Nacionālā  
BIBLIOTĒKA

plc 0307011283

Corno I.

GAISMAS GADI.

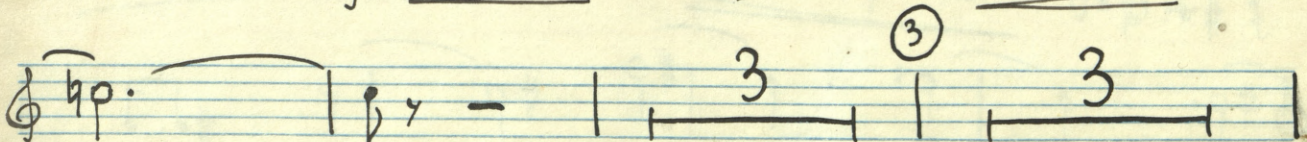
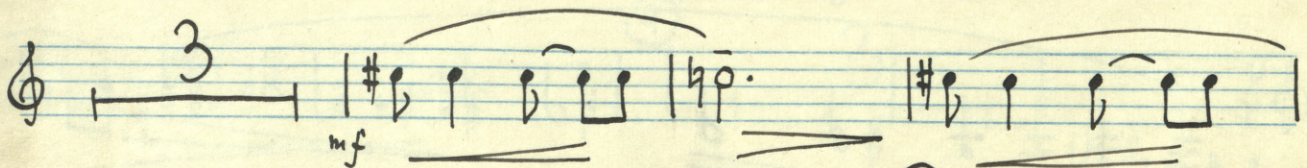
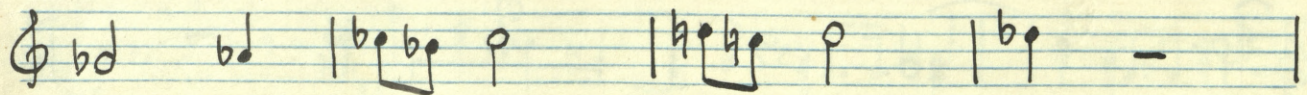
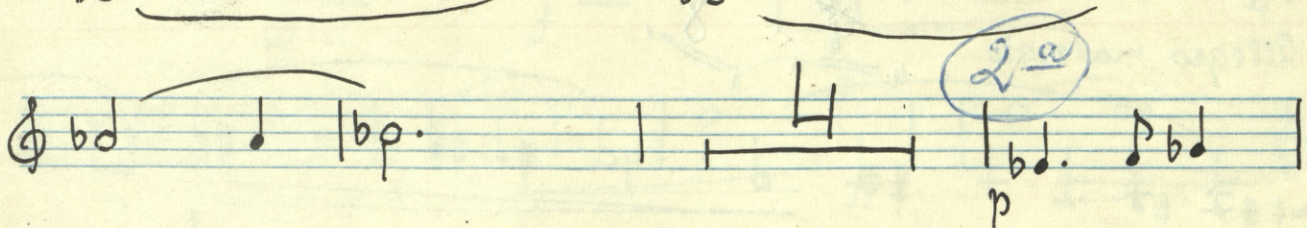
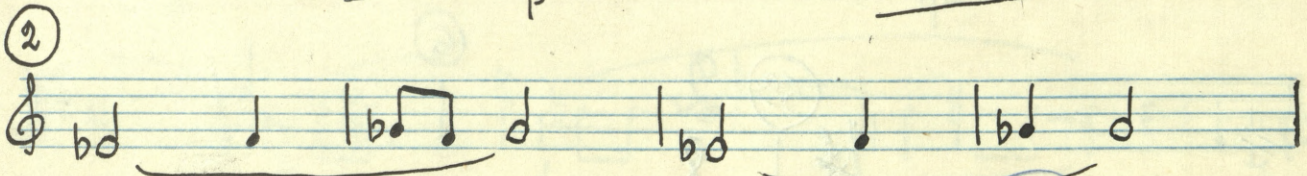
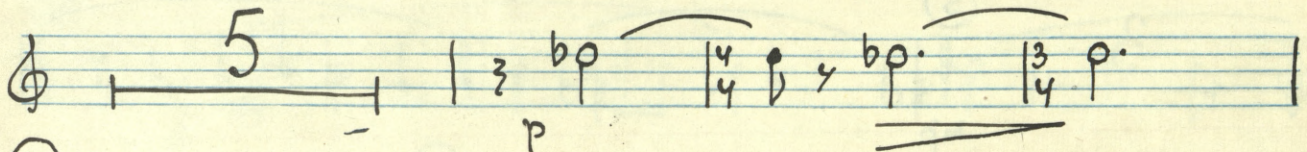
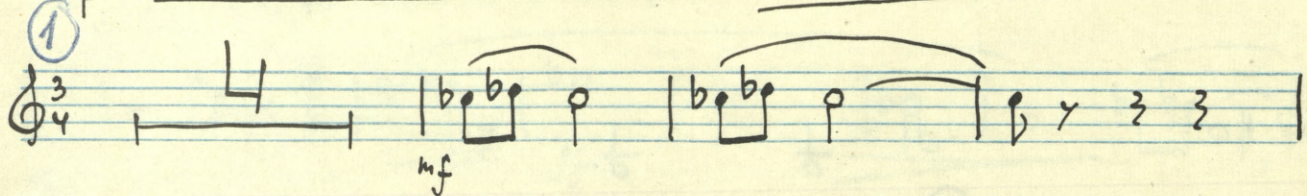
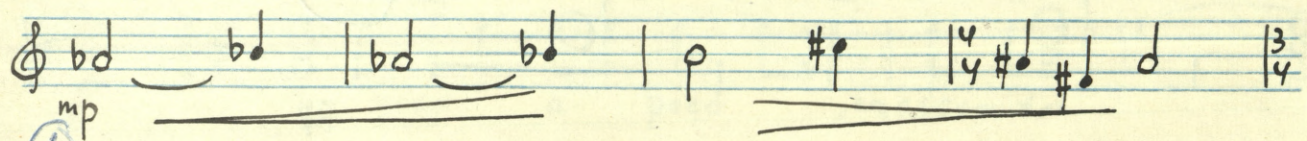
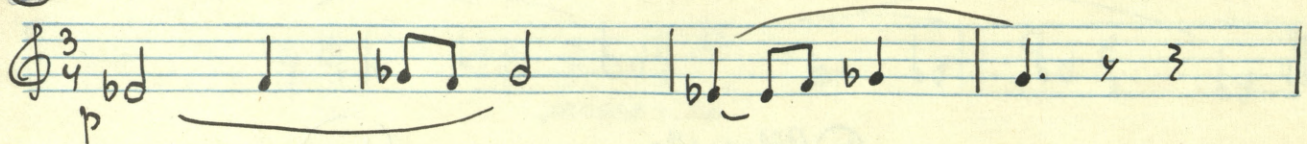


KANTĀTE.

G. RAMANS.

*Andante*  
*Andante*

Andante.



Corno I.

mf

A musical staff in treble clef with a 3/4 time signature. It contains three measures of music. The first measure has a quarter note G4. The second measure has a quarter note F#4 with a dynamic marking of *mf*. The third measure has a quarter note E4 with a dynamic marking of *pp*. A slur covers the last two measures.

3<sup>a</sup>

p

A musical staff in treble clef. It starts with a quarter rest, followed by a quarter note G4. The second measure has a quarter note F#4 with a dynamic marking of *p*. The third measure has a quarter note E4. The fourth measure has a quarter note D4. A slur covers the last two measures. A circled "3<sup>a</sup>" is written above the staff.

A musical staff in treble clef. It contains four measures of music. The first measure has a quarter note D4. The second measure has a quarter note C4. The third measure has a quarter note B3. The fourth measure has a quarter note A3 with a dynamic marking of *pp*. A slur covers the last two measures.

10

4/4

10

pp

4<sup>a</sup>

A musical staff in treble clef. It contains four measures. The first measure has a whole rest with a "10" above it. The second measure has a 4/4 time signature. The third measure has a whole rest with a "10" above it. The fourth measure has a whole note G4 with a dynamic marking of *pp*. A circled "4<sup>a</sup>" is written above the staff.

#0

A musical staff in treble clef. It contains four measures of music. The first measure has a whole note G4. The second measure has a quarter note F#4. The third measure has a quarter note E4. The fourth measure has a quarter note D4 with a dynamic marking of *pp*. A slur covers the last two measures.

3

5

mp

A musical staff in treble clef. It contains four measures of music. The first measure has a quarter note G4. The second measure has a quarter note F#4 with a dynamic marking of *mp*. The third measure has a quarter note E4. The fourth measure has a quarter note D4. A slur covers the last two measures. A circled "5" is written above the staff.

Allegro moderato.

4/4

8

2

6

A musical staff in treble clef. It contains four measures of music. The first measure has a quarter note G4. The second measure has a quarter note F#4. The third measure has a quarter note E4. The fourth measure has a quarter note D4. A slur covers the last two measures. A circled "6" is written above the staff. The tempo marking "Allegro moderato." is written below the staff.

mf

A musical staff in treble clef. It contains four measures of music. The first measure has a quarter note G4. The second measure has a quarter note F#4. The third measure has a quarter note E4. The fourth measure has a quarter note D4 with a dynamic marking of *mf*. A slur covers the last two measures.

#p.

3

2

1

1/4

A musical staff in treble clef. It contains four measures of music. The first measure has a quarter note G4. The second measure has a quarter note F#4. The third measure has a quarter note E4. The fourth measure has a quarter note D4 with a dynamic marking of *#p.*. A slur covers the last two measures.

f

A musical staff in treble clef. It contains four measures of music. The first measure has a quarter note G4. The second measure has a quarter note F#4. The third measure has a quarter note E4. The fourth measure has a quarter note D4 with a dynamic marking of *f*. A slur covers the last two measures.

#p.

mf

A musical staff in treble clef. It contains four measures of music. The first measure has a quarter note G4. The second measure has a quarter note F#4. The third measure has a quarter note E4. The fourth measure has a quarter note D4 with a dynamic marking of *#p.*. A slur covers the last two measures.



Corno I.

Handwritten musical score for Corno I, consisting of 12 staves of music. The score includes various dynamics such as *mf*, *mp*, *f*, and *ff*. It features several measures with slurs, ties, and specific fingering or articulation markings (1, 2, 3, 4, 5, 10, 11, 12). The notation includes notes, rests, and accidentals (sharps, flats) across the staves.



Corno I.

Handwritten musical notation for Corno I, measures 1-3. The first staff contains a half note, a quarter note, and a quarter rest. The second staff contains a half note, a quarter note, and a quarter note. The third staff contains a half note, a quarter note, and a quarter note. Dynamics include *mf* and *pp*.

Handwritten musical notation for Corno I, measures 4-5. The fourth staff contains a half note, a quarter note, and a quarter note. The fifth staff contains a half note, a quarter note, and a quarter note. Dynamics include *mf* and *mp*. A *rit.* marking is present above the fifth staff.

Handwritten musical notation for Corno I, measures 6-7. The sixth staff contains a half note, a quarter note, and a quarter note. The seventh staff contains a half note, a quarter note, and a quarter note. Dynamics include *f* and *mp*. A circled measure number 15 is written above the sixth staff, and a circled measure number 16 is written above the seventh staff.

Handwritten musical notation for Corno I, measures 8-9. The eighth staff contains a half note, a quarter note, and a quarter note. The ninth staff contains a half note, a quarter note, and a quarter note. Dynamics include *p* and *mf*.

Handwritten musical notation for Corno I, measures 10-11. The tenth staff contains a half note, a quarter note, and a quarter note. The eleventh staff contains a half note, a quarter note, and a quarter note. Dynamics include *mp*.

Handwritten musical notation for Corno I, measures 12-13. The twelfth staff contains a half note, a quarter note, and a quarter note. The thirteenth staff contains a half note, a quarter note, and a quarter note. Dynamics include *mp*.

Handwritten musical notation for Corno I, measures 14-15. The fourteenth staff contains a half note, a quarter note, and a quarter note. The fifteenth staff contains a half note, a quarter note, and a quarter note. Dynamics include *mp*. A circled measure number 17 is written above the fourteenth staff, and a circled measure number 16 is written above the fifteenth staff.

Handwritten musical notation for Corno I, measures 16-17. The sixteenth staff contains a half note, a quarter note, and a quarter note. The seventeenth staff contains a half note, a quarter note, and a quarter note. Dynamics include *f* and *mf*. A circled measure number 18 is written above the sixteenth staff.

Handwritten musical notation for Corno I, measures 18-19. The eighteenth staff contains a half note, a quarter note, and a quarter note. The nineteenth staff contains a half note, a quarter note, and a quarter note. Dynamics include *f* and *mf*.

