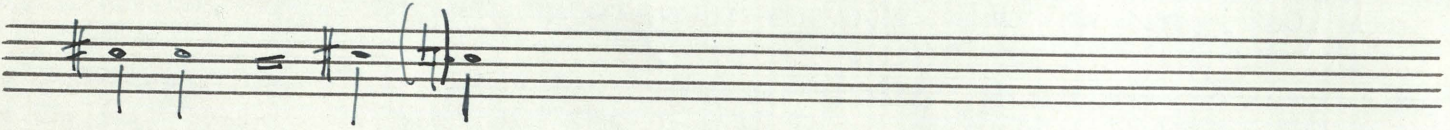
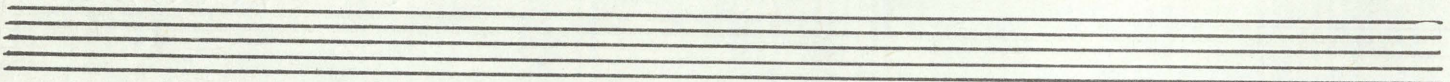
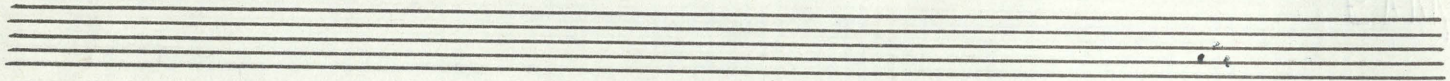


1119

P. VASKS

Muzikālais moments  
viņameta solo



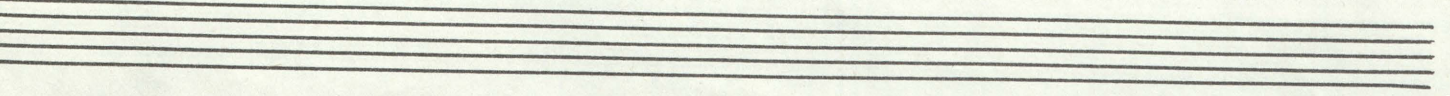
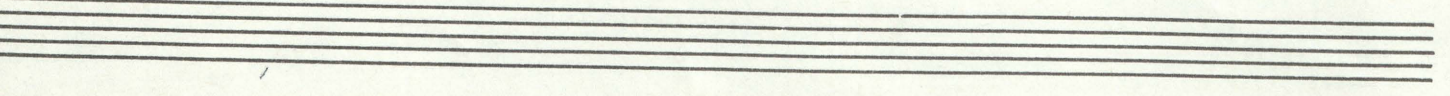
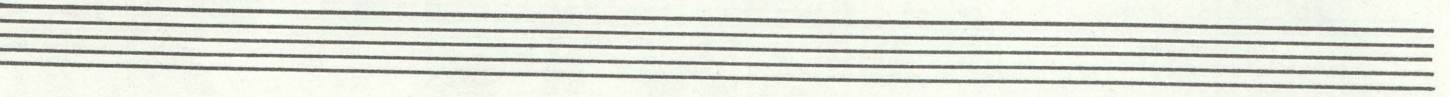
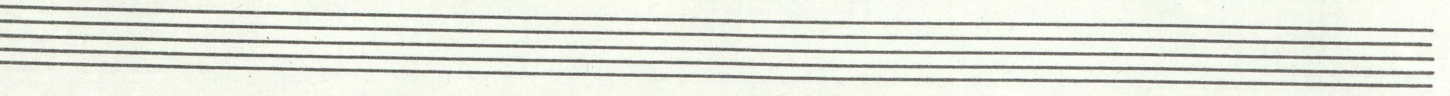
maximāli ātra  
atvērto siena

bez svāņiem, bez pūst vāļņiem

brīvi svāņi sēd  
finsētās svāņos apdv. |  
viena orientācija!

svāņos apdv. mēģinājumā  
= 1/4 +. atpūsties

maximāli ātra svāņi



Latvijas TCR  
Kultūras mantojuma  
BIBLIOTEKA

*cl in B*

*I cantilena I*

Handwritten musical notation for the first system of the cantilena. It features a treble clef and a key signature of one sharp (F#). The notation includes a dotted quarter note, a quarter note with a sharp, and a half note. There are dynamic markings 'pp' and 'p'.

Handwritten musical notation for the second system of the cantilena. It continues the melody with a quarter note, a half note, and a quarter note. Dynamic markings 'p' and 'pp' are present.

Handwritten musical notation for the third system of the cantilena. It features a treble clef and a key signature of one sharp (F#). The notation includes a quarter note, a half note, and a quarter note. Dynamic markings 'p' and 'pp' are present.

Handwritten musical notation for the fourth system of the cantilena. It features a treble clef and a key signature of one sharp (F#). The notation includes a quarter note, a half note, and a quarter note. Dynamic markings 'p' and 'pp' are present.

Handwritten musical notation for the fifth system of the cantilena. It features a treble clef and a key signature of one sharp (F#). The notation includes a quarter note, a half note, and a quarter note. Dynamic markings 'p' and 'pp' are present.

-4- II con vivacità

3  
4 *frullato*  
PP

ord ff

mp *ves - un - do* f full

ord.

Handwritten musical notation on a single staff. It begins with a treble clef and a key signature of one sharp (F#). The notation consists of a series of notes with stems, some marked with plus signs (+). A large bracket spans the first part of the staff. Below the staff, the dynamic marking **fff** is written.

Handwritten musical notation on a single staff. It starts with a treble clef and a wavy line. A double bar line is followed by the handwritten text "moment" and "„muralstura“".

Handwritten musical notation on a single staff. It begins with a treble clef and the word "muralstura" written across the staff.

Handwritten musical notation on a single staff. It features a treble clef and a series of notes with stems. The word "muralstura" is written below the staff. A triangle symbol with "2" and "4" is present.

Handwritten musical notation on a single staff. It shows a treble clef and a series of notes with stems, ending with a wavy line.

Handwritten musical notation on a single staff. It starts with a treble clef and a triangle symbol with "4" below it. The word "muralstura" is written above the staff. The staff is filled with a dense, scribbled pattern of lines. The dynamic marking **pp** is written below.

Handwritten musical notation on a single staff. It features a treble clef and a series of notes with stems. The word "muralstura" is written above the staff.

Handwritten musical notation on a single staff. It shows a treble clef and notes with stems. The word "muralstura" is written above the staff. A triangle symbol with "3" and "4" is present, along with the dynamic marking **f**.

Handwritten musical notation on a single staff. It features a treble clef and notes with stems. The word "muralstura" is written above the staff. A triangle symbol with "2" and "4" is present.

Handwritten musical notation on a single staff. It shows a treble clef and notes with stems. The word "muralstura" is written above the staff. The dynamic marking **ff** is written below.

Handwritten musical notation on a single staff. It features a treble clef and notes with stems. The dynamic marking **pp** is written below. A triangle symbol with "3" and "4" is present.

Handwritten musical notation on a single staff. It shows a treble clef and notes with stems. The dynamic marking **pppp** is written below. A triangle symbol with "5" is present. The word "ord." is written at the end of the staff.

IV

con espressione

mp

p

mp

3/4

4/4

pp

ff

pp

f

f

Handwritten musical score for three staves. The top staff begins with a treble clef, a key signature of one sharp (F#), and a common time signature (C). It contains a melodic line with a triplet of eighth notes and a dynamic marking of *p*. The middle staff has a treble clef and contains a melodic line with dynamic markings of *ff*, *mf*, and *cres-*. The bottom staff has a treble clef and contains a melodic line with dynamic markings of *ff* and *fff*. The piece concludes with a double bar line and a fermata.

V

cantata II

Handwritten musical score for a cantata, consisting of six staves. The top two staves are vocal parts with treble clefs, featuring melodic lines and dynamic markings such as *mf* and *f*. The bottom four staves are for piano accompaniment, with the left hand on the bottom two staves and the right hand on the top two. The piano part includes complex rhythmic patterns, including triplets and sixteenth notes, and dynamic markings like *pp* and *mp*. The score includes various musical notations such as slurs, ties, and accidentals.

*mf ped.*

Handwritten musical notation for the first system. The treble clef staff contains a melody in G major (one sharp, F#) with a slur over the first four measures. The bass clef staff contains a chordal accompaniment. The system ends with a fermata over a whole note chord in the bass clef.

*mp*

Handwritten musical notation for the second system. The treble clef staff contains a melody in G major (one sharp, F#) with a slur over the first six measures. The bass clef staff contains a chordal accompaniment. The system begins with a dynamic marking 'p'.