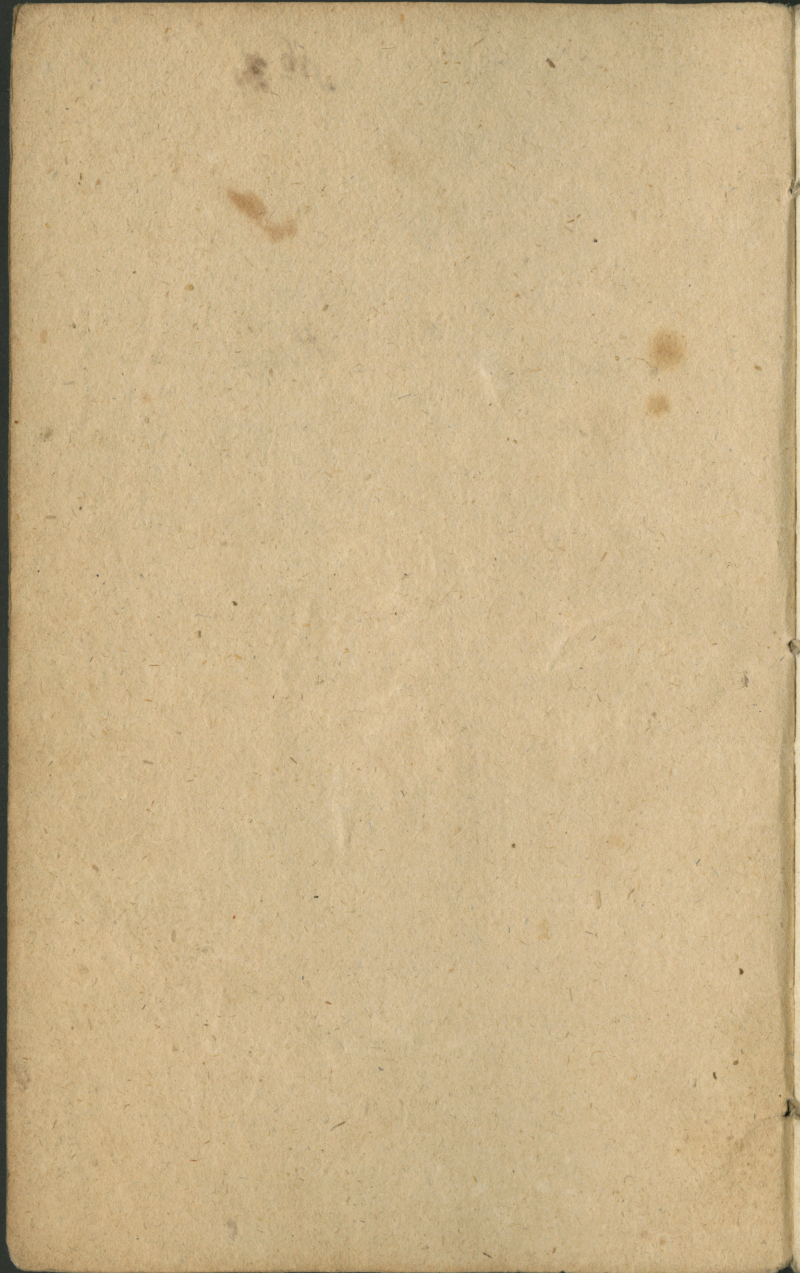


N^o 21. von Gofredus

Runn. wahr Matt. Ev. 7, 13. 14.





Dseed. Heidses, nahost per schareem Wahrteem.
P. 9. 176. 7. 4.

Terssts: E-eita gaur teem schauveem Wahr-
teem, jo tee Wahoti in platti, un tas
Zelsch in plats, was aiswedd us
Tasufchanu, un daudf in, was gaur teem
ee-eet. Un tee Wahoti in schauri, un
schours tas Zelsch, was aiswedd us
Dsihwibu, un mas in to, was to atrohd.
Matt. 7, 13. 14.

Manni. Mishi! mehs sche no paschas
Mutts tahs. Pateesibas dsirdam wa
~~was~~ ^{pat} weens Zelsch ween in, was
aiswedd us muhschigu Dsihwibu, sprohti,
tas in schours, un us scho Zellsu weeni
schauri Wahoti in.

Us tahdu Wiksi diwi jeb seschi jeb desmit
jeb tuhristosch Zells ne irr, Mas ais wedd us
Njihwibu; us tahdu Wiksi weens Lisstrums
ween irr, Mas mums usrahda, Ma meks war-
nam tappt swehti; us tahdu Wiksi tas nau wiss
tees, No tee Gudri schiks Pasauls farsma, Ma
is ratis us sawu paschu Wiksi sawu Swehtibu
warroht un buhschoht postrahdaht, tee irr Lissi
Melli ween, Mad Zilwesti, Mas us to schauru
Zellsu, No tas Testitais mums irr usrahdyis,
wehl ne irr usgahjuschi wirsu, eedohmajahs,
Ma winpi us sawu Zellsa war tappt swehti.
Zilwestiam diwi Zellsu preeischâ irraid, weens
schaurais, Mas Deewa Wahrds itt schaidri irr
aprasehts, un weens plattais Zellsch; Mas
us scho preeischraschstitu schauru Zellsu ne

staiga, tas teescham staiga us to Zelfu tahs
Tas ~~schamas~~ schamas un tahs Ellas, lai winseh irr
stas un sta winseh gribb. Dees irr tas Mungs
eesseh Debbesim, Winseh warr darriht, sto
Winseh gribb, Winseh warr Lis. numus
Zelt, stahdus Winseh gribb, Winseh warr to
Swehtibu sawis Debbesi doht, stam un sta
Winseh gribb; mehs effam Winna Praddijumi,
un pee ta Grehziinessi, mehs ne warram un ne
Drihsstam Winna Lis. numeem pretti runnaht.
Un ta irr Winna Tatsischana bijusi, teem
Grehziinessiem us Debbesi weenu paschu Zelfu
ween usrahdiht, un winneem list fazzicht:
Grehziinessi! redseet scho schawu Zelfu, scho
Zelfu jums buhs eet, stad juhs gribbat tapst
swehti; stas us stahdu zittu Zelfu atrahsi,

Tahdu es ne darru swehtu. Tä in rasflicht,
tä ta Mutte tahs muhschigas Pateefibas irr
runnajuſi, un est^{ne} darru un ne drihsſtu un arri
ne gribbu itt nesro no ta nonemt, jo tad es
taptu lihds ar jum^s no schih^s Pateefibas teeſakts.
Ar tu Pateefiba, Tu Jesus, ſias Tu ta Pateefiba
eſſi, es luhdsu ispohtsi jel wiſſas. Pildes
tahs Paſchmihlibas eerſch man un manneem
Brakheem un Mahſchm, wiſſas Eedohma-
ſchanas ar ſro meh^s warretum peewiltees,
palihdsi no Schehlaſtibas, ſia meh^s tawam
Wahrdam tiggam, un pee ſirds nemmam,
Ziſt pateefigs ſchis Liusſtums irr, no ſia Tu
nedſ ſcheitan, nedſ paſtarâ Deenâ, nedſ arri
tai ſwehtigâ Muhschibâ itt nesro ne nonemsi.

Bet manni Mihli! Mad tas ta in, mad us to
Muhshibu weens spats nolints Zelsch ween in
atrohdams, tad pee iskatra Zilwesta ta
Tautaschana buhs: Mursch tad in schis Zelsch?
un sta es to paschu waru usnahret?

Es dohmaju sta jums wisseem schis Zelsch in
sinname; bet tomek gribbu es ar Dewa
Palihgu merleht, jums to Dshiwibas Zelhu
wehl spraidrasi aprasestikt.

Muhju Terista Wahrdi, drihs no teem pphdi-
geem Wahrdeem in No Jesus us to Malnu
runnaja. Schè tas Testitais teescham wissu
gemm Nohpâ, No Wunsch Malnâ bij runnajas
un sashia: Ce-cita yaur teem schaureem
Wahrteem, staigajt us to schauru Zelhu!

Us tahdu Wihsit as schaurais Zelsch Mas
aiswedd us Dsihwibu, zits ne war buht, Ma
tas, No tas Pestitais us Malnu aprawstijis,
No meh s eesch stas 6tas un 7tas. Nodalhas
pee so. Matteusa atrohdam; un ne weens us
scho schauru Zellsu ne naher, Nam ne Mah-
rojaks, scho Mahzibu us nemt, Mas schinnis
Nodalhas irr us sihmeta; un wiffi tee us
to Zellsu tahs ~~Tasu~~ schannas staiga, pee
Ma to firdsbuhschanu ne atrohdam, No tas
Kungs 5ta Nodalha pee Matteusa aprawsti,
wiffi tee us Ellas Zellsu atrohdam, Mas ne
Dennaks schohs Lishsumus turreht.
Schinnis Nodalhas tas Kungs tohs.

Lis. stumus sawas Walstibas irr ussikmejs,
Mas schohs paschus ne tur, tas weens
Eedsihootais schaks Walstibas ne urarr
buht, Mas pehy scheem Lisistumeem ne
staiga, tam irr zits Mungs, tas Wels,
lai wunsch scho tigg jeb ne.

Es juns scho wehl spraidrasi istulroschu.
Us scho schauru Zellu tahs Bsihwibas
wissi tee atrohdahs, Mas pehy Patresibas
Garrâ nabbagi, tee ween, Nam Pehdas irr
Nam ta deewischsige Nofstamschana irr,
ween tee lehnsprahitigi, ween tee Mas isfalku-
schi, un Nam flahpst pehy Taisnibas, ween
tee Sirds' schehligi, ween tee, Mas no Deewa
Garra leeseahs wadditees schrijftu Sirdi dabbuht,

ween tee mas Meertu turr un mihlo, mas ani
Taisribas un Jesus dehl tohp eenihdeti, lam-
mati un apbehdinati, un wiffu saunu zeesch
ween tee irr us to schauru Zelfu, mas aiwedd
us Dshwibu. Pet mas labbaru Taisribu ne
merle na to Praxistu Mahyitaju un Wari-
seeru, mas sawa Praxli ne mihlo, no
wiffsch reds, mas sawam Pretti neesiam ar
Labpraxitibu pretti ne eet, namehr tas
ar wiffu wehl irr us Zelfu, mas Laulibas
Tahrshahpeis, haut ween arr Arxim irr,
un pahr tahdahn Bohmahm sawa Sindi
ne istruststahs, mas ne merle eerssch
wiffahm Lectahm pehy Pateesibas da mihl,
un wehl melloht, wehl lammaht, sawu

Tuhwasu wehl pree wilt warr, was sawu
Cenaidnee su wehl ee nihst, to paschu ne warr
mihloht un par to ne warr luhgt, — tahdi
wissi in Behrni tuh. ~~Sasu~~ schanas.

Deewa Behrni ne mesile ar saweem
Darbeem ahriigi spihdekt; Deewa Behrni
dsennahs papreessch pehz Deewa Walfstibas
un pehz wiynya Taisribas, tee sawu Sindi
ne dalla ar Deewa un Mantu; tee leese sawu
Ustiggibu un Tahaufchanu us to dsichwa
Deewa, tee arween darbojahs papreessch to
Balshi no sawus paschas. Ahs is wilset,
un tad peeluho, su tee to Srabargu no
sawu ^{wa} Brakha Ahs warr is wilset; wiynje
^{cet sawu} Gahjumu ar Spdohmaschanu weenteesigi,

tee in tas Gars takh Luhgshanas, tadehl
tee sawu Luhgshanu gaur Tee sawu schanu
un Aisluhgshanu ar Patersshanu ar
~~Patersshanu~~, Deewam sinnamu darra,
tee mihlo sawu Tuwaru Sia sewi paschu.
Predset takhs irr tas schaurais Zelfsch,
Mas ais wedd us Dsihwibu.

Nu is Mats no mums warr pahrbaudi=
tees un pats sew prassitees: woi us scho
schauru Zelfsch takh Dsihwibas atrohdohs?
Manni Mihli! mens tar wiffi gribbam
tapt swehti. Woi naw Teesa? Suh's Wihri
juh's Secwas; juh's daudfreis lehtprah=
tigi ne laulati laudis! woi naw tees,

Ma juhs wiffi gribbat tapst fwehti?
Juhs Sifstneeri, juhs. Nesksihfti, juhs
Dshraji, juhs Wiltineeri, Mas juhs pree-
Zajeetes, Mad no sawa Suwana weenu
Mapeisu warat wairan nemt ne ma
wajaga! juhs lepni Pasaules Makrigi!
manni lihds Grehineeri! woi naw tees ma
mehs wiffi gibbam tapst fwehti? Bet no
mums buhs darriht? Mad mehs few pehy
tahs Jesus Mahyibas, no ma taggad
runnajan, pahrbandamees, tad war buht
ta wiffu leclasia Dalka no mums us to
schauru Zalka tahs Dshiwibas ne staiga.
Nabbadsibas Weeta mehs daudreis bagga-
ti Garra, lepni un paschtaisni effam.

Mehs effam behidigi, bet woi mehs behdaja=
mees pahr muhsa grehneem? Ar ne! bet
pahr laingahm Lectahm. Woi mehs effam
lehnpraktigi? Woi mums' irr ta Ikhra
Dabbas Buhshana muhsa m. Pestitaja?
Woi mehs effam isfakruschi, un flahpftam
pehy Taisubas? Ar ne! wiss pehy Maises
un Dshreena, pehy Tapanles Treereem un
Lusteschannah, ^{un} pehy Naudas. Woi mehs
effam ~~sch~~scheligi, ma' arri muhsa Tshus
Dabbas' irr scheligo? Tas Pestitais sashia:
„Swehtigi irr tee Sirds schshihfti.“ Bet woi
muhsa Sirds irr Ikhra un brikwa no ne
schshihftahm Dohmahm un Lesahroschanahm?
Tas Pestitais sashia: „Swehtigi irr tee,

Was Meenu turr, un mums irr. Freestis pee
Nemeera, un merlejam. Nemeenu uszelt.
Das Pestitais fashra: „Swehtigi irr tee,
Was Taisribas dehl un mannis dehl tohp
eenihdeta, un leela Dabha no mums. Netaisri-
bas dehl tohp eenihdeta. Mad meh's wiffa
Jesus Mahyiba pahrbaudam, no Wiffch
mahyija us Nialnu, tad muhsu Gama Wahyiba
un Grehineeriba jo wairan nahk Gaisma.
Ar leelahm firds. Sahpehm man irr ja
fashra: Ma ta wiffleelassa. Dabha no
mums us to plattu Zehlu staiga, Was
aiswedd us Sasufchanu. —
Un tomehr wiffi gribbeta tappt swehti! —
No tad nu mums bulis darrikt?

Preesch wiffahm Leetahm mums buhs to
darriht, *nia meh's miham* Pestitajam un
Deewa Wahrdam *tiyam*, *nia meh's* sche
pasuddina, *nia meh's* lohstamees apparsch
Deewa warrenas. *Proh nias*, un to nopelutu
taisnu Teesu leetiam pahr mums nospreest,
nia meh's sew un sawu besdeewigu. Staiga-
schanu ne maf aibildinojam, bet tur
pretti no wiffas. *Sirds* noschehlojam; to
buh's darriht, *nia meh's* *tiyam*, *nia meh's*
pasudduschi un pasuddinati. *Laudis* effam
bes Jesu. *In* teescham *tiy* eet ween,
nia wiffi tee, *nia* ne lohstah's apparsch
Jesus Kristus *in* pasudduschi, *tise* teescham
nia ta saule pree Debbesim *in*.

As to lehti ne weens ne gribb tiggicht, ma
wiffch irr tin flirts. Mas schodeen sahr
tiggicht, ma wiffch ^{us} ~~ir~~ sawu likof schim
staigatu Zelfu, weens Behrens tahs. Pasuscha=
nas un tahs Nahwes irr, asi tas jau weenu
Sohli no ta platta us schauru Zelfu spehris
irr, tas jau stahu pee teem Wahrteem us to
schauru Djihwibas Zelfu. Jo schohs
Wahrtus sawu: Grehnu=Atsichschana,
Grehnu=Juhdjeschana, Sirds=Nahroschana
pehr Atgreeschanas, jo tas Sestitais far ma:
swehtigi irr tee, mas Garrâ nablogi, jo ta
Debbesu=Walstiba wiffchem pcederr."
swehtigi irr tee, mas juht, ma wiffchem
truhst, ar sho tee Deewa preejschâ warrehs
pafstahweht.

Asi, mas schodeen pee Klauischanas to
sinds gaurgreesdamu Jesus Wahrdu, pee
lawahm Nruktim sisdams ar to Muintenexu
Loyitu: Decus, essi man Grehyineenam schek-
lig. Mas schodeen eesaktu tizyehit, ma
wisch pasuddis Zilweser in! Tee Engeli
Debbes is preeyatohs pahr tahdu Grehyineenam.
To teescham, mas to tizy un juht, tahds
ne warrehs pee ta. Meem palinet, bet dschees
Schelastibu merleht, un pee schihs. Mer-
leschanas tas swehtais Gars winnam to
dsilhu sinds samaitaschanu, un to wissai
grehyiqu. Puhshchanu ta Zilweser ja wairas
atsilahs. dseed. Tairr gauschi leela secta. I. Gr. 142. 1. 3.
Asi, ma tad briknoja mees ma mehs unrojam

tin ilgi arli buht, un ar apfegtahm
Arzim tai pasafchanai pretti steigtees.

Tad nu ta Durchsele jo zeescharu fahre breht
pehr Schehlastibas un Apfchehlofchanas,
un tas Mungs Nias irr faggijis: "Luheseet,
tad jums taps dohts!" tas Nias faggijis:

"Nahzeet schurp per mannim wiffi, Nias juhs
behdigi un grachtindigi effat, es juhs gribbu
atweeglinahit." schis pasichstams Draugs
to Gehrineerua ne warr sewi leegtees.

Tad Wjnsch drihs tai Durchselei Meeru un
preerigu Pahauschanu us to Baggatibu
Lawa dahrga Nopelna, un winttas Isredse-
schanu eenfch Wjnsch Wahtim dahwina.
Wjnsch faserua: "Tu effi man liggis stalpoht

gaur tawcem Grehseem, tu effi man Grah-
Lumu pademijis ar tawcem Noseequmeem;
Es, es esmu tas, Nias es tawas Pahrschahp-
schanas isdeldu mannis dehl, un ne peeminnu
tawus Grehseus; ta Soddiba gulleja usmanni,
Gaur No tewim Meers nahor, un gaur
mannahm Bruhychm effi tu dseedinahts."
Swehtiga swohtiga irr ta Dwehsele, Nias
scho pahrbauda! ta jaw irr gauri gaur
teem schaureem Wahrteem, ta jaw staiga us
to schauru Zesflu Nias aiswedd us Dsihwiba.
Nu tas arri gittadi ^{irr} palizzis, nu tai Dweh-
selei irr tas jaunais Gars, ta nu tizg un
darra No Jesus pawchl, nu tai irr Luste un
Preess Sirdi, pehy Nunga Prausleem
dsihwoht, tee Prausli tai wairs ne irr por

Wastu, bet schi preegajahs, had wijsa driest
ta Punga Praktu pcepildikt. Gee ta mums
ne buhs dohmaht, sia tas Grehors nu wairs
eestsch mums ne stustetohs, bet ta weyga
Samaitaschana wehl arweenu stustesees,
bet sias mums papreesisch sia. Nahwes Sahle
bij par Strahdi, tas muhs nu isideenas
speesch peem. Pestitaja eet, Wijsam to suhdsekt.
Had ween isideenas tohpam atjaunati
eestsch ta Garra muhsu sirds Prakta, un to
deenischsu schyihstischanu no Grehoreem
ne aismirstam, tad paschi Grehori un Pretti-
ba ta hauna Garra muhs speedih's jo wairast
us Jesu Kristu, un us to, sia mehs ar Preehu
doram, no Wijsch us Malnu mahrijus; tad
mehs us to schaura Zella jo taipnarsus Sahhus
eetam;

Tad jo masari eersich few bet arriodan jo
schrihtstari paleeram, tad tohpam meh's jo
wairas us Jesu dibbinati, tad pee mums pa=
mhдах no Jesus sarsna, prohti. Mas schohs
mannus Wahodus silausa, un tohs darra, to
es lihdsinaja stahdam gudram Wihnam, mas
fawu Nammu us Arminju Malnu irustaisjis;
stad nu stipers Lectus lihje, un tahs Straumes
nahje, un tahs Wehtas puhte un peesittahs
pee ta Namma, tad tas tomeht ne apgah=
fahs, jo tas bija us Armini ustaisihts."

Ar, stahds swichtigs Zelsch! stahds swichtigs
Eesahmums, un wehl swichtigars Gals!

Stahds nahse no Spehna, eersich Spehna, no
Gaischuma eersich Gaischuma, no Tiggibas
eersich Tiggibas, no Schelastibas eersich

Scheelastibas no Lohrischanas eersich Lohri-
schanas no Pateizibas eersich Pateizibas, un
pshdigi mehs nabbagi ne effam sia Beedelneeri,
bet baggate eersich Kristus, weens Nopelns
ta Jehra ar sro Wirsch sawa Jehwa pweerschä
warr spihdeht.

Pehy mannas sirds Fahrleezinaschanas
efmu es wiffu faggiis, sias fuchtas Praxistos
no ta schaura Zella tohp faggihts, bet nu
ohtrü Nahrtä ja pmissa: Napehy scho Zellu
mas Zilweri atrohd?

Ta wifs leelasia Waina irr, Napehy tier mas no
sirds ne apnemahs to Dshiwibas Zellu usmer-
leht, sia tee Wahrti irr schauri un tas Zellsch irr schauri.
To gan warr faggiht, sia neatgresti Zilweri tohs
Wahrtus schaurarius eedohmajahs, ne sia tee irr.
So tahfar tas Zilweris irr no tahs Frewa Walstibas,

jo schauradi tam tee Wahoti isleeraks, wünsch
schreiet, sie tee tise schauri, sie ne mas ne war=
roht gaur teem tiset gauri.

Wann buht, sie wünscham wehl irr nahds greh=
zigs Preeses un Luste, eersich sie wünsch sind
gannaks, eersich sie wünsch wahrenaks, tahds tad
dohma: are! nad tewim buhs scho atstakt, to tu
ne warretu isreest un panest; nu! wehl irr sairä
gan, scho Preesu baudiht baudiht grilbaks man,
Deers Debber Kurwis schodeen ne flehgs.

Nad nu tahds nabbags no Grehsu-Absehlo=
schanas un sind-Atgreeschanas no dabba dsir=
dekt, tad tä sarsroht schauschalar wünscham us=
nahse, wünsch mesile aisbehgt tise drihs un tise
tahlu. sie ween wann. Bet tä tas naw, mihlas
Dwehseles, sie juhs schreietat! tee Wahoti ne irr
tise schauri, sie juhs schreietat; tee irr tise
platti, sie juhs wiffi warret gauri tiset,

Maat arri rahpus eetu; tas Zelsch ne irr tior
schawrs Ma juhs dohmajt, ar ne! wiffsch
irr plats deergan, pee Dshiwibas tiert.

Nahs at ween rilaktu, eefahs at ween, ap-
frettet ween tohs Wahrtus Tuurumâ, ar
tad juhs teescham to drihs gittadi atrasset,
ne Ma papreewisch juhs dohmajat; un tas,
Mas juns taggad ihsti mihsch irr, tas juns
por Preeschonu paliss; jo juhs redseet
un juttiseet, gise laimigs un swehtigs tas
irr, Mas us ta Kunga Zelsu staiga.

Bet teescham, Ma arri tee Wahti ne irr tior
schawri, Ma tee Pasauls Pehrni schseet,
tad tee tomehr ar irr schawri. Jo ar weenu
meesigu, nenoscheklodamu Sirdi, ne warr
Zaur scheem Wahrteem Zaur speestes; ar
muhju Meesas Cesrahroschanahm, ar muhju
Pasauls Prahtu, ar muhju neschsigstahm

meeſigahm Bohmahm, ar muhſu Naudas
Eſtahröſchanahm, ar muhſu Leerulibu,
ar muhſu Paſchtäſnibu un Paſchpatirſchana,
ar muhſu Lepnibu un ar muhſu paſcheem
labbeem Darbeem, ar ne! ar to mehr yaur
teem ſchaurteem Wahrteem yauri ne Leerham.
Tahdi gohdigi, rahmi un Deewabihjigi
Laudis, ſia ta leelana Dabba no mums
warr buht ſchſheetahs buht, — tahdi ne nahse
ar ſawceem labbeem Darbeem yaur teem ſchau
reem Wahrteem yauri, jo preerſch tahdu leelu
Paſſſſu labba Darbu tee irr par ſchaurteem.
Ween preerſch pateeſigeem nabbageem Grehji
neeſceem, ſchee Wahrte irr platti deews gan.
Scheem Wahrteem arri irr ta ihpaſcha Dabba,
ſia tee ne leerahs plattaori isplehſtees.

Nad mahds Wihrs nahsetu, Nam resna
Galwa buhtu no saaras Paschqudribas, un sra
swehts Lutters sasra, sawu Galwu zaur
scheem Tiggibas Wahrteem gribbetu gaurspeest,
us in ja sasra: At Draugs! schis in par
welti. Lai papreersch tawa Galwa paleese
masara, tad tu warresi gaurspeestes.

Tad gits nahse, mahds Gohda Wihrs, mas ar
to leelahs, sra no wisseem tohp geenichts. Tas
agrasi ne nahse wischâ, namchr wisschar
Sahwila sasra: „es turru wissas Leetas
Srahdi effam, tahs warren augstas. Atsich-
schanas Kristus Jesus manna. Kunga dehl.“

Preersch to wiss gohdigasru Zilwestu tas pats
Zelsch us Dschwibu in, sra preersch Laundat
ritaju mas. Maitaschanas Weetâ mirst.

Ase strahda nepanessama Mahriba ir schi.
— Dauds Dwehseles irr, mas ilgus Gaddus
darbojaks, ee=et gaur teem schaureem Wahr=
teem, un ne war, ma tas Testitais farwa:
„dauds merlehs ee=et, un ne warrehs.“

Dasch prassihis rapchy? es atbildu: wifs wai=
rars tapchy, ma tee ne gribb ma nablagi
Grehgineeri tur tiert eerscha. Tas Gars
Tahs Pateesibas pee Tilwerreem aisweenu
us to strahda, tohs us Pasemmibu west, un tohs
no wipstu pasudduschas Puhshanas
pahrlaeginant, Wipsch tohs gribb west us
to Garna Nabbadfibu, tadch. ma tee yittadi
to Deewa Walfstibu ne war eemantokt.

Schis Tilwerkam ne patih, bet labbari
pee sawas Paschtainibas pastakar, un

me. rile allasch no pastrahdaht, no Deewa
 pree. schâ warretu parahdiht, wiensch negriß
 plis. us un mails no wiffa Labbuma atrahst,
 un no ta tas naher, na wiensch tohs schaurus
 Wahrtus ne wertr atrast. Ahr swehtigs in
 tas Zilwers, was sawu Paschtaißnibu war at-
 staht, jo tas tims apgehrtts ar. Kristus
 Affins Taisnibu, tas dabbuhs Drehbes tahs
 Pestifchanas, was ne paleest weygas.

Jo, neween tee Wahrti in schauri, betari tas
 Zelsch in schaurus, un schê jaw daud in aissra-
 wejuschees, was yawr teem Wahrteem bija
 eegahjuschi, eersch sawas aktras Sereescha-
 nas, na wienni ne dabbuja to Debbes Emantofcham.
 Tas Pestitais farsna: Ne is. rants, was us
 mannim farsna: Mungs! Mungs! Debbesa-
 Walstibâ ee-ees;

bet mas mannam Sehwam Debbes' spa
Praktam darra. Dauds us mannim fay-
Zih's tanni Deenâ: Nungs! Nungs! ne
effam mehs tawâ Wahrâ nahs'ofchas
Leetas fluddinajuschi? Ne effam mehs
tawâ Wahrâ Wellus isdsinnuschi? Ne
effam mehs tawâ Wahrâ daud's warrenus
Darbus darrijuschi? Tad es us trem itt
fraidri fayyischi: Es ne esmu nesrad
juhs pasinnis; eita nohst no mannim
wiffi juhs saunadarritaji!

Manni Mihli! Schee Zilwersi no ma-
tas Testitais schè runna, ne irr wifs
Pasauls Laudis; jeb neatgrees'ti Zilwersi,
bet tee irr tahdi, mas jaw dafchu Schehlastiba
no Wipya bya baudijuschi. Sa jaw irr

Scheklafiba, mad to Pestitaju war par Mungu
sawet, jo no Dabbas to ne war, sta ween
gaur to. Swehtu garru. Sir tablu schee Laudis
jau irr nahruschi, sta us Pestitaju warreja
sazgicht: „mans Mungs! mans Deewas!“ winpi
gan irr gaur teem schaurem Wahrteem eenahru
schi. Cersich Spehosa schahs Deewa Apfraidro-
schanas winpi anti warrenus Darbus irr darrju-
schi, Wellus isdsinnuschchi, nahro schas Leetas
sluddinajuschchi, tas irr: tee irr gaur ta Garra
Pessrubbinaschanu no deewischrigahn Leetahn
runnajuschchi, un warreja no Winpa Taisribas
us weenu eespeesdamu Wiksi runnaht. Un to-
mehr tee pee teem sawejem ne peeder; Wiksch
tohs tanni leela Teefas Deena par teem sawejem
ne atfih.

Maapehy? wiitpi palis ne siluffu stahwin,
wiitpi us to schauru Zella, Ma's eersich
Deewa. Paulu tureschanas pastahw, ne
irr pohnm staigajuschi, wiitpi ar to pirnu
Schehlastibu palis ne Meerã. Maapehy wiit-
pi ar to apmeerinajahs? Teem tã selahjabs
Ma tam Pisrapam eersich Laõdisheäs.
Wiitpi dohmaja Ma effohti baggati, un Ma
Teem ne Ma's ne waijaga, un ne finnaja,
Ma tee bija behdigi un no schehlojami, un
nabbagi, un arili, un staili. Tadehl Ma
warreja warrenus Barbas darriht, pa-
lis ne tee lepni, un jaw turejahs par
fochteem Laudim. Tã warr buht, Ma lab-
bi eersahse, un breesmigu Gallu nemm, un
warr ti's tahlu eet, Ma sawu leelu siakhi un
Pasufchana

waars ne mas ne atsihst, un tomehr schreiet
preesch ta sohga uggunninahn Atzim
pastahweht. Atz breesmiga Atsiliba!

Manni Mihli! Tas itt ne sio ne palihds,
Kad no mihla Teflita ja labbi wotram run=
naht; tas ne sio ne palihds, Kad mums irr
labba Atsichana; tas ne sio ne palihds,
Kad meh's Jesus Wahrda warrenus Darbus
dartram; un arri tas mums ne palihds, Kad
Kriistiga Lauschu Wahrdu neffam, — jo Deew's
ne rauga us ahniga Gihmi. Kad meh's Wiffa
Paulus ne turram, tad Wiffsch muh's no=
fahdih's un fagghih's: eita nohst no mannim
wiffi juh's Laundarriteji!

Kitta Atsraweschana, gaur sio daud's no
ta Zella tah's Dsihwibas atpasorial paleese,
in ta,

Nia tas Zelsch in plats, mas aiswedd us
Pasuschanu. Preeisch Meesas tas gan
derrigs Zelsch irr; us to warr bes Bekdahm
wiffu nemt lihdsu; ta Brediba no tur at,
rokd, am i irr preeziga un lustiga. Un tee
paschi nabbagi dokma, nia winni us to
ihstenu Zelku staiga.

Manni Mihli! No juhs gribbat sewim
iswehletees? Woi juhs gribbat to muhschig,
Nahwi wehletees, jeb. nia mohdriqi Uswar=
retaji, nia Deewa Zelkastaiगतaji
Dsihwoschanâ ee=eet? Es dokmajun un
gerreju. nia wiffi to pehdiqu wehlesee.
Tad gribbam nu taifitees, juhs lihds schim
Neatgreeti, un pee Tehwa eet, ta nia tas
pasuoddis Dehls. Pet juhs, mas juhs jaw
effat eefahruschi, us to Zelku tahs

Dſihwibas ſtaigakt, luhorojeet, ſia juhs
ſiluffu ne ſtahwat, jeb atpaſſial eijat,
ſia ~~sums~~ neweens juhsu Dſihwibas=
Krohni ne atnemm, ſias jams bija
nodohmahts. Amen.

Dſ. Nam Grehtu Seedohſchana irr.
I. Gr. 234.

